

CiF Lab Solutions APEX-air HP Fume Hood

▶ Product Data Sheet



SAFETY: Lower Sash Handle is designed to be aerodynamic, eliminating turbulence as air enters the hood.

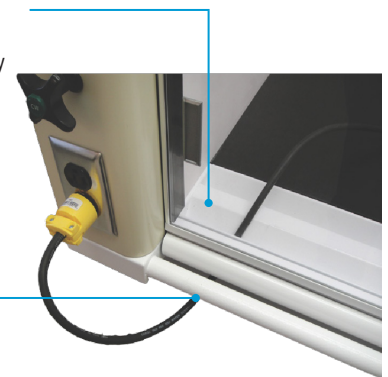
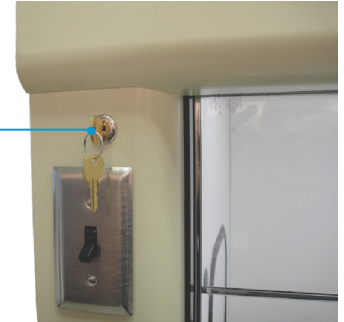
DESIGN: Sash Height is 35" providing a clear unobstructed view of the hood interior.

DESIGN: Full View Compination Sash features top hung rollers and full contact guides at the lower edge of the panels, this allows for smoother sash operation.

SAFETY: Keyed Sash Lock stops sash from rising above 18" operating position. Unlocked sash provides 27 1/2" setup position.

PERFORMANCE: Flush Airfoil with secondary containment trough and safety bar allow for optimal performance and safety.

SAFETY: Cord Slot allows cords to pass through and sash to be fully closed.



CiF APEX-air HP Series fume hood, is a fume hood designed to provide the maximum personal protection at an economical operating cost. Operating at an exhaust volume of less than half of a conventional hood, the CiF HP Series hood not only saves money by reducing the volume of air that needs to be conditioned and exhausted, it reduces the size of the HVAC equipment saving on the original capital investment. Although efficiency is the goal of design, we have not compromised on the you purchase a fume hood in the first place. Safety!

Standard Features

- Rounded corners at hood entrance and aerodynamic sash pull, both allow for smooth air flow with less turbulence
- Engineered baffle system for proper air distribution and constant face velocity
- Flush sill containment trough with an angled surface and a white Plas-Cote finish for durability and chemical resistance
- 35" high viewing area with a maximum sash opening to 27.5" high
- UL Listed, white fiberglass reinforced thermoset polyester interior lining and a round 304 stainless steel duct collar
- Sash operates with a chain and sprocket mechanism



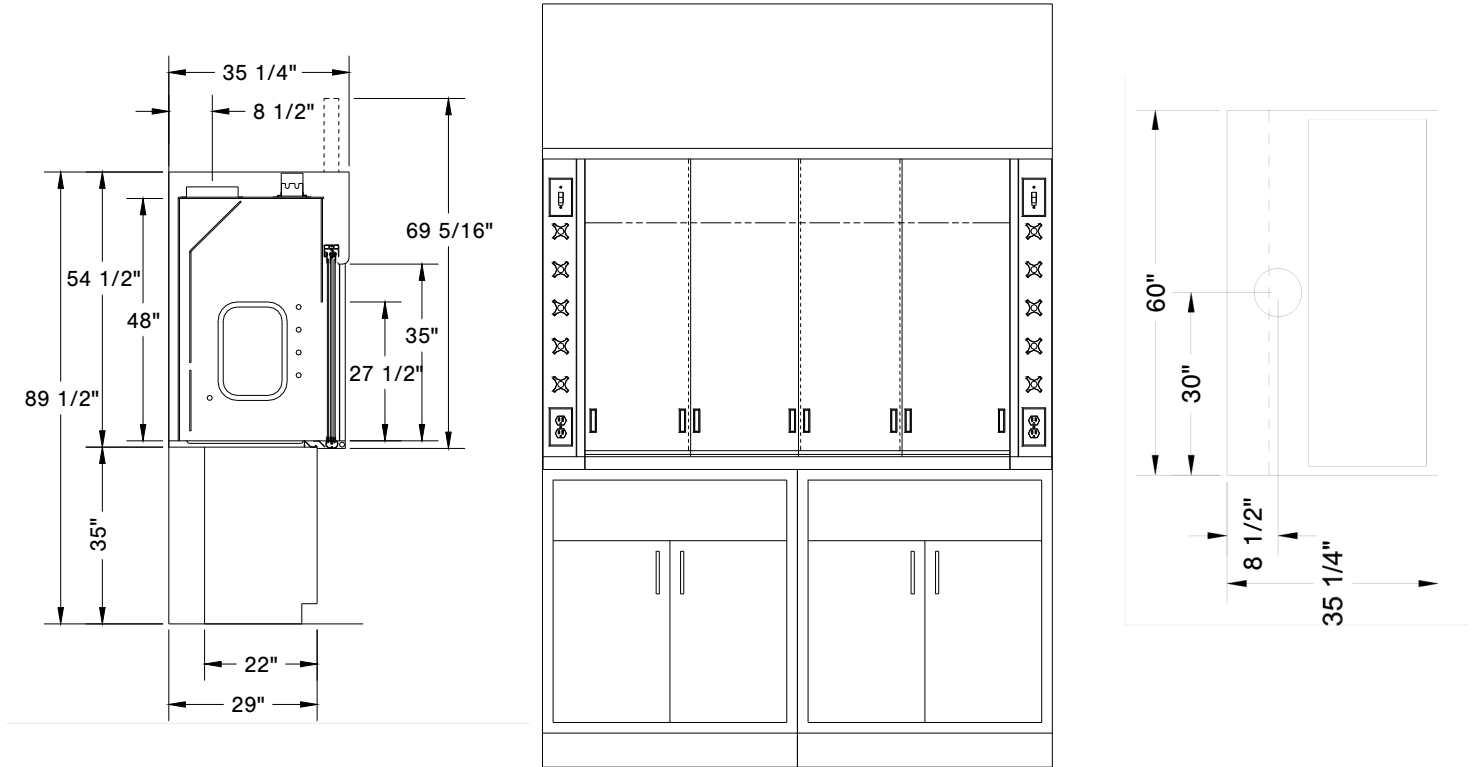
53 Courtland Avenue | Vaughan, Ontario, Canada L4K 3T2 | 905.738.5821
www.cifsolutions.com

©2024 CiF Lab Solutions LP



CiFLABSOLUTIONS

*ASHRAE 110 and NIH modified protocol Independent Third Party Tested



APEX-air HP Fume Hood Airflow Data

EXHAUST DATA @ 100 FPM

Hood Size (feet)	Collar Size Diameter (inches)	Face Velocity				
		CFM	SP	18" Vertical	27.5" Vertical	Horizontal
4	8	380	.13	80	52*	107
5	8	500	.19	80	52*	106
6	10	620	.14	80	52*	106
8	2 (8)	860	.15	80	52*	106

*27.5" vertical opening should be used for set-up only

CFM (cubic feet per minute) SP (static pressure)

