



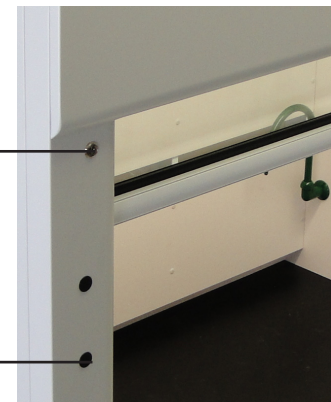
PERFORMANCE: Airfoil is aerodynamic, eliminating turbulence as air enters the hood.

DESIGN: Sash Viewing Height is 35", providing a clear, unobstructed view of the hood interior.

DESIGN: One-Piece Gasketed Access Panels are easy to remove and install for access to utility lines.



SAFETY: The Keyed Sash Lock prevents the sash from rising above the 18" operating position. The unlocked sash provides a 27 1/2" setup position.



DESIGN: Pre-Punched Fixture Holes for ease of adding future required plumbed services.



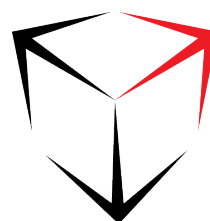
The CiF APEX-air GP Series fume hood will fit your everyday laboratory project needs and protect the end user from harmful chemicals. Safety is the primary concern with the GP Series hood, which is ASHRAE 110 Tested. The hood's design provides maximum safety at minimal cost, with many standard features such as sash stops and combination sashes. The CiF Apex Air GP Series Hood is the perfect laboratory fume hood for your next project.

Standard Features

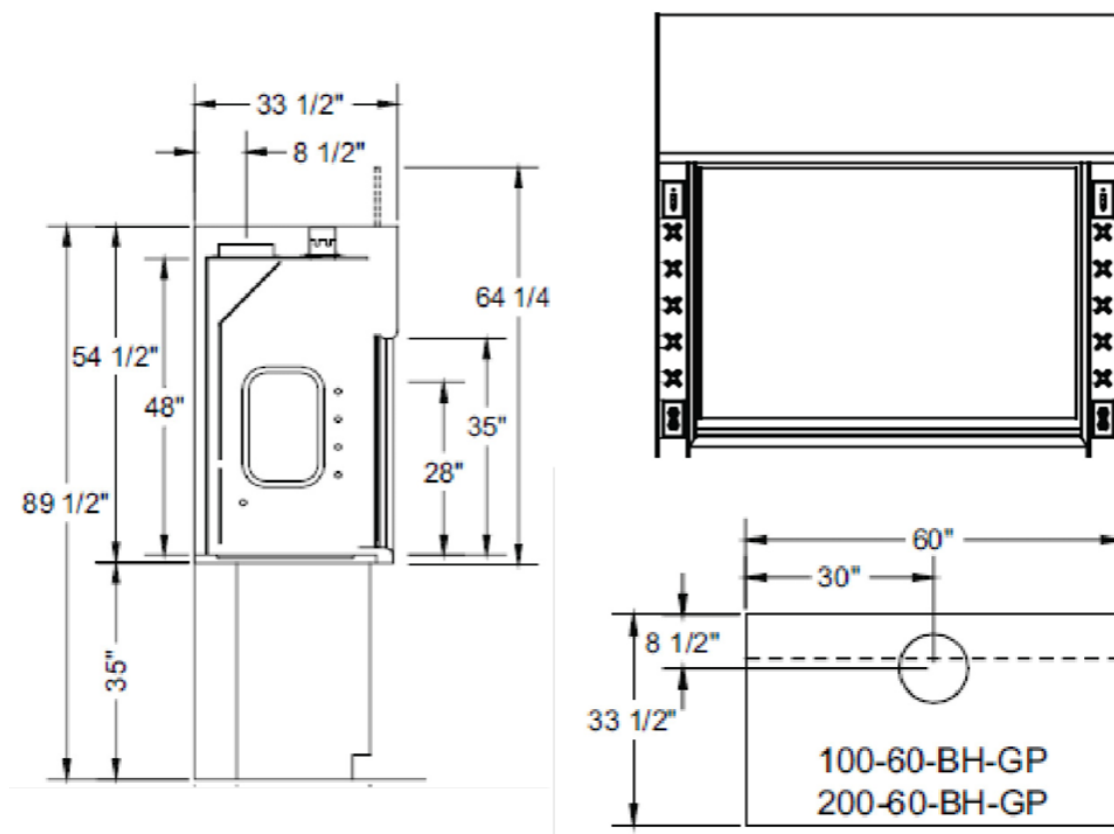
- Front posts are radiused allowing for smooth airflow entry into the hood.
- Downdraft bypass system for efficient airflow.
- Standard 1" MDF panels all exposed edges will be sanded smooth
- UL listed, white fiberglass reinforced thermoset polyester interior lining.
- The sash has a 27 1/2" opening height and utilizes a reliable cable and pulley counterbalance system.



53 Courtland Avenue | Vaughan, Ontario, Canada L4K 3T2
905.738.5821 | www.cifsolutions.com



*ASHRAE 110 Tested



APEX-air GP Fume Hood Airflow Data

Hood Size (feet)	Collar Size Diameter (inches)	Full Open (100 FPM)		Full Open (80 FPM)		18" Open (100 FPM)		18" Open (80 FPM)	
		CFM	SP	CFM	SP	CFM	SP	CFM	SP
4	10	739	.26	591	.16	475	.11	380	.07
5	11	972	.29	778	.18	625	.12	500	.08
6	12	1,206	.30	964	.19	775	.12	620	.08
8	10 (2)	1,672	.30	1,338	.19	1,075	.12	860	.08

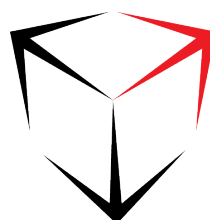
*27.5" vertical opening should be used for set-up only

CFM (cubic feet per minute) SP (static pressure)



53 Courtland Avenue | Vaughan, Ontario, Canada L4K 3T2
905.738.5821 | www.cifsolutions.com

©2024 CiF Lab Solutions LP



CiFLABSOLUTIONS