

Laboratory Workstations – Manual and Electric Height Adjustable



Laboratory workstations are compatible with accessories within this section only.



Laboratory Workstations

Build Your Own Workstation in 4 Simple Steps!

1

Select
Workstation
Base Frame

2

Select
Feet or Casters
Type

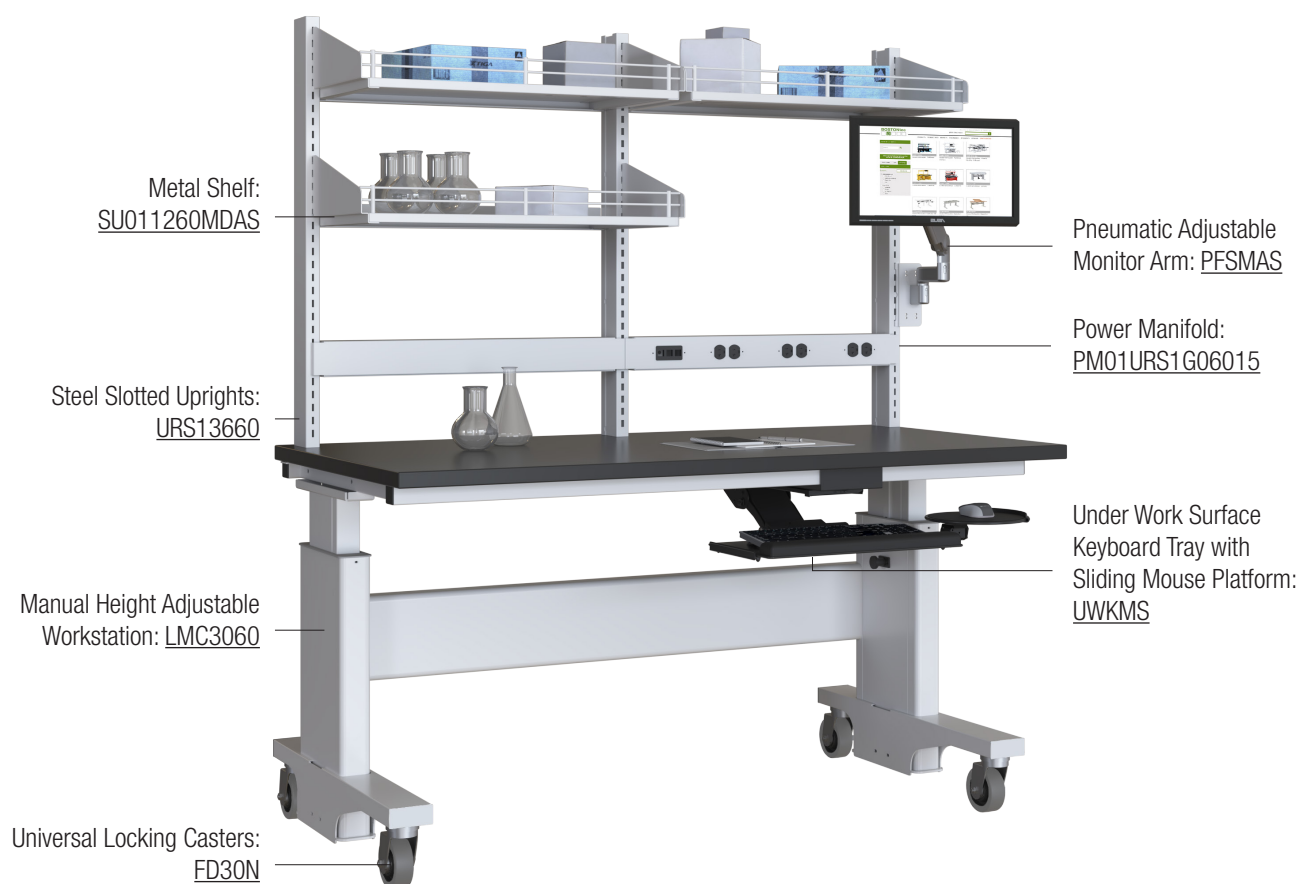
3

Select
Work Surface
Material

4

Select
Accessories

Typical Laboratory Workstation



Laboratory Workstations

Electric Height Adjustable Laboratory Workstation

This workstation is ideal for multiple users and maximum configurability in a fast paced lab environment. Work surface height is easily adjustable at the touch of a button.



Manual Height Adjustable Laboratory Workstation

This frame is best for single-shift, single-operator applications where frequent height changes are not required. Height adjustments are made by removing the locking hand screw, repositioning the telescoping leg to the desired height and replacing the locking hand screw.



FEATURES:

- Cantilevered style leg ensures ample leg room
- Designed to support 5th to 95th percentile operators in a sitting or standing posture
- Adjusts 28" to 44" without work surface
- Programmable switch provides digital height read-out and preset adjustability for 3 positions
- Electric style has dual-synchronized linear actuators with integral limit switches, 12 VDC low voltage control
- Supports ADA compliance
- Feet or casters, work surface and accessories ordered separately

FEET AND CASTERS

Leveler Feet

- Allow user to level workstation on uneven surfaces
- Leveler glides included
- Shown above on LMC model



Universal Locking Casters

- All 4 locking casters
- Polyurethane on polyolefin wheel
- 5.12" overall height; 4" wheel
- Non-marking



Universal Leveling Casters

- Nylon wheel; rubber leveling pad
- 2 1/2" wheel; 4 1/2" overall height
- Non-marking



See [chart](#) for feet and caster ordering information.

BUILD YOUR PART NUMBER

Electric: LPC **Manual:** LMC

Available in depths: 30" | 36"

Available in widths: 36" | 48" | 60" | 72"

Additional sizes available upon request

**Based on evenly distributed loads*

LPC3060

Prefix

Depth

Width

(based on work surface size)

Feet and Caster Part Numbers

TABLE TYPE	DEPTH	LEVELER FEET	HEAVY DUTY 5" CASTER (2 & 2)	HEAVY DUTY 5" CASTER (4 LOCKING)	UNIVERSAL LEVELING CASTER
LMC	30	FA30M	FD30M	FE30M	FK30M
	36	FA36M	FD36M	FE36M	FK36M
LPC	30	FA30N	FD30N	FE30N	FK30N
	36	FA36N	FD36N	FE36N	FK36N

Laboratory Accessories for Workstations



Surface-Mount, Steel Slotted Uprights

UPRIGHT CAPACITY FOR 36"W & 48"W WORKSTATIONS: 150 lbs

UPRIGHT CAPACITY FOR 60"W & 72"W WORKSTATIONS: 225 lbs

- Allow convenient access to accessories with optimal ergonomic reach access increasing productivity
- Slotting pattern allows adjustment in 1" increments without tools
- Accept laboratory accessories only
- Include hardware and mounting brackets

PART NO.	DESCRIPTION
URS13636	36"h Uprights for 36"w workstation (set of 2)
URS13648	36"h Uprights for 48"w workstation (set of 2)
URS13660	36"h Uprights for 60"w workstation (set of 3)
URS13672	36"h Uprights for 72"w workstation (set of 3)
URS14836	48"h Uprights for 36"w workstation (set of 2)
URS14848	48"h Uprights for 48"w workstation (set of 2)
URS14860	48"h Uprights for 60"w workstation (set of 3)
URS14872	48"h Uprights for 72"w workstation (set of 3)



Premium Grade Laminate Shelf

30"W SHELF CAPACITY: 100 lbs

36"W SHELF CAPACITY: 120 lbs

48"W SHELF CAPACITY: 160 lbs

- Provides additional storage space within operator reach to keep work surface space available
- Includes a structural rear retainer lip
- Includes two angled brackets



PART NO.	DESCRIPTION
SU011236LNAS	0.75"h x 12"d x 36"w Shelf without rail for 36" workstation
SU011236LDAS	0.75"h x 12"d x 36"w Shelf with double rail front lip for 36" workstation
SU011248LNAS	0.75"h x 12"d x 48"w Shelf without rail for 48" workstation
SU011248LDAS	0.75"h x 12"d x 48"w Shelf with double rail front lip for 48" workstation
SU011260LNAS	0.75"h x 12"d x 30"w Shelf without rail for 60" workstation
SU011260LDAS	0.75"h x 12"d x 30"w Shelf with double rail front lip for 60" workstation
SU011272LNAS	0.75"h x 12"d x 36"w Shelf without rail for 72" workstation
SU011272LDAS	0.75"h x 12"d x 36"w Shelf with double rail front lip for 72" workstation

Laboratory Accessories for Workstations

Metal Shelf

30" W SHELF CAPACITY: 100 lbs

36" W SHELF CAPACITY: 120 lbs

48" W SHELF CAPACITY: 160 lbs

- Provides additional storage space within operator reach to keep work surface open
- Includes two angled brackets
- Includes a structural rear retainer lip

PART NO.	DESCRIPTION
SU011236MNAS	0.75"t x 12"d x 36"w Shelf without rail for 36" workstation
SU011236MDAS	0.75"t x 12"d x 36"w Shelf with double rail front lip for 36" workstation
SU011248MNAS	0.75"t x 12"d x 48"w Shelf without rail for 48" workstation
SU011248MDAS	0.75"t x 12"d x 48"w Shelf with double rail front lip for 48" workstation
SU011260MNAS	0.75"t x 12"d x 30"w Shelf without rail for 60" workstation
SU011260MDAS	0.75"t x 12"d x 30"w Shelf with double rail front lip for 60" workstation
SU011272MNAS	0.75"t x 12"d x 36"w Shelf without rail for 72" workstation
SU011272MDAS	0.75"t x 12"d x 36"w Shelf with double rail front lip for 72" workstation

LED Under Shelf Light

- Provides increased visibility and lighting for detailed tasks such as medical device assembly and testing/research
- Built-in on/off switch with infinite dimming capability
- 60w power supply and jumper cords
- Mounts underneath shelf; screw and magnetic mounting clips included
- One task light recommended per shelf

PART NO.	DESCRIPTION
TLXXXX17	17" w Task Light
TLXXXX31	31" w Task Light

BUILD YOUR PART NUMBER

Shelf Depth:	H (half) F (full)
Table Depth:	30" 36"
Table Width:	36" 48" 60" 72"
Shelf Material:	P (phenolic resin) E (epoxy) L (laminated)
Rail Kit:	LVSR

LUSH023060E

Prefix Shelf Depth Table Depth Table Width Shelf Material



Laboratory Accessories for Workstations

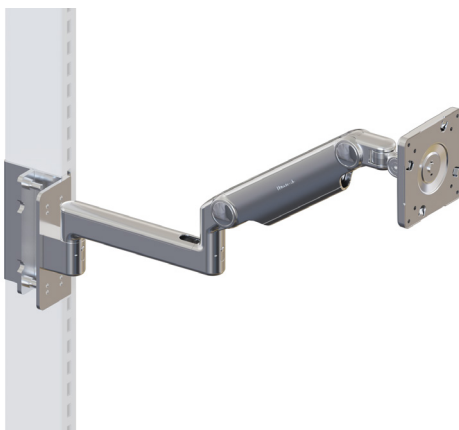
**CPU12****CPU20**

Under Work Surface CPU Holders

CAPACITY CPU12: 15 lbs**CAPACITY CPU20: 50 lbs**

- Securely holds CPU off of floor and provides easy access when needed
- Easy installation via Quick Lock Technology
- Adjusts to fit CPUs 1"-5"w by 6"-12"h (CPU12)
- Adjusts to fit CPUs 3½"-9"w by 12"-20"h (CPU20)
- Slides smoothly on nylon glides in 16" track
- 360° degree swivel allows access to cables and ports
- Mounts under all laminate and hardwood work surfaces at least 30"d

PART NO.	DESCRIPTION
CPU12	CPU Holder
CPU20	CPU Holder



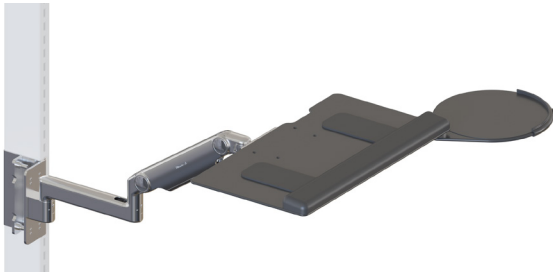
Pneumatic Height Adjustable Flat Screen Monitor Arm

CAPACITY: 15.5 lbs

- Provides optimum flexibility to move monitor into position
- Has tilt adjustability for improved viewing angle
- Holds monitor in place
- Height adjustability range = 11"
- Extension adjustability range = 22"

PART NO.	DESCRIPTION
PFSMAS	Pneumatic Height Adjustable Flat Screen Monitor Arm

Laboratory Accessories for Workstations



Pneumatic Height Adjustable Keyboard Tray with Mouse Platform

CAPACITY: 15.5 lbs

- Provides optimum flexibility to move keyboard into ergonomic position
- Keyboard tray rotates for easy adjustment
- Holds tray securely in place
- Tray includes 2" padded ergonomic wrist support strip for operator comfort
- Height adjustability range = 11"
- Extension adjustability range = 22"
- Keyboard tray is 10 1/2"d x 19"w; mouse platform is 8 3/4" diameter

PART NO.	DESCRIPTION
PKBAAS	Pneumatic Height Adjustable Keyboard Tray w/Mouse Platform



Under Work Surface Keyboard Tray

CAPACITY: 15 lbs

- Compatible with LPC, LMC, LUE, and LUC at all available depths.
- 18" track to allows operator to access or stow as needed
- 0°-15° tilt
- 7" height adjustability

Keyboard Tray with Sliding Mouse Platform

Keyboard Tray

- Tray size 10.625"d x 19"w
- Includes 19" Technogel palm support

Mouse Platform

- 9" diameter
- 8" slide adjustment
- Left/right adaptable slide mount to suit user preference

PART NO.	DESCRIPTION
UWKMS	Under-WS Keyboard Tray w/Sliding Mouse Platform



Keyboard and Mouse Tray

- Tray size 10.625"d x 27"w
- Includes 27" Technogel palm support
- Built-in left/right mouse area

PART NO.	DESCRIPTION
UWKMP	Under Work Surface Keyboard & Mouse Platform

Laboratory Accessories for Workstations



(Fourth set of duplex outlets
located on power manifold back)

Power Manifold

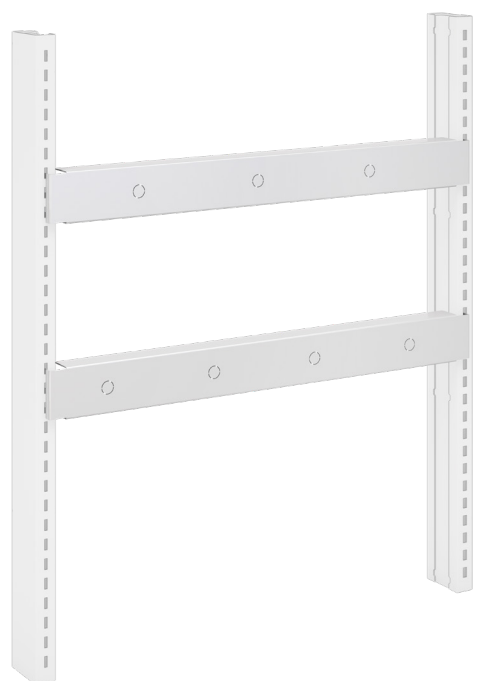
- Allows convenient access to electricity and/or data usage
- Data ports are non-wired
- 20A rated manifold
- Cord Length: 15'

Four Duplex Outlets

PART NO.	DESCRIPTION
PM00URS1G03615	For 36" wide table
PM00URS1G04815	For 48" wide table
PM00URS1G06015	For 60" wide table (30" manifold)
PM00URS1G07215	For 72" wide table (36" manifold)

Four Duplex Outlets & One Data Port

PART NO.	DESCRIPTION
PM01URS1G03615	For 36" wide table
PM01URS1G04815	For 48" wide table
PM01URS1G06015	For 60" wide table (30" manifold)
PM01URS1G07215	For 72" wide table (36" manifold)



Gas Manifold

- Allows convenient access to gases
- Open back design
- Fixtures and hoses ordered separately

Three Fixture Holes

PART NO.	DESCRIPTION
GM50URS136	For 36" wide table
GM50URS148	For 48" wide table
GM50URS160	For 60" wide table (30" manifold)
GM50URS172	For 72" wide table (36" manifold)

Four Fixture Holes

PART NO.	DESCRIPTION
GM51URS136	For 36" wide table
GM51URS148	For 48" wide table
GM51URS160	For 60" wide table (30" manifold)
GM51URS172	For 72" wide table (36" manifold)

Laboratory Accessories for Workstations



Plumbing Hoses

- 3/8" FNPT and male quick connect – 1

BUILD YOUR PART NUMBER

Color and Service:

Color is BLACK and service is HELIUM - **K1**
 Color is ORANGE and service is AIR - **K2**
 Color is GREEN and service is WATER - **K3**
 Color is YELLOW and service is VACUUM - **K4**
 Color is BLUE and service is NATURAL GAS - **K5**
 Color is WHITE and service is MISC - **K6**
 Color is PURPLE and service is ARGON - **K7**
 Color is BROWN and service is NITROGEN - **K8**

Hose Length:

1-Foot hose - **A**
 2-Foot hose - **B**
 3-Foot hose - **C**
 4-Foot hose - **D**
 5-Foot hose - **E**
 6-Foot hose - **F**
 7-Foot hose - **G**
 8-Foot hose - **H**
 9-Foot hose - **I**
 10-Foot hose - **J**

PH1K2D

Prefix

Color
and
Service

Hose
Length



Laboratory Accessories for Workstations



Plumbing Fixtures

BUILD YOUR PART NUMBER

Color and Service:

Color is BLACK and service is HELIUM - **K1**
Color is ORANGE and service is AIR - **K2**
Color is GREEN and service is WATER - **K3**
Color is YELLOW and service is VACUUM - **K4**
Color is BLUE and service is NATURAL GAS - **K5**
Color is WHITE and service is MISC - **K6**
Color is PURPLE and service is ARGON - **K7**
Color is BROWN and service is NITROGEN - **K8**

Product and Finish:

Standard/Chrome - **A**
ColorTech/White - **B**
ColorTech/Gray - **C**
ColorTech/Tan - **D**
ColorTech/Polished Chrome with clear epoxy - **E**
ColorTech/Satin Nickel with clear epoxy - **F**
ColorTech/Satin Chrome with epoxy - **G**

Valve Type:

Ball valve - **0**
Needle valve - **1**
Fine Control Needle Valve - **2**

PV1K1C2

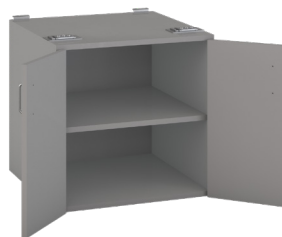
Prefix

Color &
ServiceProduct
& FinishValve
Type

Laboratory Accessories for Workstations

Hanging Cabinets

- Durable under work surface storage to keep work surface space available
- Premium grade laminate with 3mm edging



PART NO.	DESCRIPTION
KA051242418 / KA052242418	Hanging laminate cabinet with hinged left/right door with (2) pull-out shelves - 24h x 24d x 18w
KA051242424 / KA052242424	Hanging laminate cabinet with hinged left/right door & (2) pull-out shelves - 24h x 24d x 24w
KA403242418	Hanging cabinet with (3) drawers - 24h x 24d x 18w
KA403242424	Hanging cabinet with (3) drawers - 24h x 24d x 24w
KA010242424	Hanging cabinet with (2) doors - 24h x 24d x 24w
KA010242430	Hanging cabinet with (2) doors - 24h x 24d x 30w
KA010242436	Hanging cabinet with (2) doors - 24h x 24d x 36w
KA050242424	Hanging cabinet with (2) doors and (2) pull-out shelves - 24h x 24d x 24w
KA050242430	Hanging cabinet with (2) doors and (2) pull-out shelves - 24h x 24d x 30w
KA050242436	Hanging cabinet with (2) doors and (2) pull-out shelves - 24h x 24d x 36w
KA454242418	Hanging cabinet with (2) drawers and (1) lateral file drawer - 24h x 24d x 18w
KAKA3042418	Hanging knee drawer with (1) drawer - 4h x 24d x 18w
KAKA3042424	Hanging knee drawer with (1) drawer - 4h x 24d x 24w
KAKA3042430	Hanging knee drawer with (1) drawer - 4h x 24d x 30w