

Laboratory Utility Tables (formerly Tech Center)

Laboratory Utility Table

This sturdy, four-post workstation is available with leg extensions and/or casters. The leg extensions are inserted inside the workstation legs and secured with machine screws.

FEATURES:

- Ships knocked down (KD)
- Work surface and accessories ordered separately



Load Capacity
1,000 lbs* | LUE

Utility Table with Leg Extensions and Leveler Glides (LUE)

- 8" of height adjustment
- Includes leveler glides and leg extensions

Utility Table with Casters (LUC)

- Fixed height
- Includes 2-locking and 2-non-locking casters
- 3" polyurethane casters
- Increases mobility

Utility Table with Leg Extensions and Casters (LUX)

- "x" of height adjustment
- Includes 2-locking and 2-non-locking casters
- 3" polyurethane casters



Load Capacity
600 lbs* | LUC

BUILD YOUR PART NUMBER

LUE: Utility table with Leveler Glides and Leg Extensions

LUC: Utility Table with Swivel Casters

LUX: Utility Table with Leg Extensions and Casters

Available in heights: 30" | 36"

Available in depths: 30" | 36"

Available in widths: 36" | 48" | 60" | 72"

Additional sizes available upon request

**Based on evenly distributed loads*

LUC303660

Prefix

Height

Depth

Width

(based on work surface size)

Laboratory Accessories for Utility Tables



Surface-Mount, Steel Slotted Uprights

UPRIGHT CAPACITY FOR 36"W & 48"W WORKSTATIONS: 150 lbs

UPRIGHT CAPACITY FOR 60"W & 72"W WORKSTATIONS: 225 lbs

- Allow convenient access to accessories with optimal ergonomic reach access increasing productivity
- Slotting pattern allows adjustment in 1" increments without tools
- Accept laboratory accessories only
- Include hardware and mounting brackets

PART NO.	DESCRIPTION
URS13636	36"h Uprights for 36"w workstation (set of 2)
URS13648	36"h Uprights for 48"w workstation (set of 2)
URS13660	36"h Uprights for 60"w workstation (set of 3)
URS13672	36"h Uprights for 72"w workstation (set of 3)
URS14836	48"h Uprights for 36"w workstation (set of 2)
URS14848	48"h Uprights for 48"w workstation (set of 2)
URS14860	48"h Uprights for 60"w workstation (set of 3)
URS14872	48"h Uprights for 72"w workstation (set of 3)



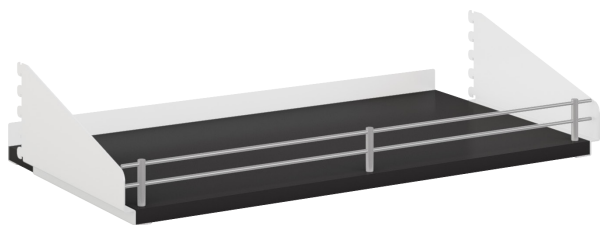
Premium Grade Laminate Shelf

30"W SHELF CAPACITY: 100 lbs

36"W SHELF CAPACITY: 120 lbs

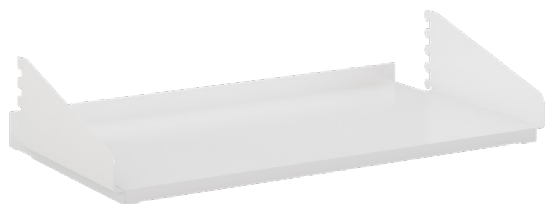
48"W SHELF CAPACITY: 160 lbs

- Provides additional storage space within operator reach to keep work surface space available
- Includes a structural rear retainer lip
- Includes two angled brackets



PART NO.	DESCRIPTION
SU011236LNAS	0.75"h x 12"d x 36"w Shelf without rail for 36" workstation
SU011236LDAS	0.75"h x 12"d x 36"w Shelf with double rail front lip for 36" workstation
SU011248LNAS	0.75"h x 12"d x 48"w Shelf without rail for 48" workstation
SU011248LDAS	0.75"h x 12"d x 48"w Shelf with double rail front lip for 48" workstation
SU011260LNAS	0.75"h x 12"d x 30"w Shelf without rail for 60" workstation
SU011260LDAS	0.75"h x 12"d x 30"w Shelf with double rail front lip for 60" workstation
SU011272LNAS	0.75"h x 12"d x 36"w Shelf without rail for 72" workstation
SU011272LDAS	0.75"h x 12"d x 36"w Shelf with double rail front lip for 72" workstation

Laboratory Accessories for Utility Tables



Metal Shelf

30" W SHELF CAPACITY: 100 lbs

36" W SHELF CAPACITY: 120 lbs

48" W SHELF CAPACITY: 160 lbs

- Provides additional storage space within operator reach to keep work surface open
- Includes two angled brackets
- Includes a structural rear retainer lip

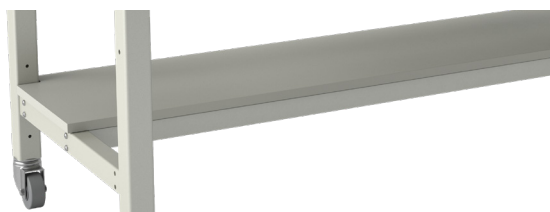
PART NO.	DESCRIPTION
SU011236MNAS	0.75"t x 12"d x 36"w Shelf without rail for 36" workstation
SU011236MDAS	0.75"t x 12"d x 36"w Shelf with double rail front lip for 36" workstation
SU011248MNAS	0.75"t x 12"d x 48"w Shelf without rail for 48" workstation
SU011248MDAS	0.75"t x 12"d x 48"w Shelf with double rail front lip for 48" workstation
SU011260MNAS	0.75"t x 12"d x 30"w Shelf without rail for 60" workstation
SU011260MDAS	0.75"t x 12"d x 30"w Shelf with double rail front lip for 60" workstation
SU011272MNAS	0.75"t x 12"d x 36"w Shelf without rail for 72" workstation
SU011272MDAS	0.75"t x 12"d x 36"w Shelf with double rail front lip for 72" workstation



LED Under Shelf Light

- Provides increased visibility and lighting for detailed tasks such as medical device assembly and testing/research
- Built-in on/off switch with infinite dimming capability
- 60w power supply and jumper cords
- Mounts underneath shelf; screw and magnetic mounting clips included
- One task light recommended per shelf

PART NO.	DESCRIPTION
TLXXX17	17" w Task Light
TLXXX31	31" w Task Light



Under Work Surface Shelving

- Provides additional storage for occasional use items
- Available in half or full depth
- Choice of Phenolic Resin, Epoxy or Laminate surface

BUILD YOUR PART NUMBER

Shelf Depth:	H (half) F (full)
Table Depth:	30" 36"
Table Width:	36" 48" 60" 72"
Shelf Material:	P (phenolic resin) E (epoxy) L (laminate)
Rail Kit:	LVSR

LUSH023060E

Prefix Shelf Depth Table Depth Table Width Shelf Material

Laboratory Accessories for Utility Tables



CPU12



CPU20

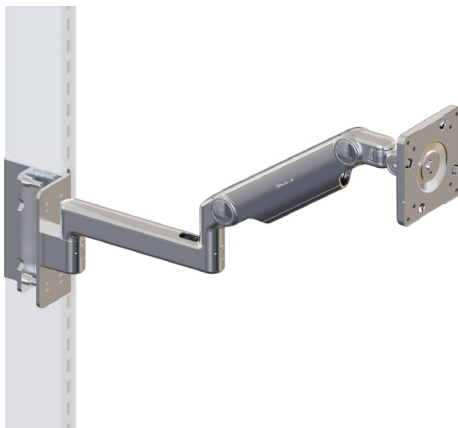
Under Work Surface CPU Holders

CAPACITY CPU12: 15 lbs

CAPACITY CPU20: 50 lbs

- Securely holds CPU off of floor and provides easy access when needed
- Easy installation via Quick Lock Technology
- Adjusts to fit CPUs 1"-5"w by 6"-12"h (CPU12)
- Adjusts to fit CPUs 3½"-9"w by 12"-20"h (CPU20)
- Slides smoothly on nylon glides in 16" track
- 360° degree swivel allows access to cables and ports
- Mounts under all laminate and hardwood work surfaces at least 30"d

PART NO.	DESCRIPTION
CPU12	CPU Holder
CPU20	CPU Holder



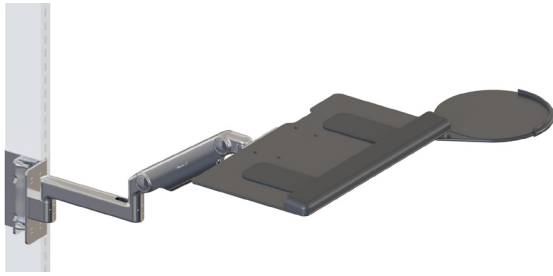
Pneumatic Height Adjustable Flat Screen Monitor Arm

CAPACITY: 15.5 lbs

- Provides optimum flexibility to move monitor into position
- Has tilt adjustability for improved viewing angle
- Holds monitor in place
- Height adjustability range = 11"
- Extension adjustability range = 22"

PART NO.	DESCRIPTION
PFSMAS	Pneumatic Height Adjustable Flat Screen Monitor Arm

Laboratory Accessories for Utility Tables



Pneumatic Height Adjustable Keyboard Tray with Mouse Platform

CAPACITY: 15.5 lbs

- Provides optimum flexibility to move keyboard into ergonomic position
- Keyboard tray rotates for easy adjustment
- Holds tray securely in place
- Tray includes 2" padded ergonomic wrist support strip for operator comfort
- Height adjustability range = 11"
- Extension adjustability range = 22"
- Keyboard tray is 10 ½"d x 19"w; mouse platform is 8 ¾" diameter

PART NO.	DESCRIPTION
PKBAAS	Pneumatic Height Adjustable Keyboard Tray w/Mouse Platform



UWKMS

Under Work Surface Keyboard Tray

CAPACITY: 15 lbs

- Compatible with LPC, LMC, LUE, and LUC at all available depths.
- 18" track to allows operator to access or stow as needed
- 0°-15° tilt
- 7" height adjustability

Keyboard Tray with Sliding Mouse Platform

Keyboard Tray

- Tray size 10.625"d x 19"w
- Includes 19" Technogel palm support

Mouse Platform

- 9" diameter
- 8" slide adjustment
- Left/right adaptable slide mount to suit user preference

PART NO.	DESCRIPTION
UWKMS	Under-WS Keyboard Tray w/Sliding Mouse Platform



UWKMP

Keyboard and Mouse Tray

- Tray size 10.625"d x 27"w
- Includes 27" Technogel palm support
- Built-in left/right mouse area

PART NO.	DESCRIPTION
UWKMP	Under Work Surface Keyboard & Mouse Platform

Laboratory Accessories for Utility Tables



(Fourth set of duplex outlets
located on power manifold back)

Power Manifold

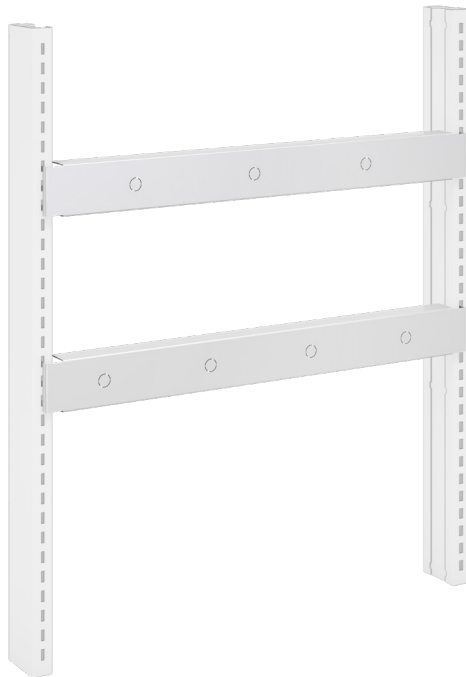
- Allows convenient access to electricity and/or data usage
- Data ports are non-wired
- 20A rated manifold
- Cord Length: 15'

Four Duplex Outlets

PART NO.	DESCRIPTION
PM00URS1G03615	For 36" wide table
PM00URS1G04815	For 48" wide table
PM00URS1G06015	For 60" wide table (30" manifold)
PM00URS1G07215	For 72" wide table (36" manifold)

Four Duplex Outlets & One Data Port

PART NO.	DESCRIPTION
PM01URS1G03615	For 36" wide table
PM01URS1G04815	For 48" wide table
PM01URS1G06015	For 60" wide table (30" manifold)
PM01URS1G07215	For 72" wide table (36" manifold)



Gas Manifold

- Allows convenient access to gases
- Open back design
- Fixtures and hoses ordered separately

Three Fixture Holes

PART NO.	DESCRIPTION
GM50URS136	For 36" wide table
GM50URS148	For 48" wide table
GM50URS160	For 60" wide table (30" manifold)
GM50URS172	For 72" wide table (36" manifold)

Four Fixture Holes

PART NO.	DESCRIPTION
GM51URS136	For 36" wide table
GM51URS148	For 48" wide table
GM51URS160	For 60" wide table (30" manifold)
GM51URS172	For 72" wide table (36" manifold)



Laboratory Accessories for Utility Tables



Plumbing Hoses

- 3/8" FNPT and male quick connect – 1

BUILD YOUR PART NUMBER

Color and Service:

Color is BLACK and service is HELIUM - **K1**
Color is ORANGE and service is AIR - **K2**
Color is GREEN and service is WATER - **K3**
Color is YELLOW and service is VACUUM - **K4**
Color is BLUE and service is NATURAL GAS - **K5**
Color is WHITE and service is MISC - **K6**
Color is PURPLE and service is ARGON - **K7**
Color is BROWN and service is NITROGEN - **K8**

PH1K2D

Prefix

Color
and
Service

Hose
Length

Hose Length:

1-Foot hose - **A**
2-Foot hose - **B**
3-Foot hose - **C**
4-Foot hose - **D**
5-Foot hose - **E**
6-Foot hose - **F**
7-Foot hose - **G**
8-Foot hose - **H**
9-Foot hose - **I**
10-Foot hose - **J**

Laboratory Accessories for Utility Tables



Plumbing Fixtures

BUILD YOUR PART NUMBER

Color and Service:

- Color is BLACK and service is HELIUM - **K1**
- Color is ORANGE and service is AIR - **K2**
- Color is GREEN and service is WATER - **K3**
- Color is YELLOW and service is VACUUM - **K4**
- Color is BLUE and service is NATURAL GAS - **K5**
- Color is WHITE and service is MISC - **K6**
- Color is PURPLE and service is ARGON - **K7**
- Color is BROWN and service is NITROGEN - **K8**

Product and Finish:

- Standard/Chrome - **A**
- ColorTech/White - **B**
- ColorTech/Gray - **C**
- ColorTech/Tan - **D**
- ColorTech/Polished Chrome with clear epoxy - **E**
- ColorTech/Satin Nickel with clear epoxy - **F**
- ColorTech/Satin Chrome with epoxy - **G**

Valve Type:

- Ball valve - **0**
- Needle valve - **1**
- Fine Control Needle Valve - **2**

PV1K1C2

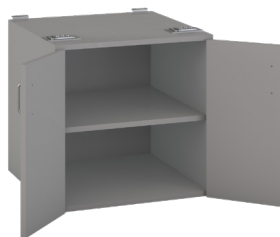
Prefix

Color &
Service

Product
& Finish

Valve
Type

Laboratory Accessories for Utility Tables



Hanging Cabinets

- Durable under work surface storage to keep work surface space available
- Premium grade laminate with 3mm edging

PART NO.	DESCRIPTION
KA051242418 / KA052242418	Hanging laminate cabinet with hinged left/right door with (2) pull-out shelves - 24h x 24d x 18w
KA051242424 / KA052242424	Hanging laminate cabinet with hinged left/right door & (2) pull-out shelves - 24h x 24d x 24w
KA403242418	Hanging cabinet with (3) drawers - 24h x 24d x 18w
KA403242424	Hanging cabinet with (3) drawers - 24h x 24d x 24w
KA010242424	Hanging cabinet with (2) doors - 24h x 24d x 24w
KA010242430	Hanging cabinet with (2) doors - 24h x 24d x 30w
KA010242436	Hanging cabinet with (2) doors - 24h x 24d x 36w
KA050242424	Hanging cabinet with (2) doors and (2) pull-out shelves - 24h x 24d x 24w
KA050242430	Hanging cabinet with (2) doors and (2) pull-out shelves - 24h x 24d x 30w
KA050242436	Hanging cabinet with (2) doors and (2) pull-out shelves - 24h x 24d x 36w
KA454242418	Hanging cabinet with (2) drawers and (1) lateral file drawer - 24h x 24d x 18w
KAKA3042418	Hanging knee drawer with (1) drawer - 4h x 24d x 18w
KAKA3042424	Hanging knee drawer with (1) drawer - 4h x 24d x 24w
KAKA3042430	Hanging knee drawer with (1) drawer - 4h x 24d x 30w





[intentionally left blank]