

Contents

General Information	BC-2
Base Cabinet Dimensions	BC-2
General Storage Base Cabinets.....	BC-3
Corner Base Cabinets	BC-12
Cubicle Storage Base Cabinets	BC-14
Folio Storage Base Cabinets	BC-17
Tote Tray Storage Base Cabinets	BC-19
Sink and Utility Base Cabinets	BC-21
Double-Sided Base Cabinets	BC-24
Knee-Space Cabinets	BC-25
Angled Back Base Cabinets	BC-26
Special Purpose Base Cabinets.....	BC-27
Acid Storage Base Cabinets.....	BC-28
Wood Flammable Storage Base Cabinets	BC-29
Vacuum Pump Storage Base Cabinets.....	BC-30
Base Index	BC-31

General Information

Please review the following for base cabinet information. Contact your CiF Lab Solutions dealer for clarifications.

Casework shown in this section has been pre-engineered for a wide variety of storage and work surface solutions. For specialty purpose applications, please refer to the table of contents for exact pages. If you do not find your solution in this catalog, please contact your CiF Lab Solutions dealer for updated information. We may also be able to custom engineer a cabinet to suit your specific needs.

All cabinet dimensions shown are nominal.

Be sure to utilize fillers, especially at walls and corners, for proper leveling and to allow for door and drawer opening clearances.

Cabinets that require locks, finished ends, finished backs, finished tops and other options, specialty hardware or devices, must be clearly called out or specified accordingly.

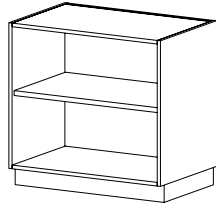
Base Cabinet Dimensions

Base Cabinet Heights		
Nominal	Actual w/96mm Toe Kick, No Top (inches)	Actual w/96mm Toe Kick, No Top (millimeters)
13	12.75	
15	14.75	
17	16.75	
23	22.75	
26	25.75	
29	28.75	
32.75	32.5	
35	34.75	

Base Cabinet Depths		
Nominal	Actual End Panel (inches)	Actual End Panel (millimeters)
12*	12.125	
13	12.125	
15*	15.125	
16	15.125	
22*	22.125	
23	22.125	

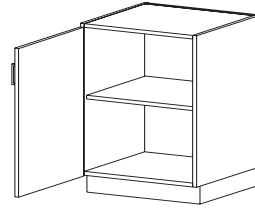
* Open or sliding door cabinets

General Storage Base Cabinets


CAT. NO **B0000**
DESCRIPTION **Open Storage**
 • One adjustable shelf

HEIGHT 13 | 15 | 17 | 23 | 26 | 29 | 32.75 | 35

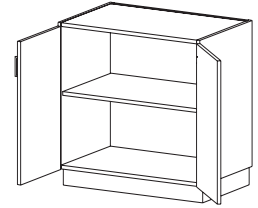
DEPTH 12 | 15 | 22

WIDTH 15 | 18 | 21 | 24 | 27 | 30 | 33 | 36 | 39 | 42 | 45 | 48

B0110 (Hinged L) **B0120** (Hinged R)

Storage with Door
 • One adjustable shelf
 • One hinged door

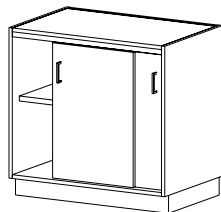
HEIGHT 23 | 25 | 29 | 32.75 | 35

DEPTH 16 | 23

WIDTH 15 | 18 | 21 | 24

B0100
Storage with Doors
 • One adjustable shelf
 • Two hinged doors

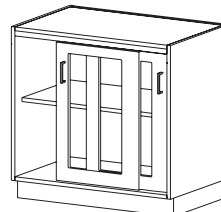
HEIGHT 23 | 26 | 29 | 32.75 | 35

DEPTH 16 | 23

WIDTH 24 | 27 | 30 | 33 | 36 | 39 | 42 | 45 | 48

CAT. NO **B0840**
DESCRIPTION **Sliding Door Storage**
 • One adjustable shelf
 • Two sliding doors

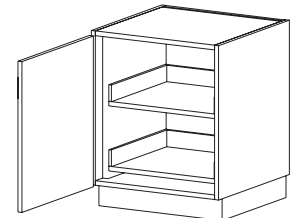
HEIGHT 23 | 26 | 29 | 32.75 | 35

DEPTH 15 | 22

WIDTH 24 | 27 | 30 | 33 | 36 | 39 | 42 | 45 | 48

B0860
Sliding Glazed Door Storage
 • One adjustable shelf
 • Two glazed sliding doors

HEIGHT 23 | 26 | 29 | 32.75 | 35

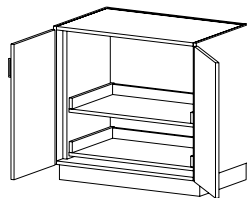
DEPTH 15 | 22

WIDTH 24 | 27 | 30 | 33 | 36 | 39 | 42 | 45 | 48

B0310 (Hinged L) **B0320** (Hinged R)

Roll-Out Storage with Door
 • Two roll-out shelves
 • One hinged door

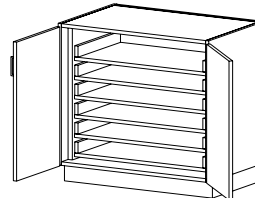
HEIGHT 23 | 26 | 29 | 32.75 | 35

DEPTH 16 | 23

WIDTH 15 | 18 | 21 | 24

CAT. NO **B0340**
DESCRIPTION **Roll-Out Storage with Doors**
 • Two roll-out shelves
 • Two hinged doors

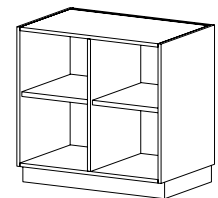
HEIGHT 23 | 26 | 29 | 32.75 | 35

DEPTH 16 | 23

WIDTH 24 | 27 | 30 | 33 | 36 | 39 | 42 | 48

B0360
Roll-Out Storage with Doors
 • Two hinged doors
 • Five roll-out shelves for 29"h, 32.75"h
 • Six roll-out shelves for 35"h

HEIGHT 29 | 32.75 | 35

DEPTH 16 | 23

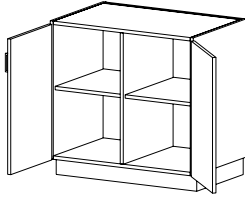
WIDTH 24 | 27 | 30 | 33 | 36 | 39 | 42 | 48

B1000
Open Storage
 • Two adjustable shelves
 • One fixed vertical partition

HEIGHT 13 | 15 | 17 | 23 | 26 | 29 | 32.75 | 35

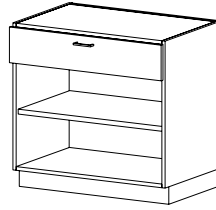
DEPTH 12 | 15 | 22

WIDTH 24 | 27 | 30 | 33 | 36 | 39 | 42 | 45 | 48

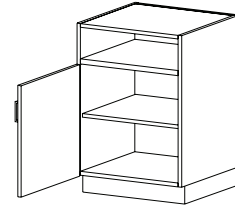
General Storage Base Cabinets (cont'd)



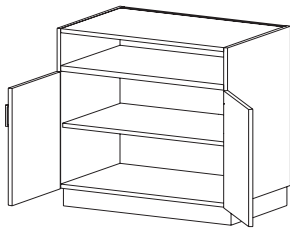
CAT. NO	B1040
DESCRIPTION	Storage with Doors <ul style="list-style-type: none"> • Two adjustable shelves • One fixed vertical partition • Two hinged doors
HEIGHT	23 26 29 32.75 35
DEPTH	16 23
WIDTH	24 27 30 33 36 39 42 48



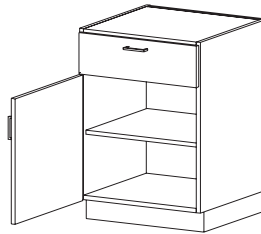
CAT. NO	B3050
DESCRIPTION	Open/Drawer Storage <ul style="list-style-type: none"> • One adjustable shelf • One drawer
HEIGHT	26 29 32.75 35
DEPTH	16 23
WIDTH	15 18 21 24 27 30 33 36 39 42 48



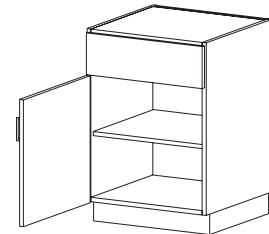
CAT. NO	B3510 (Hinged L) B3520 (Hinged R)
DESCRIPTION	Door/Book Box Storage <ul style="list-style-type: none"> • One hinged door with open book box above • One adjustable shelf
HEIGHT	26 29 32.75 35
DEPTH	16 23
WIDTH	15 18 21 24



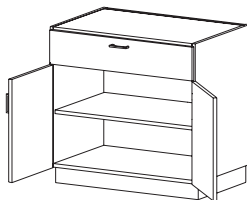
CAT. NO	B3500
DESCRIPTION	Door/Book Box Storage <ul style="list-style-type: none"> • Two hinged doors • One adjustable shelf
HEIGHT	26 29 32.75 35
DEPTH	16 23
WIDTH	24 27 30 33 36 39 42 48



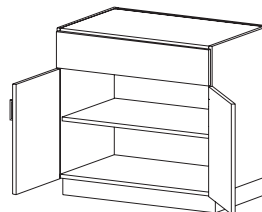
CAT. NO	B3110 (Hinged L) B3120 (Hinged R)
DESCRIPTION	Door/Drawer Storage <ul style="list-style-type: none"> • One adjustable shelf • One drawer • One hinged door
HEIGHT	26 29 32.75 35
DEPTH	16 23
WIDTH	15 18 21 24



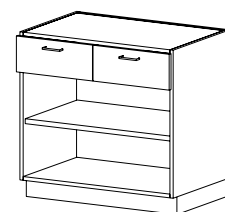
CAT. NO	B3070 (Hinged L) B3060 (Hinged R)
DESCRIPTION	Door Storage <ul style="list-style-type: none"> • One adjustable shelf • One false front • One hinged door
HEIGHT	26 29 32.75 35
DEPTH	16 23
WIDTH	15 18 21 24



CAT. NO	B3000
DESCRIPTION	Door/Drawer Storage <ul style="list-style-type: none"> • One adjustable shelf • One drawer • Two hinged doors
HEIGHT	26 29 32.75 35
DEPTH	16 23
WIDTH	24 27 30 33 36 39 42 48

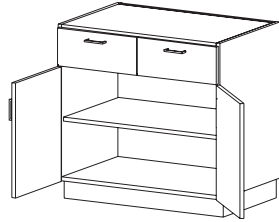


CAT. NO	B3010
DESCRIPTION	Door Storage <ul style="list-style-type: none"> • One adjustable shelf • One false front • Two hinged doors
HEIGHT	26 29 32.75 35
DEPTH	16 23
WIDTH	24 27 30 33 36 39 42 48



CAT. NO	B3150
DESCRIPTION	Open/Drawer Storage <ul style="list-style-type: none"> • One adjustable shelf • Two drawers
HEIGHT	26 29 32.75 35
DEPTH	16 23
WIDTH	24 27 30 33 36 39 42 48

General Storage Base Cabinets (cont'd)

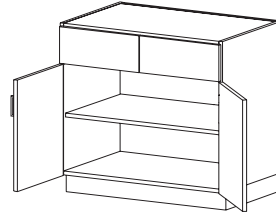

CAT. NO B3100

DESCRIPTION Door/Drawer Storage

- One adjustable shelf
- Two drawers
- Two hinged doors

HEIGHT 26 | 29 | 32.75 (ADA) | 35

DEPTH 16 | 23

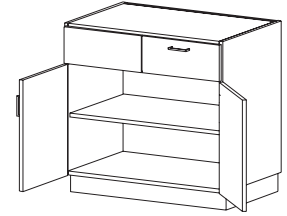
WIDTH 24 | 27 | 30 | 33 | 36 | 39 | 42 | 48

B3020

Door Storage

- One adjustable shelf
- Two separate false fronts
- Two hinged doors

HEIGHT 26 | 29 | 32.75 (ADA) | 35

DEPTH 16 | 23

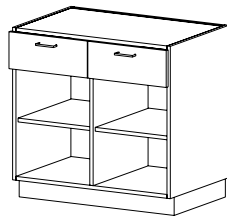
WIDTH 24 | 27 | 30 | 33 | 36 | 39 | 42 | 48

B3030 (Hinged L) B3040 (Hinged R)

Door/Drawer Storage

- One false front
- One adjustable shelf
- One drawer
- Two hinged doors

HEIGHT 26 | 29 | 32.75 (ADA) | 35

DEPTH 16 | 23

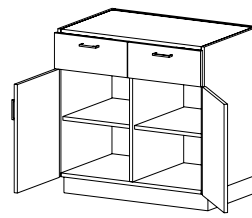
WIDTH 24 | 27 | 30 | 33 | 36 | 39 | 42 | 48

CAT. NO B3160

DESCRIPTION Drawer/Open Storage

- Two adjustable shelves
- One fixed vertical partition
- Two drawers

HEIGHT 26 | 29 | 32.75 (ADA) | 35

DEPTH 16 | 23

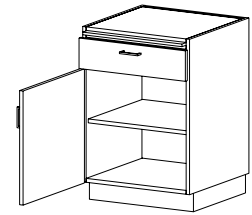
WIDTH 24 | 27 | 30 | 33 | 36 | 39 | 42 | 48

B3170

Door/Drawer Storage

- Two adjustable shelves
- One fixed vertical partition
- Two drawers and two hinged doors

HEIGHT 26 | 29 | 32.75 (ADA) | 35

DEPTH 16 | 23

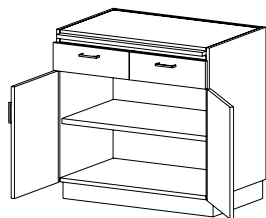
WIDTH 24 | 27 | 30 | 33 | 36 | 39 | 42 | 48

B3310 (Hinged L) B3320 (Hinged R)

Door/Drawer Storage with Pull-Out Writing Surface

- One adjustable shelf
- One drawer and one hinged door

HEIGHT 26 | 29 | 32.75 (ADA) | 35

DEPTH 16 | 23

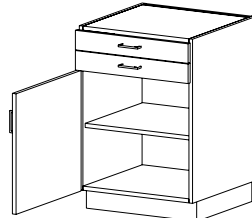
WIDTH 15 | 18 | 21 | 24

CAT. NO B3300

DESCRIPTION Door/Drawer Storage with Pull-Out Writing Surface

- One adjustable shelf
- Two drawers and two hinged doors

HEIGHT 26 | 29 | 32.75 (ADA) | 35

DEPTH 16 | 23

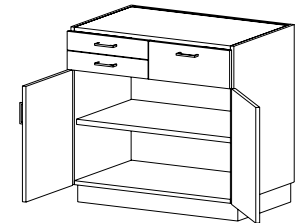
WIDTH 24 | 27 | 30 | 33 | 36 | 39 | 42 | 48

B3410 (Hinged L) B3420 (Hinged R)

Door/Drawer Storage

- One adjustable shelf
- Two drawers and one hinged door

HEIGHT 26 | 29 | 32.75 (ADA) | 35

DEPTH 16 | 23

WIDTH 15 | 18 | 21 | 24

B3430

Door/Drawer Storage

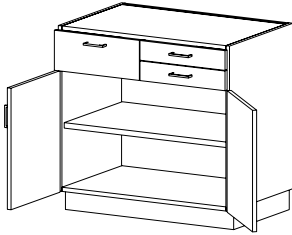
- One adjustable shelf
- Three drawers and two hinged doors

HEIGHT 26 | 29 | 32.75 (ADA) | 35

DEPTH 16 | 23

WIDTH 24 | 27 | 30 | 33 | 36 | 39 | 42 | 48

General Storage Base Cabinets (cont'd)


CAT. NO B3440

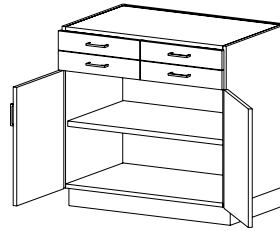
DESCRIPTION Door/Drawer Storage

- One adjustable shelf
- Three drawers
- Two hinged doors

HEIGHT 26 | 29 | 32.75 | 35

DEPTH 16 | 23

WIDTH 24 | 27 | 30 | 33 | 36 | 39 | 42 | 48


B3400

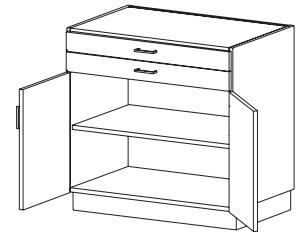
Door/Drawer Storage

- One adjustable shelf
- Four drawers
- Two hinged doors

26 | 29 | 32.75 | 35

16 | 23

24 | 27 | 30 | 33 | 36 | 39 | 42 | 48


B3450

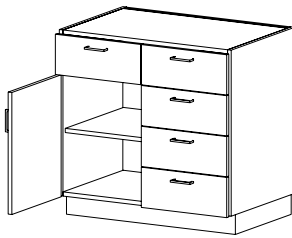
Door/Drawer Storage

- One adjustable shelf
- Two drawers
- Two hinged doors

26 | 29 | 32.75 | 35

16 | 23

24 | 27 | 30 | 33 | 36 | 39 | 42 | 48


CAT. NO B5410

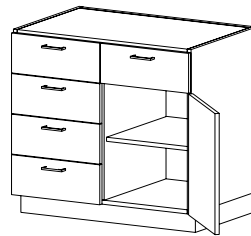
DESCRIPTION Drawer Storage

- One adjustable shelf
- Five drawers
- One hinged door

HEIGHT 26 | 29 | 32.75 | 35

DEPTH 16 | 23

WIDTH 24 | 27 | 30 | 33 | 36 | 39 | 42 | 48


B5420

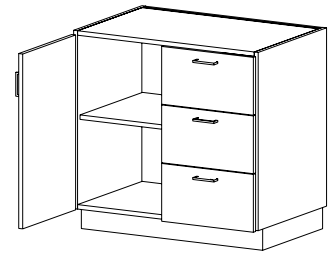
Door/Drawer Storage

- One adjustable shelf
- Five drawers
- One hinged door

26 | 29 | 32.75 | 35

16 | 23

24 | 27 | 30 | 33 | 36 | 39 | 42 | 48


B6310

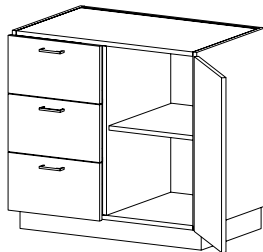
Door/Drawer Storage

- One adjustable shelf
- Three drawers
- One hinged door

26 | 29 | 32.75 | 35

16 | 23

24 | 27 | 30 | 33 | 36 | 39 | 42 | 48


CAT. NO B6320

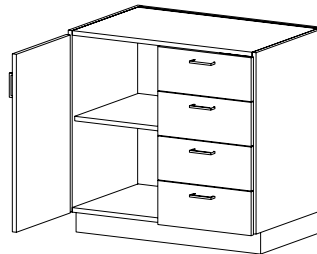
DESCRIPTION Door/Drawer Storage

- One adjustable shelf
- Three drawers
- One hinged door

HEIGHT 26 | 29 | 32.75 | 35

DEPTH 16 | 23

WIDTH 24 | 27 | 30 | 33 | 36 | 39 | 42 | 48


B6410

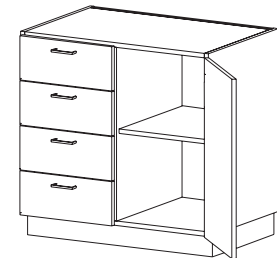
Door/Drawer Storage

- One adjustable shelf
- Four drawers
- One hinged door

26 | 29 | 32.75 | 35

16 | 23

24 | 27 | 30 | 33 | 36 | 39 | 42 | 48


B6420

Door/Drawer Storage

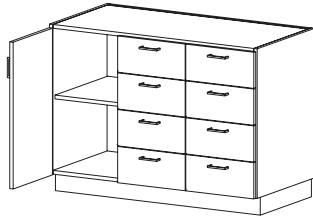
- One adjustable shelf
- Four drawers
- One hinged door

26 | 29 | 32.75 | 35

16 | 23

24 | 27 | 30 | 33 | 36 | 39 | 42 | 48

General Storage Base Cabinets (cont'd)


CAT. NO B6430

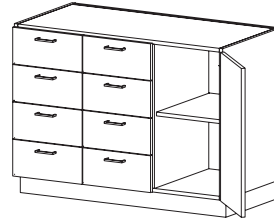
DESCRIPTION Door/Drawer Storage

- One adjustable shelf
- Eight drawers
- One hinged door

HEIGHT 26 | 29 | 32.75 | 35

DEPTH 16 | 23

WIDTH 24 | 27 | 30 | 33 | 36 | 39 | 42 | 48


B6440

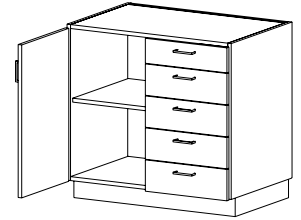
DESCRIPTION Door/Drawer Storage

- One adjustable shelf
- Eight drawers
- One hinged door

26 | 29 | 32.75 | 35

16 | 23

24 | 27 | 30 | 33 | 36 | 39 | 42 | 48


B6510

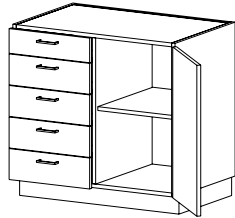
DESCRIPTION Door/Drawer Storage

- One adjustable shelf
- Five drawers
- One hinged door

26 | 29 | 32.75 | 35

16 | 23

24 | 27 | 30 | 33 | 36 | 39 | 42 | 48


CAT. NO B6520

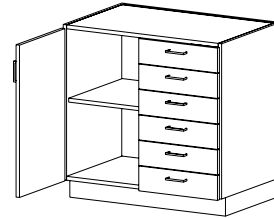
DESCRIPTION Drawer/Open Storage

- One adjustable shelves
- Five drawers
- One hinged door

HEIGHT 29 | 32.75 | 35

DEPTH 16 | 23

WIDTH 24 | 27 | 30 | 33 | 36 | 39 | 42 | 48


B6610

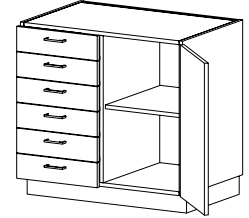
DESCRIPTION Door/Drawer Storage

- One adjustable shelves
- Six drawers
- One hinge d door

32.75 | 35

16 | 23

24 | 27 | 30 | 33 | 36 | 39 | 42 | 48


B6620

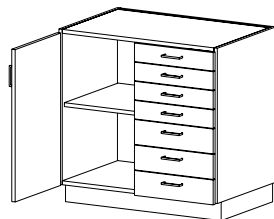
DESCRIPTION Door/Drawer Storage

- One adjustable shelf
- Six drawers
- Onen hinged door

32.75 | 35

16 | 23

24 | 27 | 30 | 33 | 36 | 39 | 42 | 48


CAT. NO B6710

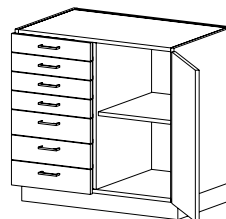
DESCRIPTION Door/Drawer Storage

- One adjustable shelf
- Seven drawers
- One hinged doors

HEIGHT 35

DEPTH 16 | 23

WIDTH 24 | 27 | 30 | 33 | 36 | 39 | 42 | 48


B6720

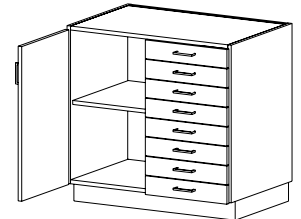
DESCRIPTION Door/Drawer Storage

- One adjustable shelf
- Seven drawers
- One hinged door

35

16 | 23

24 | 27 | 30 | 33 | 36 | 39 | 42 | 48


B6810

DESCRIPTION Door/Drawer Storage

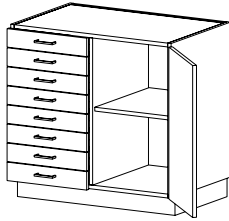
- One adjustable shelf
- Eight drawers
- One hinged doors

35

16 | 23

24 | 27 | 30 | 33 | 36 | 39 | 42 | 48

General Storage Base Cabinets (cont'd)

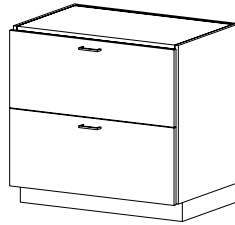

CAT. NO **B6820**

DESCRIPTION **Door/Drawer Storage**

- One adjustable shelf
- Eight drawers
- One hinged door

HEIGHT 35

DEPTH 16 | 23

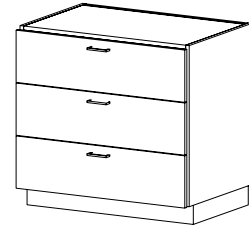
WIDTH 24 | 27 | 30 | 33 | 36 | 39 | 42 | 48

CAT. NO **B4020**

DESCRIPTION **Two Drawer Storage**

- Two drawers

HEIGHT 23 | 26 | 29 | 32.75 (ADA) | 35

DEPTH 16 | 23

WIDTH 15 | 18 | 21 | 24 | 27 | 30 | 33 | 36 | 39 | 42 | 48

CAT. NO **B4030**

DESCRIPTION **Three Drawer Storage**

- Three drawers

HEIGHT 23 | 26 | 29 | 32.75 (ADA) | 35

DEPTH 16 | 23

WIDTH 15 | 18 | 21 | 24 | 27 | 30 | 33 | 36 | 39 | 42 | 48

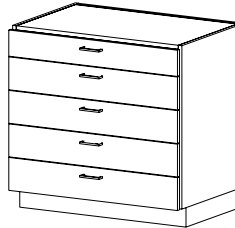
CAT. NO **B4040**

DESCRIPTION **Four Drawer Storage**

- Four drawers

HEIGHT 23 | 26 | 29 | 32.75 (ADA) | 35

DEPTH 16 | 23

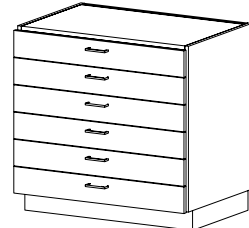
WIDTH 15 | 18 | 21 | 24 | 27 | 30 | 33 | 36 | 39 | 42 | 48

CAT. NO **B4050**

DESCRIPTION **Five Drawer Storage**

- Five drawers

HEIGHT 23 | 26 | 29 | 32.75 (ADA) | 35

DEPTH 16 | 23

WIDTH 15 | 18 | 21 | 24 | 27 | 30 | 33 | 36 | 39 | 42 | 48

CAT. NO **B4060**

DESCRIPTION **Six Drawer Storage**

- Six drawers

HEIGHT 32.75 (ADA) | 35

DEPTH 16 | 23

WIDTH 24 | 27 | 30 | 33 | 36 | 39 | 42 | 48

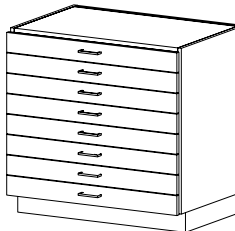
CAT. NO **B4070**

DESCRIPTION **Seven Drawer Storage**

- Seven drawers

HEIGHT 35

DEPTH 16 | 23

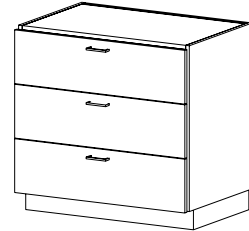
WIDTH 15 | 18 | 21 | 24 | 27 | 30 | 33 | 36 | 39 | 42 | 48

CAT. NO **B4080**

DESCRIPTION **Eight Drawer Storage**

- Eight drawers

HEIGHT 35

DEPTH 16 | 23

WIDTH 15 | 18 | 21 | 24 | 27 | 30 | 33 | 36 | 39 | 42 | 48

CAT. NO **B4130**

DESCRIPTION **Three Drawer Paper Storage**

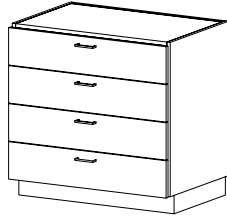
- Drawers feature paper retaining hoods and full extension drawer slides

HEIGHT 23 | 26 | 29 | 32.75 (ADA) | 35

DEPTH 23 | 29 | 35

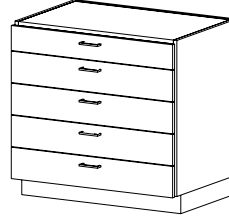
WIDTH 24 | 27 | 30 | 33 | 36 | 39 | 42 | 48

General Storage Base Cabinets (cont'd)


CAT. NO **B4140**
DESCRIPTION **Four Drawer Paper Storage**
 • Drawers feature paper retaining hoods and full extension drawer slides

HEIGHT 23 | 26 | 29 | 32.75 (ADA) | 35

DEPTH 23 | 29 | 35

WIDTH 24 | 27 | 30 | 33 | 36 | 39 | 42 | 48

B4150
Five Drawer Paper Storage
 • Drawers feature paper retaining hoods and full extension drawer slides

29 | 32.75 | 35

23 | 29 | 35

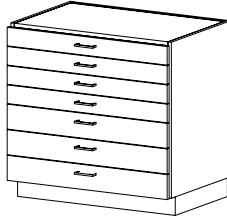
24 | 27 | 30 | 33 | 36 | 39 | 42 | 48


B4160
Six Drawer Paper Storage
 • Drawers feature paper retaining hoods and full extension drawer slides

32.75 | 35

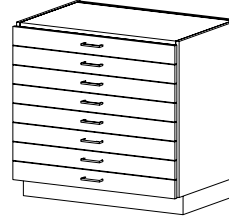
23 | 29 | 35

24 | 27 | 30 | 33 | 36 | 39 | 42 | 48


CAT. NO **B4170**
DESCRIPTION **Seven Drawer Paper Storage**
 • Drawers feature paper retaining hoods and full extension drawer slides

HEIGHT 32.75 | 35

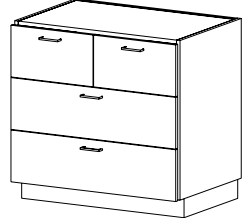
DEPTH 23 | 29 | 35

WIDTH 24 | 27 | 30 | 33 | 36 | 39 | 42 | 48

B4180
Eight Drawer Paper Storage
 • Drawers feature paper retaining hoods and full extension drawer slides

35

23 | 29 | 35

24 | 27 | 30 | 33 | 36 | 39 | 42 | 48


B4230
Four Drawer Storage
 • Four drawers

23 | 26 | 29 | 32.75 | 35

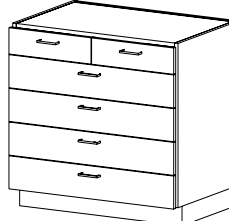
16 | 23

24 | 27 | 30 | 33 | 36 | 39 | 42 | 48


CAT. NO **B4240**
DESCRIPTION **Five Drawer Storage**
 • Five drawers

HEIGHT 26 | 29 | 32.75 | 35

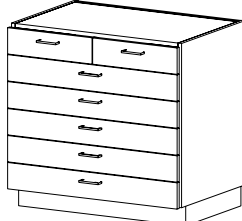
DEPTH 16 | 23

WIDTH 24 | 27 | 30 | 33 | 36 | 39 | 42 | 48

B4250
Six Drawer Storage
 • Six drawers

29 | 32.75 | 35

16 | 23

24 | 27 | 30 | 33 | 36 | 39 | 42 | 48

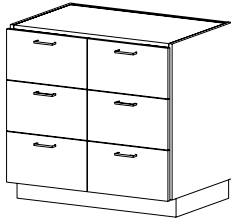

B4260
Seven Drawer Storage
 • Seven drawers

32.75 | 35

16 | 23

24 | 27 | 30 | 33 | 36 | 39 | 42 | 48

General Storage Base Cabinets (cont'd)


CAT. NO **B4330**
DESCRIPTION **Six Drawer Storage**
 • Six drawers

HEIGHT 23 | 26 | 29 | 32.75 | 35

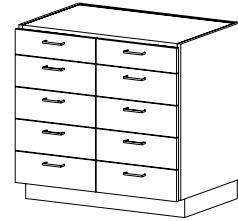
DEPTH 16 | 23

WIDTH 24 | 27 | 30 | 33 | 36 | 39 | 42 | 48

CAT. NO **B4340**
DESCRIPTION **Eight Drawer Storage**
 • Eight drawers

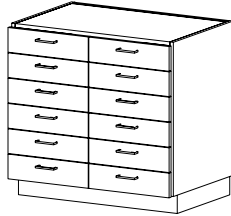
HEIGHT 23 | 26 | 29 | 32.75 | 35

DEPTH 16 | 23

WIDTH 24 | 27 | 30 | 33 | 36 | 39 | 42 | 48

CAT. NO **B4350**
DESCRIPTION **Ten Drawer Storage**
 • Ten drawers

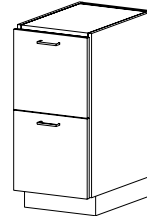
HEIGHT 23 | 26 | 29 | 32.75 | 35

DEPTH 16 | 23

WIDTH 24 | 27 | 30 | 33 | 36 | 39 | 42 | 48

CAT. NO **B4360**
DESCRIPTION **Twelve Drawer Storage**
 • Twelve drawers

HEIGHT 23 | 26 | 29 | 32.75 | 35

DEPTH 16 | 23

WIDTH 24 | 27 | 30 | 33 | 36 | 39 | 42 | 48

CAT. NO **B4500**
DESCRIPTION **File Drawer Storage**
 • Two file-size drawers
 • Hanging file folders not included

HEIGHT 29 | 32.75 | 35

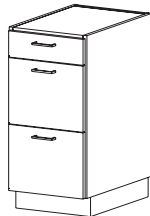
DEPTH 16 | 23

WIDTH 16 (letter) | 19 (legal)

CAT. NO **B4540**
DESCRIPTION **File Drawer Storage**
 • Three drawers including one file-size drawer
 • Hanging file folders not included

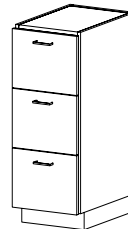
HEIGHT 29 | 32.75 | 35

DEPTH 16 | 23

WIDTH 16 (letter) | 19 (legal)

CAT. NO **B4560**
DESCRIPTION **File Drawer Storage**
 • Three drawers including two file-size drawers
 • Hanging file folders not included

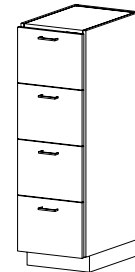
HEIGHT 29 | 32.75 | 35

DEPTH 16 | 23

WIDTH 16 (letter) | 19 (legal)

CAT. NO **B4570**
DESCRIPTION **File Drawer Storage**
 • Three file-size drawers
 • Hanging file folders not included

HEIGHT 43

DEPTH 23

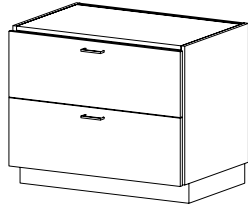
WIDTH 16 (letter) | 19 (legal)

CAT. NO **B4580**
DESCRIPTION **File Drawer Storage**
 • Four file-size drawers
 • Hanging file folders not included

HEIGHT 56

DEPTH 23

WIDTH 16 (letter) | 19 (legal)

General Storage Base Cabinets (cont'd)

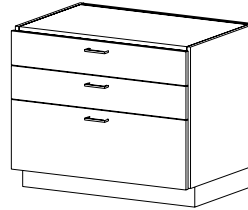

CAT. NO **B7500** (Letter and/or Legal)

DESCRIPTION **Lateral File Drawer Storage**

- Two file-size drawers
- Hanging file folders not included

HEIGHT 29 | 32.75 | 35

DEPTH 23

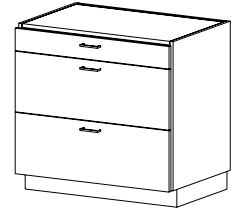
WIDTH 15 | 18 | 21 | 24 | 27 | 30 | 33 | 36 | 39
42 | 48

CAT. NO **B7540** (Letter and/or Legal)

DESCRIPTION **Lateral File Drawer Storage**

- Three drawers including one file-size drawer
- Hanging file folders not included

HEIGHT 29 | 32.75 | 35

DEPTH 23

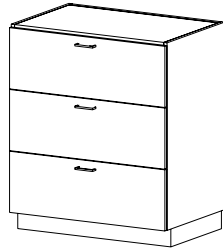
WIDTH 15 | 18 | 21 | 24 | 27 | 30 | 33 | 36 | 39
42 | 48

CAT. NO **B7560** (Letter and/or Legal)

DESCRIPTION **Lateral File Drawer Storage**

- Three drawers including two file-size drawers
- Hanging file folders not included

HEIGHT 29 | 32.75 | 35

DEPTH 23

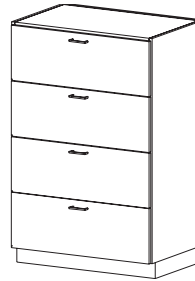
WIDTH 15 | 18 | 21 | 24 | 27 | 30 | 33 | 36 | 39
42 | 48

CAT. NO **B7570** (Letter and/or Legal)

DESCRIPTION **Lateral File Drawer Storage**

- Three file-size drawers
- Hanging file folders not included

HEIGHT 43

DEPTH 23

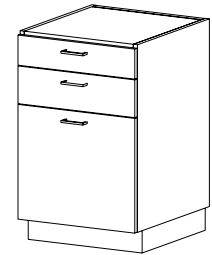
WIDTH 12 | 15 | 18 | 21 | 24 | 27 | 30 | 33 | 36

CAT. NO **B7580** (Letter and/or Legal)

DESCRIPTION **Lateral File Drawer Storage**

- Four file-size drawers
- Hanging file folders not included

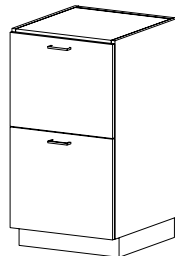
HEIGHT 56

DEPTH 23

WIDTH 12 | 15 | 18 | 21 | 24 | 27 | 30 | 33 | 36

CAT. NO **B5540**
DESCRIPTION **Oversized File/X-Ray Storage**

- Three drawers including one file-size drawer that holds 14" h x 18" w hanging files
- Hanging file folders not included

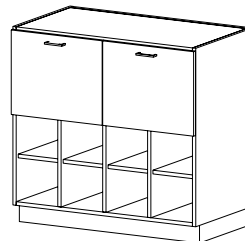
HEIGHT 36 | 39 | 42 | 48

DEPTH 23

CAT. NO **B5500**
DESCRIPTION **Oversized File/X-Ray Storage**

- Two file-size drawers hold 14" h x 18" w hanging files
- Hanging file folders not included

HEIGHT 42

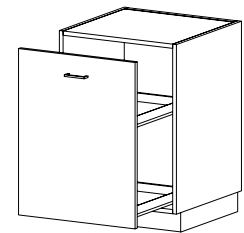
DEPTH 23

WIDTH 22

CAT. NO **B5550**
DESCRIPTION **Oversized File/X-Ray Storage**

- Two file-size drawers hold 14" h x 18" w hanging files
- Cubicle storage below w/ four adjustable shelves
- Hanging file folders not included

HEIGHT 42

DEPTH 23

WIDTH 43

CAT. NO **B3600**
DESCRIPTION **High Density Storage**

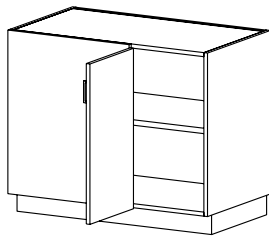
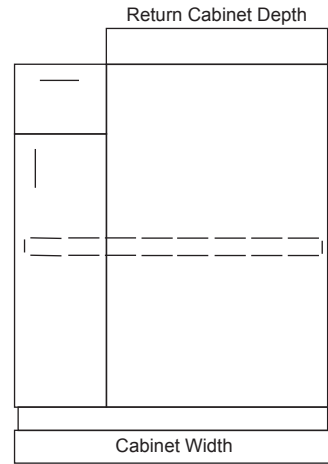
- Pull-out shelves incorporate a 1-1/2" high back and sides to prevent items from falling off

HEIGHT 30 | 32 | 34 | 36 | 39

DEPTH 23

WIDTH 12 | 15 | 18 | 21 | 24

Corner Base Cabinets


CAT. NO **B0210**
DESCRIPTION **Blind Corner Storage with Door**
 • One adjustable shelf
 • One hinged door

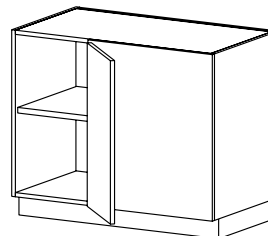
HEIGHT 23 | 26 | 29 | 32.75 | 35

DEPTH 16 | 23

WIDTH 33 | 36 | 39 | 42 | 45* | 48*

Specify Return Cabinet Depth (blank panel width)

* Not available in 16" depth


CAT. NO **B0220**
DESCRIPTION **Blind Corner Storage with Door**
 • One adjustable shelf
 • One hinged door

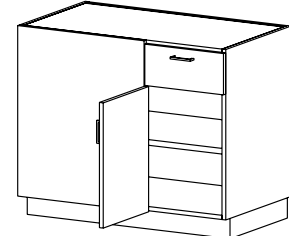
HEIGHT 23 | 26 | 29 | 32.75 | 35

DEPTH 16 | 23

WIDTH 33 | 36 | 39 | 42 | 45* | 48*

Specify Return Cabinet Depth (blank panel width)

* Not available in 16" depth


CAT. NO **B3210**
DESCRIPTION **Door/Drawer Blind Corner**
 • One adjustable shelf
 • One drawer and one hinged door

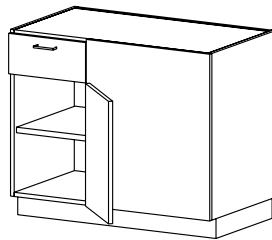
HEIGHT 23 | 26 | 29 | 32.75 | 35

DEPTH 16 | 23

WIDTH 33 | 36 | 39 | 42 | 45* | 48*

Specify Return Cabinet Depth (blank panel width)

* Not available in 16" depth


CAT. NO **B3220**
DESCRIPTION **Door/Drawer Blind Corner**
 • One adjustable shelf
 • One drawer and one hinged door

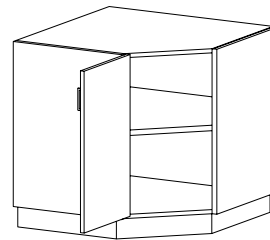
HEIGHT 26 | 29 | 32.75 | 35

DEPTH 16 | 23

WIDTH 33 | 36 | 39 | 42 | 45* | 48*

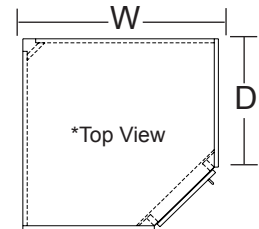
Specify Return Cabinet Depth (blank panel width)

* Not available in 16" depth


CAT. NO **X1210** (Hinged L)

DESCRIPTION **Diagonal Corner Storage with Door**
 • One adjustable shelf
 • One hinged door
For depth, specify adjacent cabinet depth.
HEIGHT 26 | 29 | 32.75 | 35

DEPTH 16 | 23

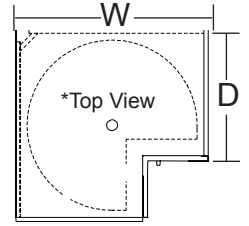
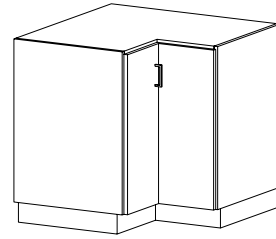
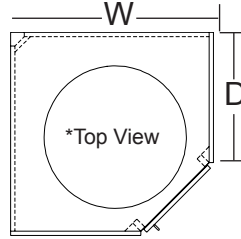
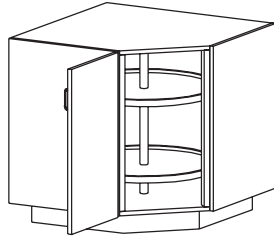
WIDTH 24 (16 dp. only) | 31 (23 dp. only)

CAT. NO **X1220** (Hinged R)

DESCRIPTION **Diagonal Corner Storage with Door**
 • One adjustable shelf
 • One hinged door
For depth, specify adjacent cabinet depth.
HEIGHT 26 | 29 | 32.75 | 35

DEPTH 16 | 23

WIDTH 24 (16 dp. only) | 31 (23 dp. only)

Corner Base Cabinets (cont'd)


CAT. NO **X1230** (Hinged L)

X1240 (Hinged R)

DESCRIPTION **Diagonal Corner Storage with Lazy Susan**

- Two revolving shelves
- One hinged door

CAT. NO **X1110** (Hinged L)

X1120 (Hinged R)

DESCRIPTION **Lazy Susan Corner Storage with Door**

- Two revolving shelves
 - Two hinged doors
- For depth, specify adjacent cabinet depth.*

HEIGHT 26 | 29 | 32.75 | 35

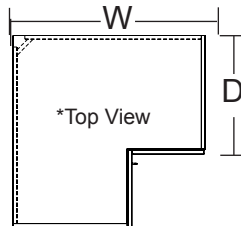
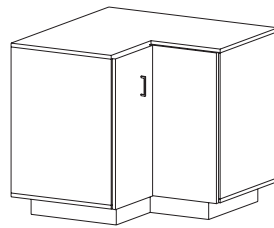
DEPTH 23

WIDTH 31

26 | 29 | 32.75 | 35

16 | 23

24 (16 dp. only) | 31 (23 dp. only)


CAT. NO **X1130** (Hinged L)

X1140 (Hinged R)

DESCRIPTION **Corner Storage w/Door**

- One adjustable shelf
- Two hinged doors

HEIGHT 26 | 29 | 32.75 | 35

DEPTH 16 | 23

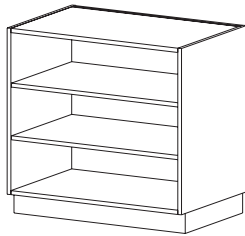
WIDTH 24 (16 dp. only) | 31 (23 dp. only)

Cubicle Storage Base Cabinets

Shelf Quantity Per Cabinet

Cubicle Storage Cabinets (B0030 - B1350)

		Cabinet Height				
		23"	26"	29"	32.75"	35"
# of Partitions	0	1	1	1	2	2
	1	2	2	2	4	4
	2	3	3	3	6	6
	3	4	4	4	8	8



CAT. NO **B0030**

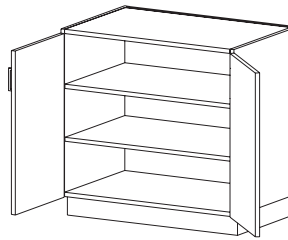
DESCRIPTION **Open Storage**
• fixed shelves

HEIGHT 23 | 26 | 29 | 32.75 | 35

DEPTH 12 | 15 | 22

WIDTH 15 | 18 | 21 | 24 | 27 | 30 | 33 | 36 | 39
42 | 45 | 48

*See chart above for shelf quantity



B0090

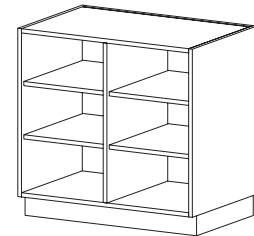
Storage with Doors
• fixed shelves

23 | 26 | 29 | 32.75 | 35

13 | 16 | 23

24 | 27 | 30 | 33 | 36 | 39 | 42 | 45 | 48

*See chart above for shelf quantity



B1100 (Adj. Shelves) **B1130** (Fxd. Shelves)

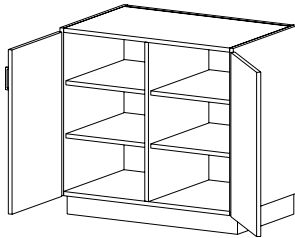
Open Cubicle Storage
• One fixed vertical partition

23 | 26 | 29 | 32.75 | 35

12 | 15 | 22

24 | 27 | 30 | 33 | 36 | 39 | 42 | 45 | 48

*See chart above for shelf quantity



CAT. NO **B1140** (Adj. Shelves) **B1150** (Fxd. Shelves)

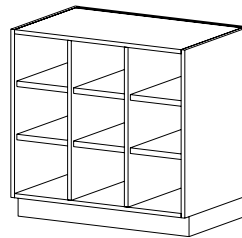
DESCRIPTION **Cubicle Storage with Doors**
• One fixed vertical partition
• Two hinged doors

HEIGHT 23 | 26 | 29 | 32.75 | 35

DEPTH 13 | 16 | 23

WIDTH 24 | 27 | 30 | 33 | 36 | 39 | 42 | 45 | 48

*See chart above for shelf quantity



B1200 (Adj. Shelves) **B1230** (Fxd. Shelves)

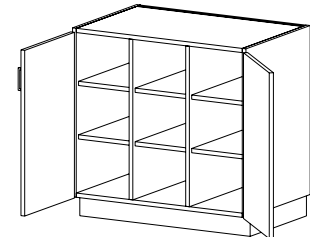
Open Cubicle Storage
• Two fixed vertical partitions

23 | 26 | 29 | 32.75 | 35

12 | 15 | 22

24 | 27 | 30 | 33 | 36 | 39 | 42 | 45 | 48

*See chart above for shelf quantity



B1240 (Adj. Shelves) **B1250** (Fxd. Shelves)

Cubicle Storage with Doors
• Two fixed vertical partitions
• Two hinged doors

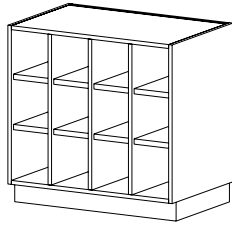
23 | 26 | 29 | 32.75 | 35

13 | 16 | 23

24 | 27 | 30 | 33 | 36 | 39 | 42 | 45 | 48

*See chart above for shelf quantity

Cubicle Storage Base Cabinets (cont'd)


CAT. NO **B1300** (Adj. Shelves) **B1330** (Fxd. Shelves)

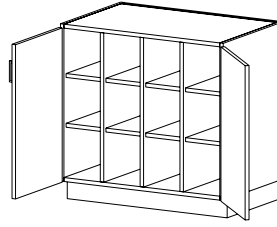
DESCRIPTION **Open Cubicle Storage**
 • Three fixed vertical partitions

HEIGHT 23 | 26 | 29 | 32.75 | 35

DEPTH 12 | 15 | 22

WIDTH 30 | 33 | 36 | 39 | 42 | 45 | 48

*See chart on previous page for shelf quantity


CAT. NO **B1340** (Adj. Shelves) **B1350** (Fxd. Shelves)

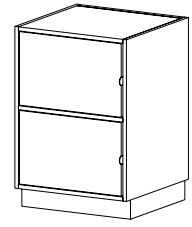
DESCRIPTION **Cubicle Storage with Doors**
 • Three fixed vertical partitions
 • Two hinged doors

HEIGHT 23 | 26 | 29 | 32.75 | 35

DEPTH 13 | 16 | 23

WIDTH 30 | 33 | 36 | 39 | 42 | 45 | 48

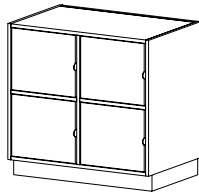
*See chart on previous page for shelf quantity


CAT. NO **B6000**
DESCRIPTION **Project Storage**
 • Two compartments
 • Inset doors with five knuckle hinges
 • Padlock hasp on each door

HEIGHT 23* | 26* | 29** | 32.75** | 35***

DEPTH 13 | 16 | 23

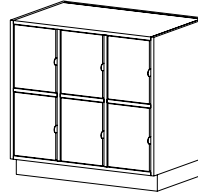
WIDTH 12 | 15 | 18 | 21 | 24

 * 23 & 26" height not available in a width greater than 15"
 ** 29 & 32.75" height not available in a width greater than 18"
 *** 35" height not available in a width greater than 21"

CAT. NO **B6200**
DESCRIPTION **Project Storage**
 • Four compartments
 • Inset doors with five knuckle hinges
 • Padlock hasp on each door

HEIGHT 23* | 26** | 29*** | 32.75*** | 35

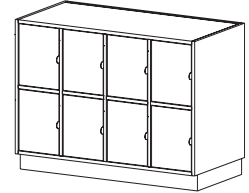
DEPTH 13 | 16 | 23

WIDTH 24 | 27 | 30 | 33 | 36 | 39 | 42

 * 23" height not available in a width greater than 30"
 ** 26" height not available in a width greater than 33"
 *** 29 & 32.75" height not available in a width greater than 39"

CAT. NO **B6300**
DESCRIPTION **Project Storage**
 • Six compartments
 • Inset doors with five knuckle hinges
 • Padlock hasp on each door

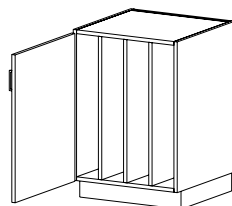
HEIGHT 23 | 26 | 29 | 32.75 | 35

DEPTH 13 | 16 | 23

WIDTH 30 | 33 | 36 | 39 | 42 | 45 | 48

CAT. NO **B6400**
DESCRIPTION **Project Storage**
 • Eight compartments
 • Inset doors with five knuckle hinges
 • Padlock hasp on each door

HEIGHT 23 | 26 | 29 | 32.75 | 35

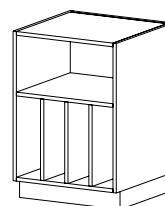
DEPTH 13 | 16 | 23

WIDTH 36 | 39 | 42 | 45 | 48

CAT. NO **B0410** (Hinged L) **B0420** (Hinged R)

DESCRIPTION **Vertical Divided Storage w/Door**
 • Three fixed vertical partitions
 • One hinged door

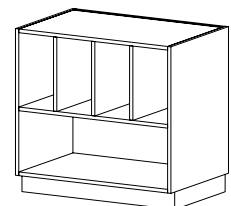
HEIGHT 23 | 25 | 29 | 32.75 | 35

DEPTH 16 | 23

WIDTH 15 | 18 | 21 | 24

CAT. NO **B1900**
DESCRIPTION **Vertical Divided Storage**
 • One fixed shelf with vertical partitions below
 • 24"w and 27"w – 3 partitions; 30"w and 33"w – 4 partitions; 36"w and 39"w – 5 partitions; 42"w and 45"w – 6 partitions; 48"w – 7 partitions

HEIGHT 23 | 25 | 29 | 32.75 | 35

DEPTH 15 | 22

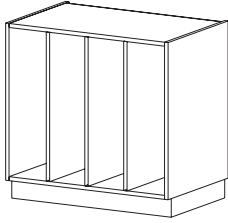
WIDTH 24 | 27 | 30 | 33 | 36 | 39 | 42 | 45 | 48

CAT. NO **B1700**
DESCRIPTION **Vertical Divided Storage**
 • Three fixed vertical partitions with open storage below

HEIGHT 23 | 25 | 29 | 32.75 | 35

DEPTH 15 | 22

WIDTH 24 | 27 | 30 | 33 | 36 | 39 | 42 | 45 | 48

Cubicle Storage Base Cabinets (cont'd)



CAT. NO B0400

DESCRIPTION Vertical Divided Storage
• Three fixed vertical partitions

HEIGHT 23 | 25 | 29 | 32.75 | 35

DEPTH 15 | 22

WIDTH 24 | 27 | 30 | 33 | 36 | 39 | 42 | 45 | 48

Folio Storage Base Cabinets

Shelf Quantity Per Cabinet

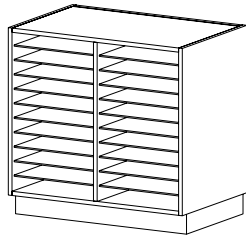
Horizontal Folio Storage Cabinets (B1600-B1660)

		Cabinet Height				
		23"	26"	29"	32.75"	35"
# of Partitions	1	12	12	16	16	20
	2	18	18	24	24	30
	3	24	24	32	32	40

Quantity of Dividers for Vertical Folio Storage (B1950)

# of Dividers	Cabinet Width												
	12"	15"	18"	21"	24"	27"	30"	33"	36"	39"	42"	45"	48"
	8	12	14	18	20	24	28	30	34	36	40	42	46

All folio storage base cabinets feature adjustable 1/4" hardboard shelves or dividers (not edged)



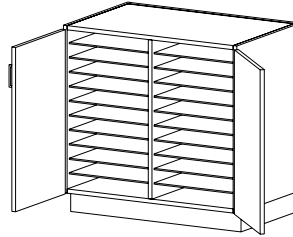
CAT. NO B1600

DESCRIPTION Open Folio Storage
 • Adjustable 1/4" shelves
 • One fixed vertical partition

HEIGHT 23 | 26 | 29 | 32.75 | 35

DEPTH 15 | 18 | 22

WIDTH 30 | 33 | 36



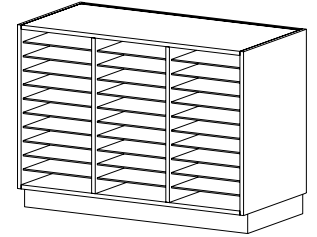
B1640

Folio Storage with Doors
 • Adjustable 1/4" shelves
 • One fixed vertical partition

23 | 26 | 29 | 32.75 | 35

16 | 19 | 23

30 | 33 | 36



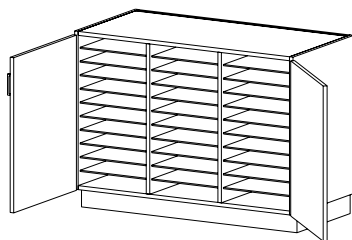
B1650

Open Folio Storage
 • Adjustable 1/4" shelves
 • Two fixed vertical partitions

23 | 26 | 29 | 32.75 | 35

15 | 18 | 22

36 | 39 | 42 | 45 | 48



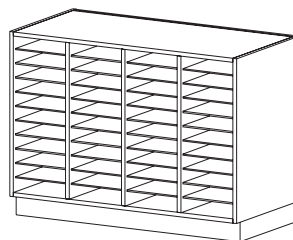
CAT. NO B1660

DESCRIPTION Folio Storage with Doors
 • Adjustable 1/4" shelves
 • Two fixed vertical partitions

HEIGHT 23 | 26 | 29 | 32.75 | 35

DEPTH 16 | 19 | 23

WIDTH 36 | 39 | 42 | 45 | 48



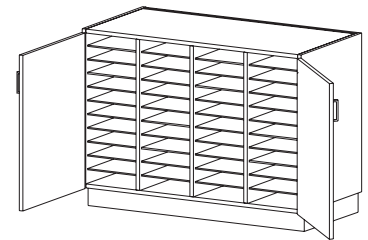
B1670

Open Folio Storage
 • Adjustable 1/4" shelves
 • Three fixed vertical partitions

23 | 26 | 29 | 32.75 | 35

15 | 18 | 22

36 | 39 | 42 | 45 | 48



B1680

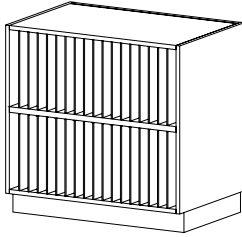
Folio Storage with Doors
 • Adjustable 1/4" shelves
 • Three fixed vertical partitions

23 | 26 | 29 | 32.75 | 35

16 | 19 | 23

36 | 39 | 42 | 45 | 48

Folio Storage Base Cabinets (cont'd)



CAT. NO B1950

DESCRIPTION Vertical Folio Storage
 • One fixed horizontal shelf
 • Removable 1/4" dividers – see table on "Shelf Quantity Per Cabinet" on page 17 for quantity

HEIGHT 35

DEPTH 15 | 18 | 22

WIDTH 12 | 15 | 18 | 21 | 24 | 27 | 30 | 33 | 36
 39 | 42 | 45 | 48

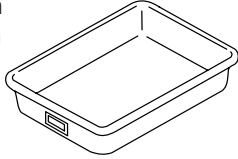
Tote Tray Storage Base Cabinets

All tote tray cabinets include high impact resistant polystyrene trays. Tote trays are supported by individual polycarbonate channels, mounted to the cabinet ends and partitions with two integral 5mm diameter pins and secured with one euro style screw. Height adjustable on 32mm (1-1/4") centers.

*Tote tray quantity varies by cabinet height. Consult the table at right for exact counts.

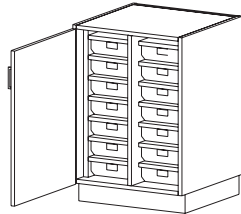
Tote Tray Sizes:

TT100 12½"w x 19"d x 4⅜"h
TT110 12½"w x 19"d x 3½"h
TT120 10"w x 19"d x 4"h
TT130 10"w x 19"d x 3½"h
TT140 14"w x 18"d x 3½"h
TT150 14"w x 18"d x 4"h



Tote Tray Quantity Per Cabinet

Cabinet Model No.	Cabinet Height							
	24	26	30	34	36	39	42	48
B1400	9	9	12	15	15	18	18	24
B1410	6	6	8	10	10	12	12	16
B1420	6	6	8	10	10	12	12	16
B1430	6	6	8	10	10	12	12	16
B1440	9	9	12	15	15	18	18	24
B1450	12	12	18	18	21	24	27	30
B1460	12	12	18	18	21	24	27	30
B1500	12	12	16	20	20	24	24	32
B1510	8	8	12	12	14	16	18	20
B1520	8	8	12	12	14	16	18	20
B1530	8	8	12	12	14	16	18	20
B1540	12	12	16	20	20	24	24	32
B1550	16	16	24	24	28	32	36	40
B1560	16	16	24	24	28	32	36	40



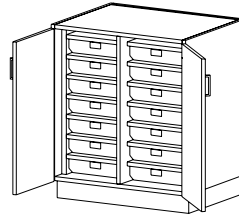
CAT. NO **B1510** (Hinged L) **B1520** (Hinged R)

DESCRIPTION Tote Tray Storage with Doors
 • One fixed vertical partition
 • Tote tray size: TT130

HEIGHT 24 | 26 | 30 | 34 | 36 | 39 | 42 | 48

DEPTH 24

WIDTH 24



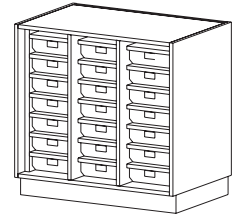
B1530

Tote Tray Storage with Doors
 • One fixed vertical partition
 • Tote tray size: TT110

24 | 26 | 30 | 34 | 36 | 39 | 42 | 48

24

30



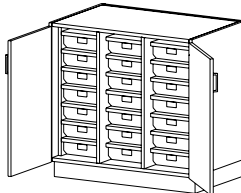
B1450

Open Tote Tray Storage
 • Two fixed vertical partitions
 • Tote tray size: 36"w – TT130, 48"w – TT140

24 | 26 | 30 | 34 | 36 | 39 | 42 | 48

24

36 | 48



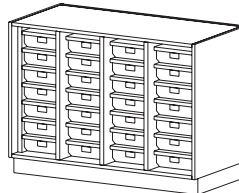
CAT. NO **B1460**

DESCRIPTION Tote Tray Storage with Doors
 • Two fixed vertical partitions
 • Tote tray size: 36"w – TT130, 48"w – TT140

HEIGHT 24 | 26 | 30 | 34 | 36 | 39 | 42 | 48

DEPTH 24

WIDTH 36 | 48



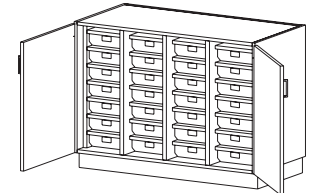
B1550

Open Tote Tray Storage
 • Three fixed vertical partitions
 • Tote tray size: TT130

24 | 26 | 30 | 34 | 36 | 39 | 42 | 48

24

48



B1560

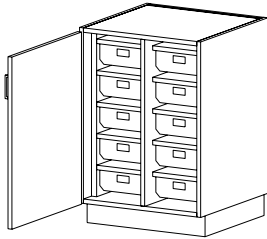
Tote Tray Storage with Doors
 • Three fixed vertical partitions
 • Tote tray size: TT130

24 | 26 | 30 | 34 | 36 | 39 | 42 | 48

24

48

Tote Tray Storage Base Cabinets (cont'd)


CAT. NO **B1410** (Hinged L) **B1420** (Hinged R)

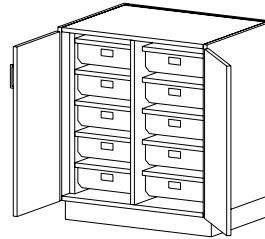
DESCRIPTION Tote Tray Storage with Door

- One fixed vertical partition
- Tote tray size: TT120

HEIGHT 24 | 26 | 30 | 34 | 36 | 39 | 42 | 48

DEPTH 24

WIDTH 24


B1430

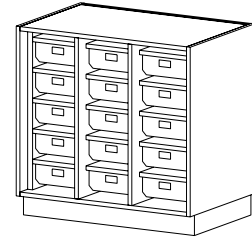
Tote Tray Storage with Doors

- One fixed vertical partition
- Tote tray size: TT100

24 | 26 | 30 | 34 | 36 | 39 | 42 | 48

24

30


B1400

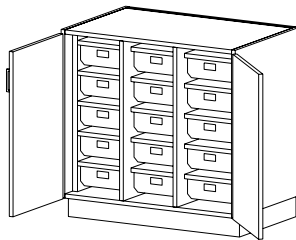
Open Tote Tray Storage

- Two fixed vertical partitions
- Tote tray size: 36" w – TT120, 48" w – TT150

24 | 26 | 30 | 34 | 36 | 39 | 42 | 48

24

36 | 48


CAT. NO **B1440**

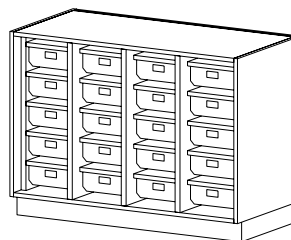
DESCRIPTION Tote Tray Storage with Doors

- Two fixed vertical partitions
- Tote tray size: 36" w – TT120, 48" w – TT150

HEIGHT 24 | 26 | 30 | 34 | 36 | 39 | 42 | 48

DEPTH 24

WIDTH 36 | 48


B1500

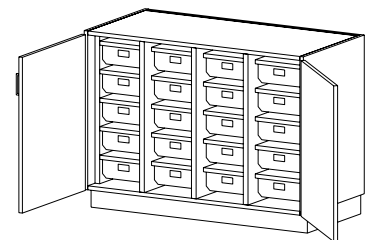
Open Tote Tray Storage

- Three fixed vertical partitions
- Tote tray size: TT120

24 | 26 | 30 | 34 | 36 | 39 | 42 | 48

24

48


B1540

Tote Tray Storage with Doors

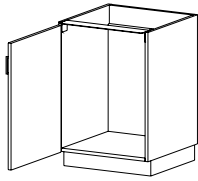
- Three fixed vertical partitions
- Tote tray size: TT120

24 | 26 | 30 | 34 | 36 | 39 | 42 | 48

24

48

Sink and Utility Base Cabinets



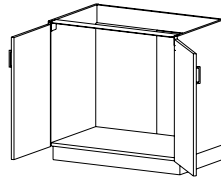
CAT. NO **B2010** (Hinged L) **B2020** (Hinged R)

DESCRIPTION Single Door Sink Cabinet

HEIGHT 23 | 26 | 29 | 32.75 | 35

DEPTH 16 | 23

WIDTH 15 | 18 | 21 | 24



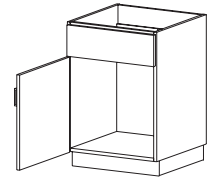
B2000

Sink Cabinet with Doors

23 | 26 | 29 | 32.75 | 35

16 | 23

24 | 27 | 30 | 33 | 36 | 39 | 42 | 45 | 48



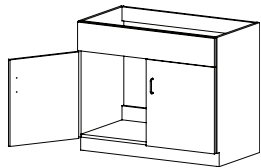
B2110 (Hinged L) **B2120** (Hinged R)

Single Door Sink Cabinet
• False front above door

23 | 26 | 29 | 32.75 | 35

16 | 23

15 | 18 | 21 | 24



CAT. NO **B2100**

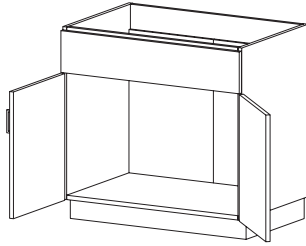
DESCRIPTION Sink Cabinet w/Doors
• False front above doors

HEIGHT 23 | 26 | 29 | 32.75 | 35

DEPTH 16 | 23

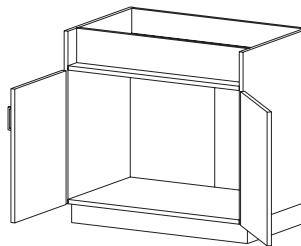
WIDTH 24 | 27 | 30 | 33 | 36 | 39 | 42 | 45 | 48

Sink and Utility Base Cabinets (cont'd)


CAT. NO **B2500**
DESCRIPTION **Cooktop Cabinet with Doors**
 • Range panel behind false front

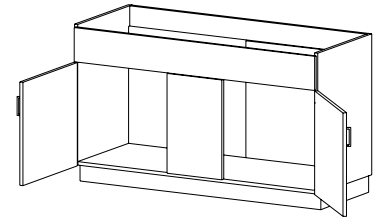
HEIGHT 29 | 32.75 | 35

DEPTH 23

WIDTH 30 | 33 | 36 | 39 | 42 | 45 | 48

CAT. NO **B2600**
DESCRIPTION **Fume Hood Cabinet with Doors**
 • Top false panel for controls and switches

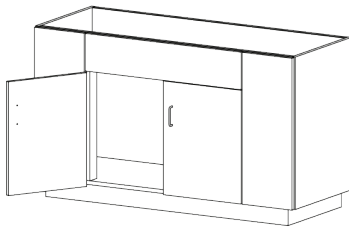
HEIGHT 29 | 32.75 | 35

DEPTH 23

WIDTH 30 | 36 | 42 | 48

CAT. NO **B2700**
DESCRIPTION **Wide Sink Cabinet with Doors**
 • False front above doors and center pilaster

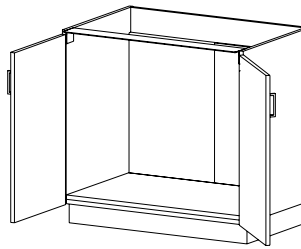
HEIGHT 29 | 32.75 | 35

DEPTH 23

WIDTH 52 | 58 | 64

CAT. NO **B2750**
DESCRIPTION **Sink Cabinet**
 • No shelf, w/kick returns

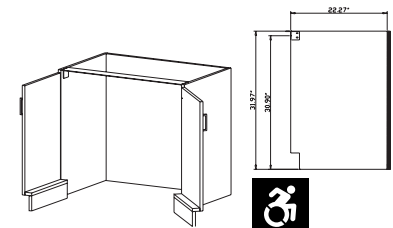
HEIGHT 35

DEPTH 23

WIDTH 46 | 52 | 58

CAT. NO **B2850**
DESCRIPTION **Sink Cabinet with Bottom Access with Doors**
 • Bottom panel is removable for the installation of foot pedal faucet controls

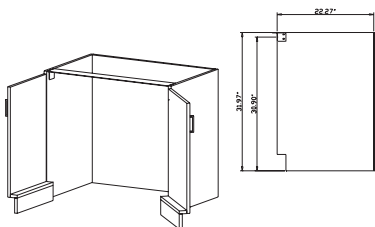
HEIGHT 26 | 29 | 32.75 | 35

DEPTH 23

WIDTH 24 | 27 | 30 | 33 | 36 | 39 | 42 | 45 | 48

CAT. NO **B2800**
DESCRIPTION **Wheelchair Accessible Sink Cabinet with Doors**
 • No bottom
 • No removable back
 • Metal toe kicks

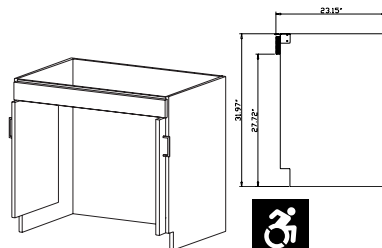
HEIGHT 32.75

DEPTH 23

WIDTH 36 | 39 | 42 | 45 | 48

CAT. NO **B2800**
DESCRIPTION **Sink Cabinet with Doors**
 • No bottom
 • Metal toe kicks

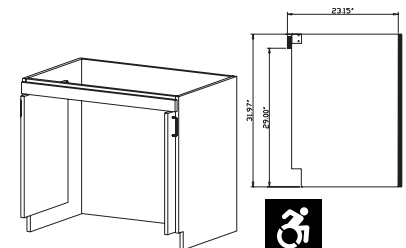
HEIGHT 26 | 29 | 32.75 | 35

DEPTH 23

WIDTH 30 | 33 | 36 | 39 | 42

CAT. NO **D1050**
DESCRIPTION **Wheelchair Accessible Vanity with Doors**
 • Pocket doors slide into cabinet
 • No bottom
 • No removable back

HEIGHT 32.75

DEPTH 23

WIDTH 36 | 39 | 42

CAT. NO **D1150**
DESCRIPTION **Wheelchair Accessible Sink Cabinet with Doors**
 • Pocket doors slide into cabinet
 • No bottom
 • No removable back

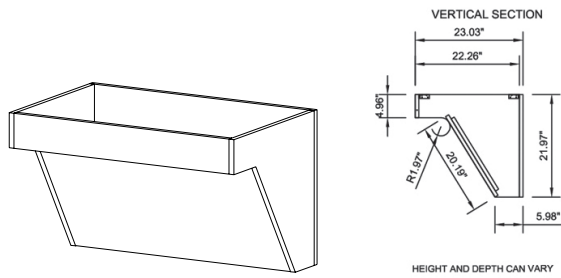
HEIGHT 32.75

DEPTH 23

WIDTH 36 | 39 | 42

*24 deep not available in width greater than 42"

Sink and Utility Base Cabinets (cont'd)



CAT. NO B2050

DESCRIPTION

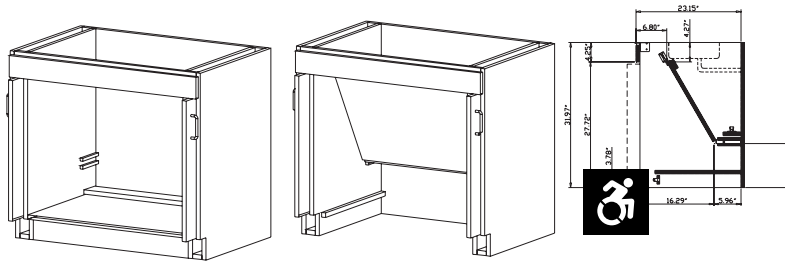
- Vanity**
- Removable angled panel allows access to plumbing
 - No removable back

HEIGHT 22

DEPTH 23

WIDTH 24 | 27 | 30 | 33 | 36* | 39* | 42* | 45* | 48*

* ADA Compliant



CAT. NO D1060

DESCRIPTION

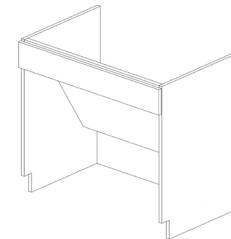
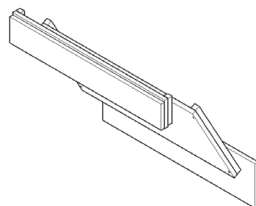
- Wheelchair Accessible Vanity with Doors**
- Pocket doors slide into cabinet
 - Cabinet can be converted from typical style pocket door sink cabinet to ADA accessible vanity. No tools required for conversion.
 - Inside width dimensions are different due to interior end panels.
 - No removable back

HEIGHT 26 | 29 | 32.75* | 35

DEPTH 23

WIDTH 30 | 33 | 36* | 39* | 42*

* ADA Compliant



CAT. NO D1010

DESCRIPTION

Knee Space Sink Panel

HEIGHT 27

DEPTH 23

WIDTH 30 | 33 | 36 | 39 | 42 | 45 | 48

D1020

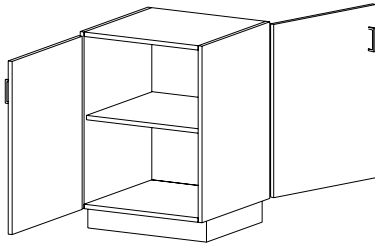
Knee Space Sink Panel with End Panels

27

23

30 | 33 | 36 | 39 | 42 | 45 | 48

Double-Sided Base Cabinets



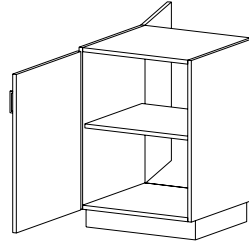
CAT. NO **B0510** (Hinged L) **B0520** (Hinged R)

DESCRIPTION **Double-Sided Storage with Doors**
 • One adjustable shelf
 • Two hinged doors

HEIGHT 23 | 26 | 29 | 32.75 | 35

DEPTH 17 | 24

WIDTH 24 | 27 | 30 | 33 | 36 | 39 | 42 | 45 | 48



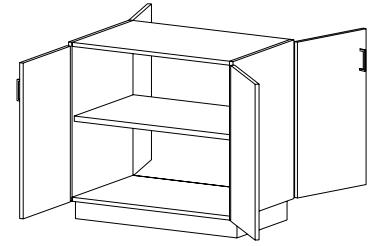
CAT. NO **B0530** (Hinged L/Hinged R)

DESCRIPTION **Double-Sided Storage with Doors**
 • One adjustable shelf
 • Two hinged doors

HEIGHT 23 | 26 | 29 | 32.75 | 35

DEPTH 17 | 24

WIDTH 15 | 18 | 21 | 24



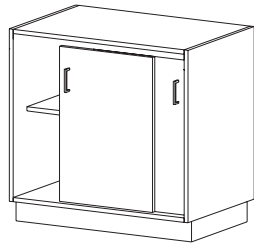
CAT. NO **B0500**

DESCRIPTION **Double-Sided Storage with Doors**
 • One adjustable shelf
 • Four hinged doors

HEIGHT 23 | 26 | 29 | 32.75 | 35

DEPTH 17 | 24

WIDTH 24 | 27 | 30 | 33 | 36 | 39 | 42 | 45 | 48



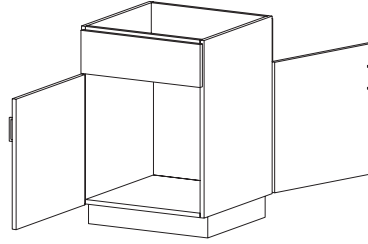
CAT. NO **B0540**

DESCRIPTION **Double-Sided Sliding Door Storage**
 • Adjustable shelf

HEIGHT 23 | 26 | 29 | 32.75 | 35

DEPTH 15 | 22

WIDTH 24 | 27 | 30 | 33 | 36 | 39 | 42 | 45 | 48



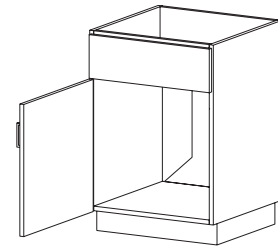
CAT. NO **B2910** (Hinged L) **B2920** (Hinged R)

DESCRIPTION **Double-Sided Sink Cabinet**
 • Two hinged doors

HEIGHT 23 | 26 | 29 | 32.75 | 35

DEPTH 17 | 24

WIDTH 15 | 18 | 21 | 24



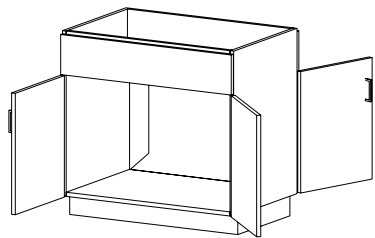
CAT. NO **B2930** (Hinged L/Hinged R)

DESCRIPTION **Double-Sided Sink Cabinet**
 • Two hinged doors

HEIGHT 23 | 26 | 29 | 32.75 | 35

DEPTH 17 | 24

WIDTH 15 | 18 | 21 | 24



CAT. NO **B2900**

DESCRIPTION **Double-Sided Sink Cabinet with Doors**
 • Four hinged doors

HEIGHT 23 | 26 | 29 | 32.75 | 35

DEPTH 17 | 24

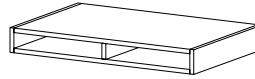
WIDTH 24 | 27 | 30 | 33 | 36 | 39 | 42 | 45 | 48

Knee-Space Cabinets


CAT. NO **X2000**
DESCRIPTION Book Box

HEIGHT 04

DEPTH 15 | 22

WIDTH 18 | 21 | 24 | 27 | 30

CAT. NO **X2070**
DESCRIPTION Divided Book Box

HEIGHT 04

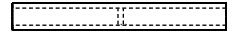
DEPTH 15 | 22

WIDTH 24 | 27 | 30 | 33 | 36 | 39 | 42 | 45 | 48

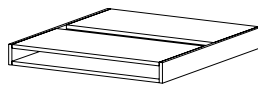
CAT. NO **X2100**
DESCRIPTION Double-Sided Book Box

HEIGHT 04

DEPTH 46 | 52 | 58

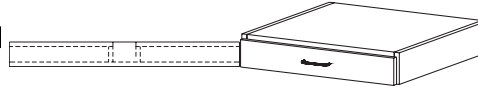
WIDTH 18 | 21 | 24 | 27 | 30


Side View


CAT. NO **X2110**
DESCRIPTION Double-Sided Book Box with Center Chase

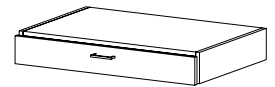
HEIGHT 04

DEPTH 46 | 52 | 58

WIDTH 18 | 21 | 24 | 27 | 30

CAT. NO **B4740**
DESCRIPTION Single Knee-Space Drawer

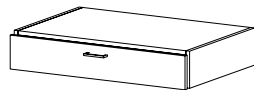
HEIGHT 03.75

DEPTH 16 | 23

WIDTH 24 | 27 | 30

CAT. NO **B4750**
DESCRIPTION Single Knee-Space Drawer

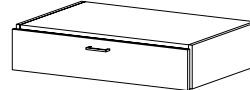
HEIGHT 05

DEPTH 16 | 23

WIDTH 24 | 27 | 30

CAT. NO **B4760**
DESCRIPTION Single Knee-Space Drawer

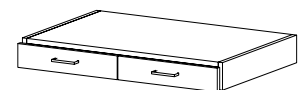
HEIGHT 07

DEPTH 16 | 23

WIDTH 24 | 27 | 30

CAT. NO **B4770**
DESCRIPTION Single Knee-Space Drawer

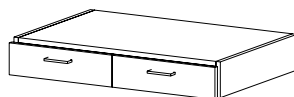
HEIGHT 08

DEPTH 16 | 23

WIDTH 24 | 27 | 30

CAT. NO **B4840**
DESCRIPTION Double Knee-Space Drawer

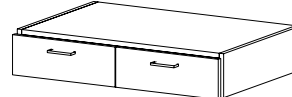
HEIGHT 03.75

DEPTH 16 | 23

WIDTH 24 | 27 | 30 | 33 | 36 | 39 | 42 | 45 | 48

CAT. NO **B4850**
DESCRIPTION Double Knee-Space Drawer

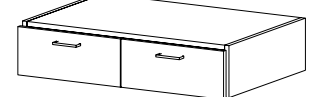
HEIGHT 05

DEPTH 16 | 23

WIDTH 24 | 27 | 30 | 33 | 36 | 39 | 42 | 45 | 48

CAT. NO **B4860**
DESCRIPTION Double Knee-Space Drawer

HEIGHT 07

DEPTH 16 | 23

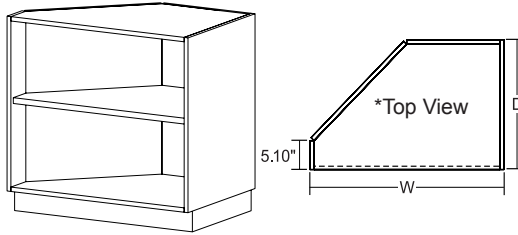
WIDTH 24 | 27 | 30 | 33 | 36 | 39 | 42 | 45 | 48

CAT. NO **B4870**
DESCRIPTION Double Knee-Space Drawer

HEIGHT 08

DEPTH 16 | 23

WIDTH 24 | 27 | 30 | 33 | 36 | 39 | 42 | 45 | 48

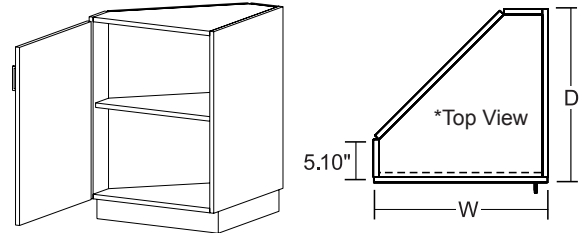
Angled Back Base Cabinets


CAT. NO B9200
DESCRIPTION

- Open Angled Back Storage**
- One adjustable shelf
 - Left rear corner at 45° angle

HEIGHT 23 | 26 | 29 | 32.75 | 35

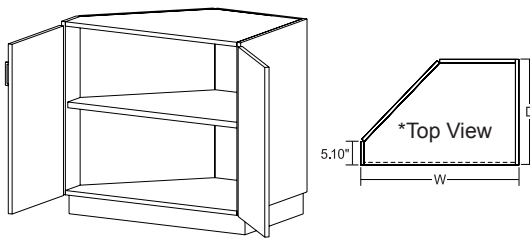
DEPTH 15 | 22

WIDTH 24 | 27 | 30 | 33 | 36 | 39 | 42 | 45 | 48

B9210 (Hinged L)
B9220 (Hinged R)
Angled Back Storage with Door

- One adjustable shelf
- One hinged door
- Left rear corner at 45° angle

HEIGHT 23 | 26 | 29 | 32.75 | 35

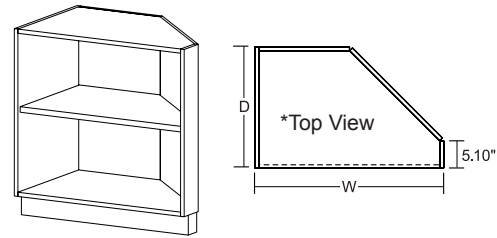
DEPTH 16 | 23

WIDTH 24

CAT. NO B9240
DESCRIPTION

- Angled Back Storage with Doors**
- One adjustable shelf
 - Two hinged doors
 - Left rear corner at 45° angle

HEIGHT 23 | 26 | 29 | 32.75 | 35

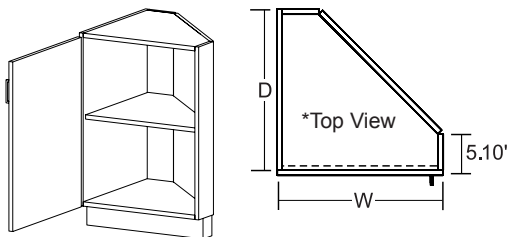
DEPTH 16 | 23

WIDTH 24 | 27 | 30 | 33 | 36 | 39 | 42 | 45 | 48

B9300
Open Angled Back Storage

- One adjustable shelf
- Right rear corner at 45° angle

HEIGHT 23 | 26 | 29 | 32.75 | 35

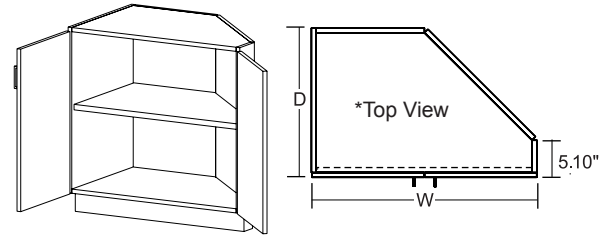
DEPTH 15 | 22

WIDTH 24 | 27 | 30 | 33 | 36 | 39 | 42 | 45 | 48

CAT. NO B9310 (Hinged L)
B9320 (Hinged R)
DESCRIPTION

- Angled Back Storage with Door**
- One adjustable shelf
 - One hinged door
 - Right rear corner at 45° angle

HEIGHT 23 | 26 | 29 | 32.75 | 35

DEPTH 16 | 23

WIDTH 24

B9340
Angled Back Storage w/Doors

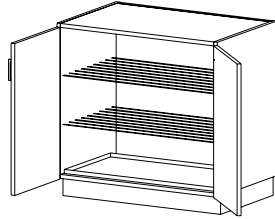
- One adjustable shelf
- Two hinged doors
- Right rear corner at 45° angle

HEIGHT 23 | 26 | 29 | 32.75 | 35

DEPTH 16 | 23

WIDTH 24 | 27 | 30 | 33 | 36 | 39 | 42 | 45 | 48

Special Purpose Base Cabinets

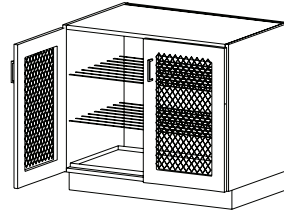

CAT. NO **B0260**

DESCRIPTION **Damp Storage with Doors**

- Two adjustable vinyl-coated wire shelves
- One metal drip tray

HEIGHT 29 | 32.75 | 35

DEPTH 23

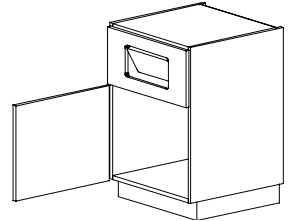
WIDTH 24 | 30 | 36 | 42 | 48

CAT. NO **B0280**

DESCRIPTION **Project Drying Cabinet with Doors**

- Two adjustable vinyl-coated wire shelves
- One metal drip tray
- Expanded metal doors

HEIGHT 29 | 32.75 | 35

DEPTH 23

WIDTH 24 | 30 | 36 | 42 | 48

CAT. NO **B3350** (Hinged L) **B3360** (Hinged R)

DESCRIPTION **Trash Storage with Door**

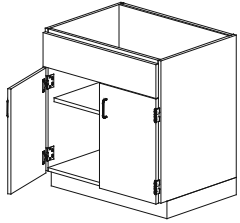
- One hinged door
- False front fixed at 285mm
- Spring loaded flipper door

HEIGHT 26 | 29 | 32.75 | 35

DEPTH 16 | 23

WIDTH 15 | 18 | 21 | 24

Acid Storage Base Cabinets

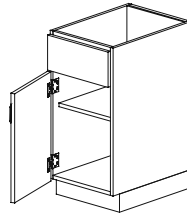

CAT. NO **SC210**
DESCRIPTION
Acid Storage

- Polypropylene lined, w/epoxy coated ventilated metal shelf and stainless steel hardware with flush top panel

HEIGHT 32.75 (ADA) | 35 (Standing)

DEPTH 23

WIDTH 30 | 36 | 42 | 48

WIDTH: MM 762 | 914 | 1067 | 1219

SC211 (Hinged L) **SC212** (Hinged R)

Acid Storage

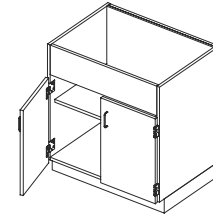
- Polypropylene lined, w/epoxy coated ventilated metal shelf and stainless steel hardware with flush top panel

29 | 32.75 | 35

23

18 | 24

457 | 610


SC260
Acid Storage

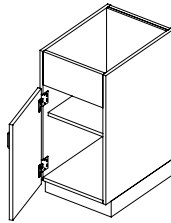
- Polypropylene lined, w/epoxy coated ventilated metal shelf and stainless steel hardware with recessed top panel

32.75 (ADA) | 35 (Standing)

23

30 | 36 | 42 | 48

762 | 914 | 1067 | 1219


CAT. NO **SC261** (Hinged L) **SC262** (Hinged R)

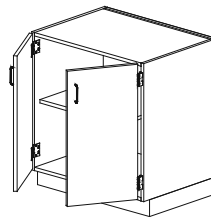
DESCRIPTION
Acid Storage

- Polypropylene lined, w/epoxy coated ventilated metal shelf and stainless steel hinges w/recessed top panel

HEIGHT 32.75 (ADA) | 35 (Standing)

DEPTH 23

WIDTH 18 | 24

WIDTH: MM 457 | 610

SC230
Acid Storage

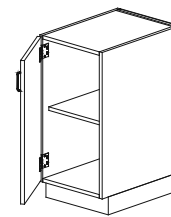
- Polypropylene lined, w/epoxy coated ventilated metal shelf and stainless steel hinges

32.75 (ADA) | 35 (Standing)

23

30 | 36 | 42 | 48

762 | 914 | 1067 | 1219


SC231 (Hinged L) **SC232** (Hinged R)

Acid Storage

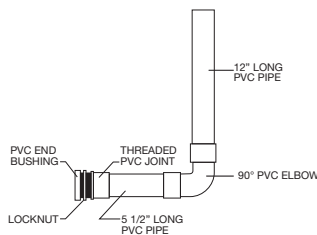
- Polypropylene lined, w/epoxy coated ventilated metal shelf and stainless steel hinges

32.75 (ADA) | 35 (Standing)

23

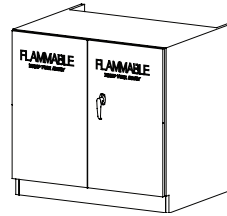
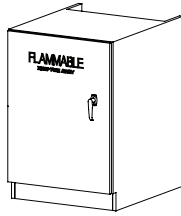
18 | 24

457 | 610


CAT. NO **SCV00**
DESCRIPTION

Vent Kit

Wood Flammable Storage Base Cabinets



CAT. NO **SC311** (Hinged L) **SC312** (Hinged R)

DESCRIPTION **Wood Flammable Storage Cabinet (Manual Closing)**

- Doors are made to match the wood veneer species of your project.
- Not UL Listed

HEIGHT 28 | 35

DEPTH 18 | 22

WIDTH 24

SC310

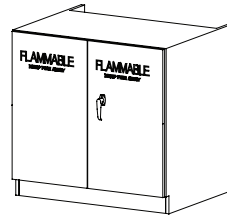
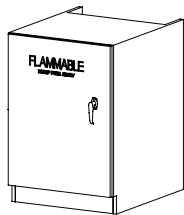
Wood Flammable Storage Cabinet (Manual Closing)

- Double doors are made to match the wood veneer species of your project.
- Not UL Listed

HEIGHT 28 | 35

DEPTH 18 | 22

WIDTH 30 | 36



CAT. NO **SC311-SC** (Hinged L) **SC312-SC** (Hinged R)

DESCRIPTION **UL Listed Wood Flammable Storage Cabinet (Self Closing/Latching)**

- Doors are made to match the wood veneer species of your project.

HEIGHT 28 | 35

DEPTH 18 | 22

WIDTH 24

SC310-SC

UL Listed Wood Flammable Storage Cabinet (Self Closing/Latching)

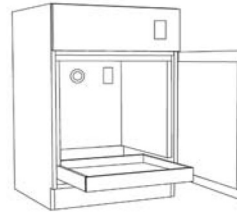
- Double doors are made to match the wood veneer species of your project.

HEIGHT 28 | 35

DEPTH 18 | 22

WIDTH 30 | 36

Vacuum Pump Storage Base Cabinets


CAT. NO **BVC10** (Hinged L)

CAT. NO **BVC20** (Hinged R)

CAT. NO **BVC00**
DESCRIPTION
Vacuum Pump Storage Cabinet

- Lined with 1" sound deadening foam material
- One pull out shelf with polypropylene lined bottom
- One vent outlet in back
- Switched receptacle 120V

Vacuum Pump Storage Cabinet

- Lined with 1" sound deadening foam material
- One pull out shelf with polypropylene lined bottom
- One vent outlet in back
- Switched receptacle 120V

Vacuum Pump Storage Cabinet

- Double doors
- Lined with 1" sound deadening foam material
- One pull out shelf with polypropylene lined bottom
- One vent outlet in back
- Switched receptacle 120V

HEIGHT 32.75 (ADA) | 35 (Standing)

32.75 (ADA) | 35 (Standing)

32.75 (ADA) | 35 (Standing)

DEPTH 23

23

23

WIDTH 24

24

30 | 36

Base Index

General Information	BC-2	B4330	Six Drawer Storage	BC-10	
Base Cabinet Dimensions	BC-2	B4340	Eight Drawer Storage	BC-10	
General Storage Base Cabinets	BC-3	B4350	Ten Drawer Storage	BC-10	
B0000	Open Storage	BC-3	B4360	Twelve Drawer Storage	BC-10
B0110	Storage with Door	BC-3	B4500	File Drawer Storage	BC-10
B0120	Storage with Door	BC-3	B4540	File Drawer Storage	BC-10
B0100	Storage with Doors	BC-3	B4560	File Drawer Storage	BC-10
B0840	Sliding Door Storage	BC-3	B4570	File Drawer Storage	BC-10
B0860	Sliding Glazed Door Storage	BC-3	B4580	File Drawer Storage	BC-10
B0310	Roll-Out Storage with Door	BC-3	B7500	Lateral File Drawer Storage	BC-11
B0320	Roll-Out Storage with Door	BC-3	B7540	Lateral File Drawer Storage	BC-11
B0340	Roll-Out Storage with Doors	BC-3	B7560	Lateral File Drawer Storage	BC-11
B0360	Roll-Out Storage with Doors	BC-3	B7570	Lateral File Drawer Storage	BC-11
B1000	Open Storage	BC-3	B7580	Lateral File Drawer Storage	BC-11
B1040	Storage with Doors	BC-4	B5540	Oversized File/X-Ray Storage	BC-11
B3050	Open/Drawer Storage	BC-4	B5500	Oversized File/X-Ray Storage	BC-11
B3510	Door/Book Box Storage	BC-4	B5550	Oversized File/X-Ray Storage	BC-11
B3520	Door/Book Box Storage	BC-4	B3600	High Density Storage	BC-11
B3500	Door/Book Box Storage	BC-4	Corner Base Cabinets	BC-12	
B3110	Door/Drawer Storage	BC-4	B0210	Blind Corner Storage with Door	BC-12
B3120	Door/Drawer Storage	BC-4	B0220	Blind Corner Storage with Door	BC-12
B3070	Door Storage	BC-4	B3210	Door/Drawer Blind Corner	BC-12
B3060	Door Storage	BC-4	B3220	Door/Drawer Blind Corner	BC-12
B3000	Door/Drawer Storage	BC-4	X1210	Diagonal Corner Storage with Door	BC-12
B3010	Door Storage	BC-4	X1220	Diagonal Corner Storage with Door	BC-12
B3150	Open/Drawer Storage	BC-4	X1230	Diagonal Corner Storage with Lazy Susan	BC-13
B3100	Door/Drawer Storage	BC-5	X1240	Diagonal Corner Storage with Lazy Susan	BC-13
B3020	Door Storage	BC-5	X1110	Lazy Susan Corner Storage with Door	BC-13
B3030	Door/Drawer Storage	BC-5	X1120	Lazy Susan Corner Storage with Door	BC-13
B3040	Drawer/Open Storage	BC-5	X1130	Corner Storage w/Door	BC-13
B3160	Door/Drawer Storage	BC-5	X1140	Corner Storage w/Door	BC-13
B3170	Door/Drawer Storage with Pull-Out Writing Surface	BC-5	Cubicle Storage Base Cabinets	BC-14	
B3310	Door/Drawer Storage with Pull-Out Writing Surface	BC-5	B0030	Open Storage	BC-14
B3320	Door/Drawer Storage	BC-5	B0090	Storage with Doors	BC-14
B3300	Door/Drawer Storage	BC-5	B1100	Open Cubicle Storage	BC-14
B3410	Door/Drawer Storage	BC-5	B1130	Open Cubicle Storage	BC-14
B3420	Door/Drawer Storage	BC-5	B1140	Cubicle Storage with Doors	BC-14
B3430	Door/Drawer Storage	BC-5	B1150	Cubicle Storage with Doors	BC-14
B3440	Door/Drawer Storage	BC-6	B1200	Open Cubicle Storage	BC-14
B3400	Door/Drawer Storage	BC-6	B1230	Open Cubicle Storage	BC-14
B3450	Door/Drawer Storage	BC-6	B1240	Cubicle Storage with Doors	BC-14
B5410	Drawer Storage	BC-6	B1250	Cubicle Storage with Doors	BC-14
B5420	Door/Drawer Storage	BC-6	B1300	Open Cubicle Storage	BC-15
B6310	Door/Drawer Storage	BC-6	B1330	Open Cubicle Storage	BC-15
B6320	Door/Drawer Storage	BC-6	B1340	Cubicle Storage with Doors	BC-15
B6410	Door/Drawer Storage	BC-6	B1350	Cubicle Storage with Doors	BC-15
B6420	Door/Drawer Storage	BC-6	B6000	Project Storage	BC-15
B6430	Door/Drawer Storage	BC-7	B6200	Project Storage	BC-15
B6440	Door/Drawer Storage	BC-7	B6300	Project Storage	BC-15
B6510	Door/Drawer Storage	BC-7	B6400	Project Storage	BC-15
B6520	Drawer/Open Storage	BC-7	B0410	Vertical Divided Storage w/Door	BC-15
B6610	Door/Drawer Storage	BC-7	B0420	Vertical Divided Storage w/Door	BC-15
B6620	Door/Drawer Storage	BC-7	B1900	Vertical Divided Storage	BC-15
B6710	Door/Drawer Storage	BC-7	B1700	Vertical Divided Storage	BC-15
B6720	Door/Drawer Storage	BC-7	B0400	Vertical Divided Storage	BC-16
B6810	Door/Drawer Storage	BC-7	Folio Storage Base Cabinets	BC-17	
B6820	Door/Drawer Storage	BC-8	B1600	Open Folio Storage	BC-17
B4020	Two Drawer Storage	BC-8	B1640	Folio Storage with Doors	BC-17
B4030	Three Drawer Storage	BC-8	B1650	Open Folio Storage	BC-17
B4040	Four Drawer Storage	BC-8	B1660	Folio Storage with Doors	BC-17
B4050	Five Drawer Storage	BC-8	B1670	Open Folio Storage	BC-17
B4060	Six Drawer Storage	BC-8	B1680	Folio Storage with Doors	BC-17
B4070	Seven Drawer Storage	BC-8	B1950	Vertical Folio Storage	BC-18
B4080	Eight Drawer Storage	BC-8	Tote Tray Storage Base Cabinets	BC-19	
B4130	Three Drawer Paper Storage	BC-8	B1510	Tote Tray Storage with Door	BC-19
B4140	Four Drawer Paper Storage	BC-9	B1520	Tote Tray Storage with Door	BC-19
B4150	Five Drawer Paper Storage	BC-9	B1530	Tote Tray Storage with Doors	BC-19
B4160	Six Drawer Paper Storage	BC-9	B1450	Open Tote Tray Storage	BC-19
B4170	Seven Drawer Paper Storage	BC-9	B1460	Tote Tray Storage with Doors	BC-19
B4180	Eight Drawer Paper Storage	BC-9	B1550	Open Tote Tray Storage	BC-19
B4230	Four Drawer Storage	BC-9	B1560	Tote Tray Storage with Doors	BC-19
B4240	Five Drawer Storage	BC-9	B1410	Tote Tray Storage with Door	BC-20
B4250	Six Drawer Storage	BC-9			
B4260	Seven Drawer Storage	BC-9			

Base Index (cont'd)

B1420	Tote Tray Storage with Door	BC-20
B1430	Tote Tray Storage with Doors	BC-20
B1400	Open Tote Tray Storage	BC-20
B1440	Tote Tray Storage with Doors	BC-20
B1500	Open Tote Tray Storage	BC-20
B1540	Tote Tray Storage with Doors	BC-20

Sink and Utility Base Cabinets		BC-21
B2010	Single Door Sink Cabinet	BC-21
B2020	Single Door Sink Cabinet	BC-21
B2000	Sink Cabinet with Doors	BC-21
B2110	Single Door Sink Cabinet	BC-21
B2120	Trash Chute Cabinet with Door	BC-21
B2100	Sink Cabinet w/Doors	BC-21
B2500	Cooktop Cabinet with Doors	BC-22
B2600	Fume Hood Cabinet with Doors	BC-22
B2700	Wide Sink Cabinet with Doors	BC-22
B2750	Sink Cabinet	BC-22
B2850	Sink Cabinet with Bottom Access with Doors	BC-22
B2800	Wheelchair Accessible Sink Cabinet with Doors	BC-22
B2800	Sink Cabinet with Doors	BC-22
D1050	Wheelchair Accessible Vanity with Doors	BC-22
D1150	Wheelchair Accessible Sink Cabinet with Doors	BC-22
B2050	Vanity	BC-23
D1060	Wheelchair Accessible Vanity with Doors	BC-23
D1010	Knee Space Sink Panel	BC-23
D1020	Knee Space Sink Panel with End Panels	BC-23

Double Sided Base Cabinets		BC-24
B0510	Double-Sided Storage with Doors	BC-24
B0520	Double-Sided Storage with Doors	BC-24
B0530	Double-Sided Storage with Doors	BC-24
B0500	Double-Sided Storage with Doors	BC-24
B0540	Double-Sided Sliding Door Storage	BC-24
B2910	Double-Sided Sink Cabinet	BC-24
B2920	Double-Sided Sink Cabinet	BC-24
B2930	Double-Sided Sink Cabinet	BC-24
B2900	Double-Sided Sink Cabinet with Doors	BC-24

Knee Space Base Cabinets		BC-25
X2000	Book Box	BC-25
X2070	Divided Book Box	BC-25
X2100	Double-Sided Book Box	BC-25
X2110	Double-Sided Book Box with Center Chase	BC-25
B4740	Single Knee-Space Drawer	BC-25
B4750	Single Knee-Space Drawer	BC-25
B4760	Single Knee-Space Drawer	BC-25

B4770	Single Knee-Space Drawer	BC-25
B4840	Double Knee-Space Drawer	BC-25
B4850	Double Knee-Space Drawer	BC-25
B4860	Double Knee-Space Drawer	BC-25
B4870	Double Knee-Space Drawer	BC-25

Angled Back Base Cabinets		BC-26
B9200	Open Angled Back Storage	BC-26
B9210	Angled Back Storage with Door	BC-26
B9220	Angled Back Storage with Door	BC-26
B9240	Angled Back Storage with Doors	BC-26
B9300	Open Angled Back Storage	BC-26
B9310	Angled Back Storage with Door	BC-26
B9320	Angled Back Storage with Door	BC-26
B9340	Angled Back Storage w/Doors	BC-26

Special Purpose Base Cabinets		BC-27
B0260	Damp Storage with Doors	BC-27
B0280	Project Drying Cabinet with Doors	BC-27
B3350	Trash Storage with Door	BC-27
B3360	Trash Storage w/Door	BC-27

Acid Storage Base Cabinets		BC-28
SC210	Acid Storage	BC-28
SC211	Acid Storage	BC-28
SC212	Acid Storage	BC-28
SC260	Acid Storage	BC-28
SC261	Acid Storage	BC-28
SC262	Acid Storage	BC-28
SC230	Acid Storage	BC-28
SC231	Acid Storage	BC-28
SC232	Acid Storage	BC-28
SCV00	Acid Storage	BC-28
SC311	Vent Kit	BC-28

Wood Flammable Storage Base Cabinets		BC-29
SC311	Wood Flammable Storage Cabinet (Manual Closing)	BC-29
SC312	Wood Flammable Storage Cabinet (Manual Closing)	BC-29
SC310	Wood Flammable Storage Cabinet (Manual Closing)	BC-29
SC311-SC	UL Listed Wood Flammable Storage Cabinet (Self-Close)	BC-29
SC312-SC	UL Listed Wood Flammable Storage Cabinet (Self-Close)	BC-29
SC310-SC	UL Listed Wood Flammable Storage Cabinet (Self-Close)	BC-29

Vacuum Pump Storage Base Cabinets		BC-30
BVC10	Vacuum Pump Storage Cabinet	BC-30
BVC20	Vacuum Pump Storage Cabinet	BC-30
BVC00	Vacuum Pump Storage Cabinet	BC-30