

Contents

General Information.....	TC-2
General Storage Tall Cabinets.....	TC-3
Corner Tall Cabinets	TC-8
Cubicle Storage Tall Cabinets	TC-10
Folio Storage Tall Cabinets.....	TC-14
Tote Tray Storage Tall Cabinets.....	TC-16
Wardrobe Storage Tall Cabinets.....	TC-19
Angled Back Tall Cabinets.....	TC-26
Special Purpose Tall Cabinets.....	TC-28
Tall Index	TC-32

General Information

Please review the following for Tall cabinet information. Contact your CiF Lab Solutions dealer for clarifications.

Casework shown in this section has been pre-engineered for a wide variety of storage solutions that are adaptable to a wide variety of applications. For specialty applications, please refer to the table of contents for exact pages. If you do not find your solution in this catalog, please contact your CiF Lab Solutions dealer for updated information. We may also be able to custom engineer a cabinet to suit your specific needs. All cabinet dimensions shown are listed as nominal.

Be sure to utilize fillers, especially at walls and corners, for proper leveling and to allow for door and drawer opening clearances.

Cabinets that require locks, finished ends, finished backs and other options, specialty hardware or devices, must be clearly called out or specified accordingly. Finished tops are sold separately from Tall cabinets.

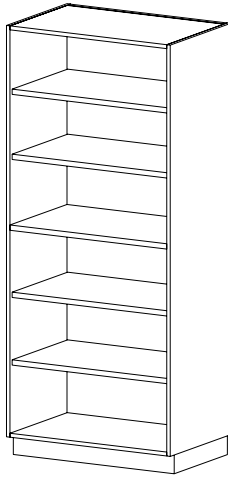
Tall Cabinet Dimensions

Tall Cabinet Depths		
Nominal	Actual End Panel (in.)	Actual End Panel (mm)
12	12.125	308
13	12.125	308
15	15.125	384
16	15.125	384
22	22.125	562
23	22.125	562

For cabinets with doors and drawers add 1" or 25mm to figure the overall depth.

Sliding door cabinets and open cabinets overall are the same as the actual end panel.

General Storage Tall Cabinets


CAT. NO **T0000**

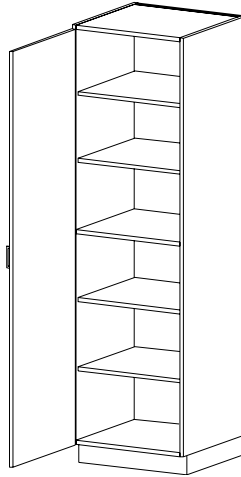
DESCRIPTION **Open Storage**

- Four adjustable shelves
- One centered fixed shelf

HEIGHT 60 | 66 | 72 | 78 | 84 | 86 | 88 | 90 | 95

DEPTH 12 | 15 | 22

WIDTH 12 | 15 | 18 | 21 | 24 | 27 | 30 | 33 | 36 | 39 | 42 | 45 | 48


CAT. NO **T0110** **T0120**
 (Hinged L) (Hinged R)

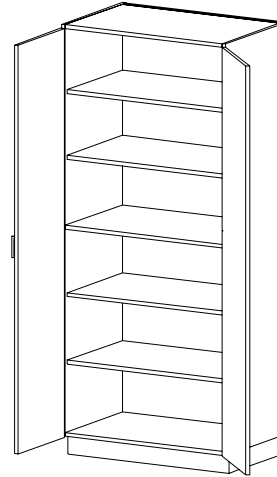
DESCRIPTION **Storage with Door**

- Four adjustable shelves
- One centered fixed shelf
- One hinged door

HEIGHT 60 | 66 | 72 | 78 | 84 | 86 | 88 | 90 | 95

DEPTH 13 | 16 | 23

WIDTH 12 | 15 | 18 | 21 | 24


CAT. NO **T0100**

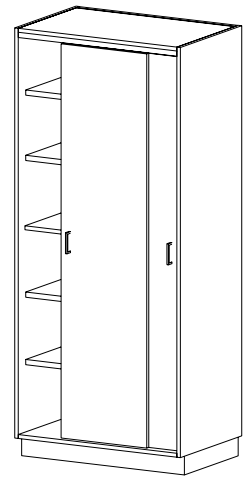
DESCRIPTION **Storage with Doors**

- Four adjustable shelves
- One centered fixed shelf
- Two hinged doors

HEIGHT 60 | 66 | 72 | 78 | 84 | 86 | 88 | 90 | 95

DEPTH 13 | 16 | 23

WIDTH 24 | 27 | 30 | 33 | 36 | 39 | 42 | 45 | 48


CAT. NO **T0840**

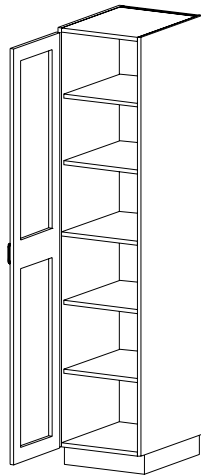
DESCRIPTION **Storage with Sliding Doors**

- Four adjustable shelves
- One centered fixed shelf
- Two sliding doors on overhead track

HEIGHT 60 | 66 | 72 | 78 | 84 | 86 | 88 | 90 | 95

DEPTH 12 | 15 | 22

WIDTH 30 | 33 | 36 | 39 | 42 | 45 | 48


CAT. NO **T0310** **T0320**
 (Hinged L) (Hinged R)

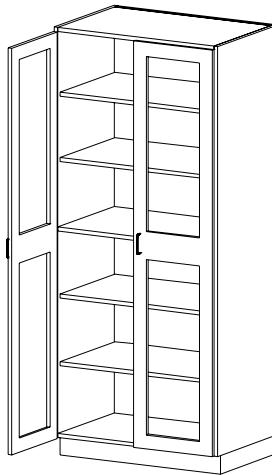
DESCRIPTION **Storage with Framed Glazed Door**

- Four adjustable shelves
- One centered fixed shelf

HEIGHT 60 | 66 | 72 | 78 | 84 | 86 | 88 | 90 | 95

DEPTH 13 | 16 | 23

WIDTH 12 | 15 | 18 | 21 | 24


CAT. NO **T0300**

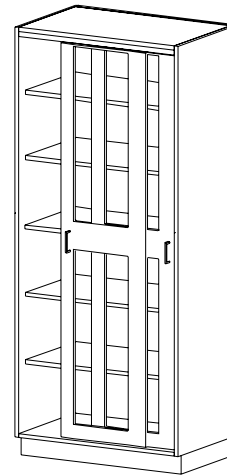
DESCRIPTION **Storage with Framed Glazed Doors**

- Four adjustable shelves
- One centered fixed shelf

HEIGHT 60 | 66 | 72 | 78 | 84 | 86 | 88 | 90 | 95

DEPTH 13 | 16 | 23

WIDTH 24 | 27 | 30 | 33 | 36 | 39 | 42 | 45 | 48


CAT. NO **T0860**

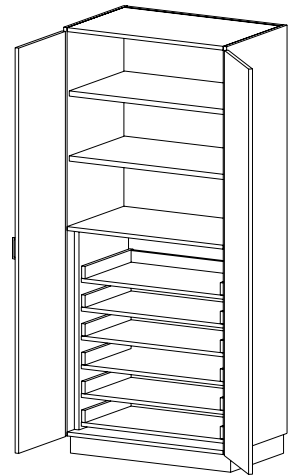
DESCRIPTION **Storage with Framed Glazed Sliding Doors**

- Four adjustable shelves
- One centered fixed shelf

HEIGHT 60 | 66 | 72 | 78 | 84 | 86 | 88 | 90 | 95

DEPTH 12 | 15 | 22

WIDTH 30 | 33 | 36 | 39 | 42 | 45 | 48


CAT. NO **T0680**

DESCRIPTION **Storage with Doors**

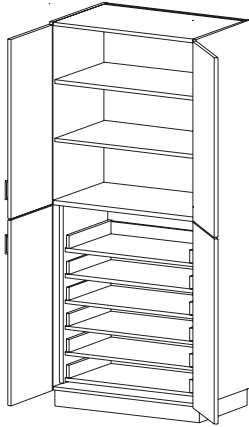
- Two adjustable shelves
- Six roll-out shelves
- Two hinged doors
- One fixed shelf

HEIGHT 72 | 78 | 84 | 86 | 88 | 90 | 95

DEPTH 16 | 23

WIDTH 24 | 27 | 30 | 33 | 36 | 39 | 42 | 45 | 48

General Storage Tall Cabinets (cont'd)


CAT. NO **T0690**

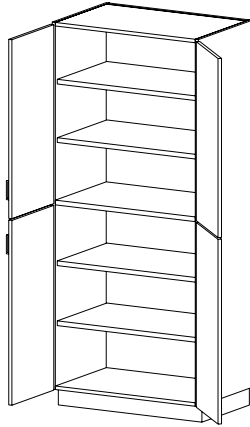
DESCRIPTION **Storage with Doors**

- Six roll-out shelves
- Four hinged doors
- One fixed shelf
- Two adjustable shelves
- Doors split at fixed shelf

HEIGHT 72 | 78 | 84 | 86 | 88 | 90 | 95

DEPTH 16 | 23

WIDTH 24 | 27 | 30 | 33 | 36 | 39 | 42 45 | 48


T0160

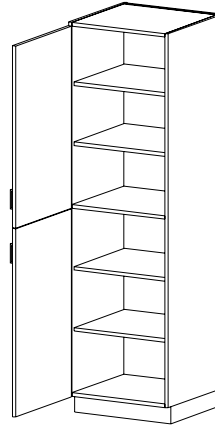
DESCRIPTION **Storage with Doors**

- Four adjustable shelves
- One fixed shelf
- Four hinged doors
- Doors split at fixed shelf

60 | 66 | 72 | 78 | 84 | 86 | 88 90 | 95

13 | 16 | 23

24 | 27 | 30 | 33 | 36 | 39 | 42 45 | 48


T0510
(Hinged L)

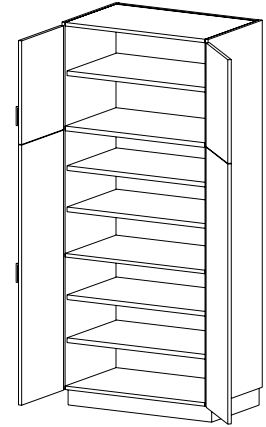
DESCRIPTION **Storage with Doors**

- Four adjustable shelves
- One fixed shelf
- Two hinged doors
- Doors split at fixed shelf

60 | 66 | 72 | 78 | 84 | 86 | 88 90 | 95

13 | 16 | 23

12 | 15 | 18 | 21 | 24


T0130

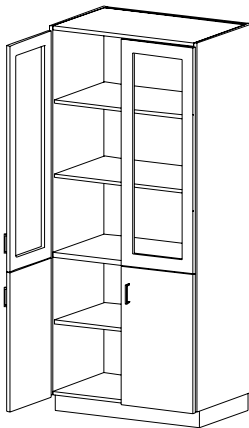
DESCRIPTION **Storage with Doors**

- Top compartment - 21.76" height.
- Five adjustable shelves
- Two fixed shelves
- Four hinged doors
- Doors split at fixed shelf

72 | 78 | 84 | 86 | 88 | 90 | 95

13 | 16 | 23

24 | 27 | 30 | 33 | 36 | 39 | 42 45 | 48


CAT. NO **T0460**

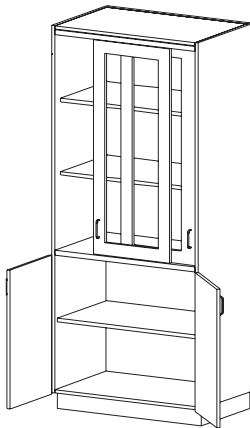
DESCRIPTION **Storage with Framed Glazed & Solid Door**

- Three adjustable shelves
- One fixed shelf
- Four hinged doors (2 hinged & 2 glass doors)
- Doors split at fixed shelf
- Lower compartment fixed at 29.06"

HEIGHT 72 | 78 | 84 | 86 | 88 | 90 | 95

DEPTH 13 | 16 | 23

WIDTH 24 | 27 | 30 | 33 | 36 | 39 | 42 45 | 48


T0480

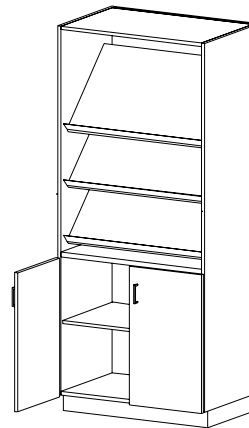
DESCRIPTION **Storage with Sliding Glazed & Solid Doors**

- Three adjustable shelves
- One fixed shelf
- Two hinged doors and two sliding glazed doors
- Lower compartment fixed at 29.06"

72 | 78 | 84 | 86 | 88 | 90 | 95

13 | 16 | 23

30 | 33 | 36 | 39 | 42 | 45 | 48


T0440

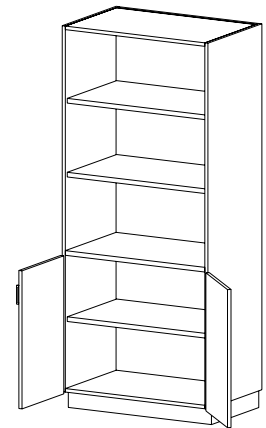
DESCRIPTION **Sloped-Shelf Display**

- Three sloping display shelves
- One adjustable shelf
- Two hinged doors
- Lower compartment fixed at 29.06"

84 | 86 | 88 | 90 | 95

13 | 16 | 23

24 | 27 | 30 | 33 | 36 | 39 | 42 45 | 48


T0400

DESCRIPTION **Storage with Doors**

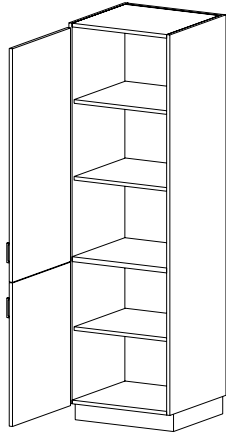
- Three adjustable shelves
- One fixed shelf
- Two hinged doors
- Lower compartment fixed at 29.06"

72 | 78 | 84 | 86 | 88 | 90 | 95

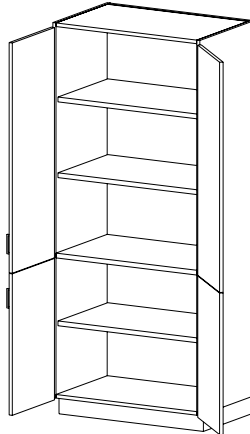
13 | 16 | 23

24 | 27 | 30 | 33 | 36 | 39 | 42 45 | 48

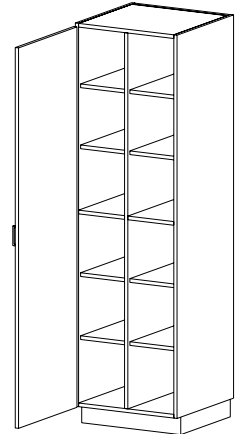
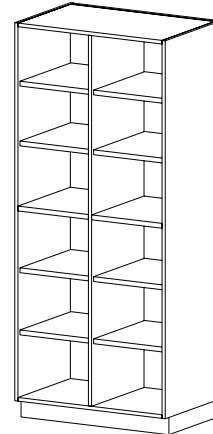
General Storage Tall Cabinets (cont'd)



Bottom compartment is fixed at 29.32" clear height



Bottom compartment is fixed at 29.32" clear height

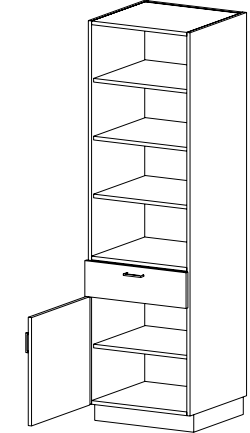
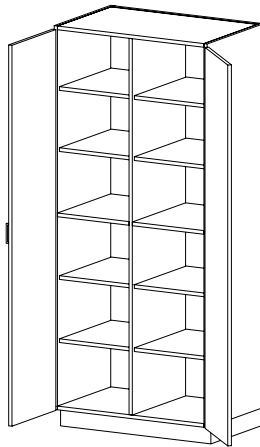


CAT. NO	T0410 (Hinged L)	T0420 (Hinged R)
DESCRIPTION	Storage with Doors <ul style="list-style-type: none"> • Three adjustable shelves • One fixed shelf • Two hinged doors • Doors split at fixed shelf 	
HEIGHT	72 78 84 86 88 90 95	
DEPTH	13 16 23	
WIDTH	12 15 18 21 24	

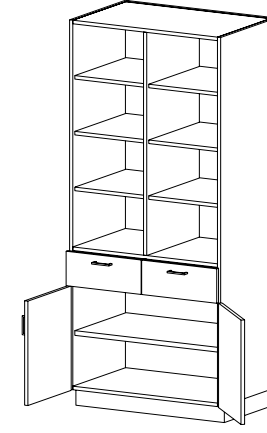
CAT. NO	T0430
DESCRIPTION	Storage with Doors <ul style="list-style-type: none"> • Three adjustable shelves • One fixed shelf • Four hinged doors • Doors split at fixed shelf
HEIGHT	72 78 84 86 88 90 95
DEPTH	13 16 23
WIDTH	24 27 30 33 36 39 42 45 48

CAT. NO	T1000
DESCRIPTION	Open Cubicle Storage <ul style="list-style-type: none"> • Eight adjustable shelves • Two centered fixed shelves • One fixed vertical partition
HEIGHT	60 66 72 78 84 86 88 90 95
DEPTH	12 15 22
WIDTH	12 15 18 21 24 27 30 33 36 39 42 45 48

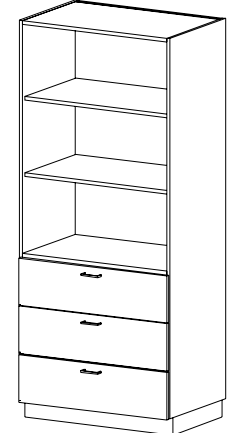
CAT. NO	T1110 (Hinged L)	T1120 (Hinged R)
DESCRIPTION	Cubicle Storage with Doors <ul style="list-style-type: none"> • Eight adjustable shelves • Two centered fixed shelves • One fixed vertical partition • One hinged door 	
HEIGHT	60 66 72 78 84 86 88 90 95	
DEPTH	13 16 23	
WIDTH	12 15 18 21 24	



Bottom compartment is fixed at 21.76" clear height



Bottom compartment is fixed at 21.76" clear height



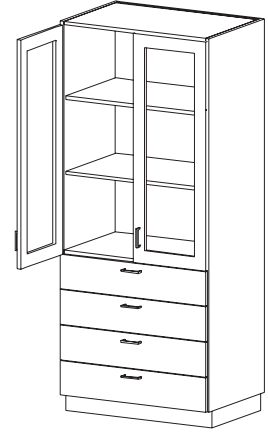
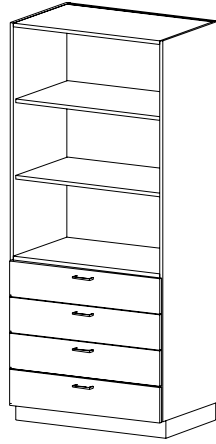
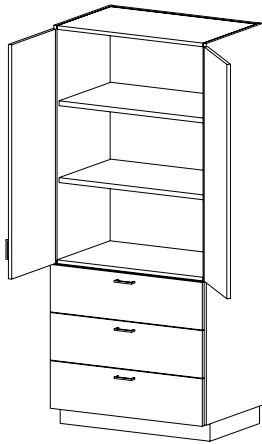
CAT. NO	T1040
DESCRIPTION	Cubicle Storage with Doors <ul style="list-style-type: none"> • Eight adjustable shelves • Two centered fixed shelves • One fixed center partition • Two hinged doors
HEIGHT	60 66 72 78 84 86 88 90 95
DEPTH	13 16 23
WIDTH	24 27 30 33 36 39 42 45 48

CAT. NO	T3110 (Hinged L)	T3120 (Hinged R)
DESCRIPTION	Storage with Door <ul style="list-style-type: none"> • Four adjustable shelves • One hinged door • One drawer 	
HEIGHT	72 78 84 86 88 90 95	
DEPTH	16 23	
WIDTH	12 15 18 21 24	

CAT. NO	T3100
DESCRIPTION	Storage with Doors <ul style="list-style-type: none"> • Six adjustable shelves above and one below • One fixed vertical partition • Two hinged doors • Two drawers
HEIGHT	72 78 84 86 88 90 95
DEPTH	16 23
WIDTH	24 27 30 33 36 39 42 45 48

CAT. NO	T3430
DESCRIPTION	Storage <ul style="list-style-type: none"> • Two adjustable shelves • Three drawers
HEIGHT	72 78 84 86 88 90 95
DEPTH	16 23
WIDTH	24 27 30 33 36 39 42 45 48

General Storage Tall Cabinets (cont'd)



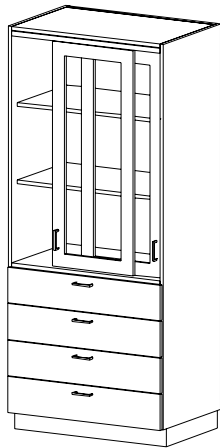
Compartment sizes vary with cabinet height. Please contact CiF Lab Solutions representative if specific sizes are required.

CAT. NO	T3030
DESCRIPTION	Door/Drawer Storage <ul style="list-style-type: none"> • Two adjustable shelves • Three drawers • Two hinged doors
HEIGHT	72 78 84 86 88 90 95
DEPTH	16 23
WIDTH	24 27 30 33 36 39 42 45 48

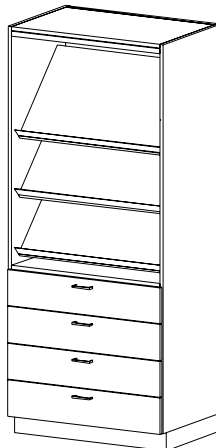
CAT. NO	T3440
DESCRIPTION	Storage <ul style="list-style-type: none"> • Two adjustable shelves • Four drawers
HEIGHT	72 78 84 86 88 90 95
DEPTH	16 23
WIDTH	24 27 30 33 36 39 42 45 48

CAT. NO	T3040
DESCRIPTION	Door/Drawer Storage <ul style="list-style-type: none"> • Two adjustable shelves • Four drawers • Two hinged doors
HEIGHT	72 78 84 86 88 90 95
DEPTH	16 23
WIDTH	24 27 30 33 36 39 42 45 48

CAT. NO	T3140
DESCRIPTION	Door/Drawer Storage with Framed Glazed Doors <ul style="list-style-type: none"> • Two adjustable shelves • Four drawers
HEIGHT	72 78 84 86 88 90 95
DEPTH	16 23
WIDTH	24 27 30 33 36 39 42 45 48



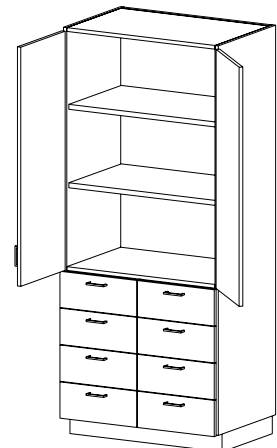
Bottom compartment is fixed at 29.32" clear height



Bottom compartment is fixed at 29.32" clear height



Bottom compartment is fixed at 29.32" clear height



Bottom compartment is fixed at 29.32" clear height

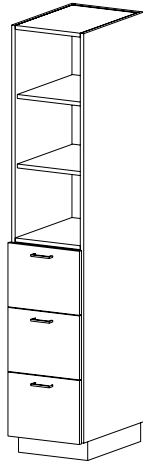
CAT. NO	T3160
DESCRIPTION	Door/Drawer Storage with Sliding Glazed Doors <ul style="list-style-type: none"> • Two adjustable shelves • Four drawers
HEIGHT	72 78 84 86 88 90 95
DEPTH	16 23
WIDTH	30 33 36 39 42 45 48

CAT. NO	T3060
DESCRIPTION	Sloped-Shelf Display <ul style="list-style-type: none"> • Three sloping display shelves • Four drawers
HEIGHT	84 86 88 90 95
DEPTH	16 23
WIDTH	24 27 30 33 36 39 42 45 48

CAT. NO	T3230
DESCRIPTION	Door/Drawer Storage <ul style="list-style-type: none"> • Two adjustable shelves • Two hinged doors • Six drawers
HEIGHT	72 78 84 86 88 90 95
DEPTH	16 23
WIDTH	24 27 30 33 36 39 42 45 48

CAT. NO	T3240
DESCRIPTION	Door/Drawer Storage <ul style="list-style-type: none"> • Two adjustable shelves • Two hinged doors • Eight drawers
HEIGHT	72 78 84 86 88 90 95
DEPTH	16 23
WIDTH	24 27 30 33 36 39 42 45 48

General Storage Tall Cabinets (cont'd)

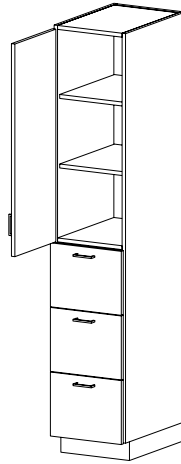

CAT. NO **T3500**

DESCRIPTION **File Drawer Storage**

- Two adjustable shelves
- Three file-size drawers

HEIGHT 72 | 78 | 84 | 86 | 88 | 90 | 95

DEPTH 16 | 23

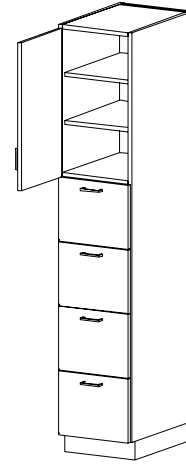
WIDTH 16 (letter) | 19 (legal)

T3510
(Hinged L)

DESCRIPTION **File Drawer Storage with Door**

- Two adjustable shelves
- One hinged door
- Three file-size drawers

HEIGHT 72 | 78 | 84 | 86 | 88 | 90 | 95

DEPTH 16 | 23

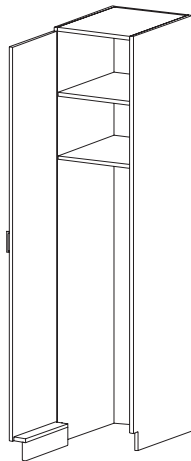
WIDTH 16 (letter) | 19 (legal)

T3550
(Hinged L)

DESCRIPTION **File Drawer Storage with Door**

- Two adjustable shelves
- One hinged door
- Four file-size drawers

HEIGHT 72 | 78 | 84 | 86 | 88 | 90 | 95

DEPTH 16 | 23

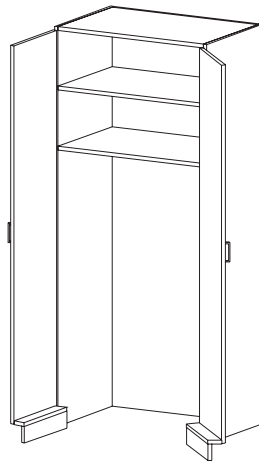
WIDTH 16 (letter) | 19 (legal)

CAT. NO **T0810**
(Hinged L)

DESCRIPTION **Door w/o Bottom w/Door**

- Two fixed shelves
- One hinged door

HEIGHT 72 | 78 | 84 | 86 | 88 | 90 | 95

DEPTH 13 | 16 | 23

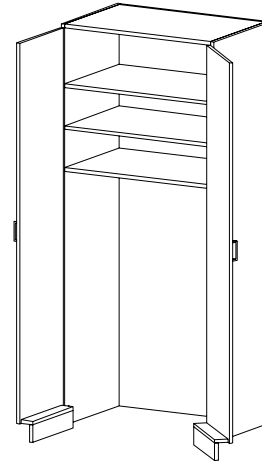
WIDTH 12 | 15 | 18 | 21 | 24

T0800

DESCRIPTION **Storage without Bottom with Doors**

- Two fixed shelves
- Two hinged doors

HEIGHT 72 | 78 | 84 | 86 | 88 | 90 | 95

DEPTH 13 | 16 | 23

WIDTH 24 | 27 | 30 | 33 | 36 | 39 | 42 | 45 | 48

T0830

DESCRIPTION **Storage without Bottom with Doors**

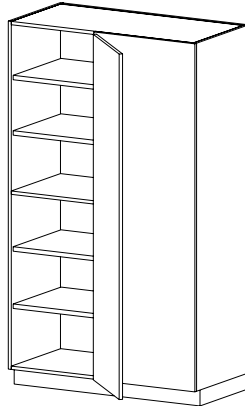
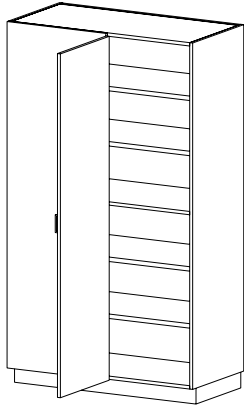
- Two adjustable shelves
- One fixed shelf
- Two hinged doors

HEIGHT 72 | 78 | 84 | 86 | 88 | 90 | 95

DEPTH 13 | 16 | 23

WIDTH 24 | 27 | 30 | 33 | 36 | 39 | 42 | 45 | 48

Corner Tall Cabinets


CAT. NO T0210
DESCRIPTION
Blind Corner Storage

- Four adjustable shelves
- One centered fixed shelf
- One hinged door

HEIGHT

60 | 66 | 72 | 78 | 84 | 86 | 88 | 90 | 95

DEPTH

13 | 16 | 23

WIDTH

See table above.

Depth of the return cabinet to be specified

T0220
Blind Corner Storage

- Four adjustable shelves
- One centered fixed shelf
- One hinged door

60 | 66 | 72 | 78 | 84 | 86 | 88 | 90 | 95

13 | 16 | 23

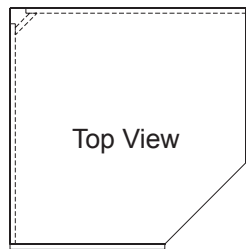
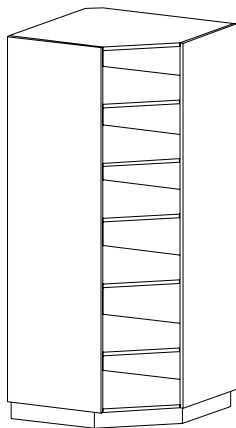
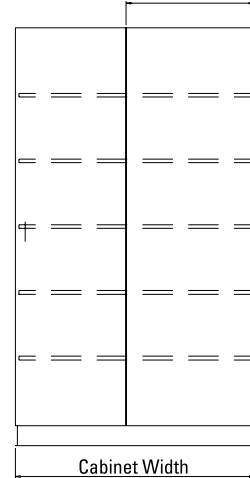
See table above.

Depth of the return cabinet to be specified

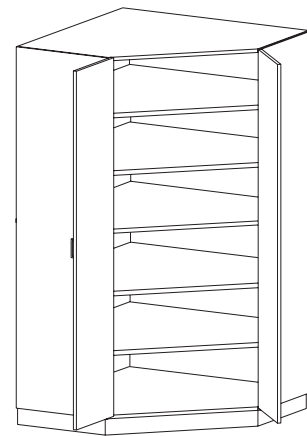
Blind corner cabinets are available in the following depths and widths:

Return Cabinet Depth	Model Number Variations Similar to W0210 & W0220		Depth	Available Widths
13	T0213	T0223	13	27 30 33 36 39
16	T0214	T0224	16	30 33 36 39 42
23	T0217	T0227	23	36 39 42 45 48

Return Cabinet Depth



Top View


CAT. NO X9770
DESCRIPTION
Open Diagonal Corner Cabinet

- Four adjustable shelves
- One fixed shelf
- 45° angle front
- Please verify that cabinets will fit through doorways

HEIGHT

60 | 66 | 72 | 78 | 84

DEPTH

23

WIDTH

36

X9790
Diagonal Corner Cabinet with Doors

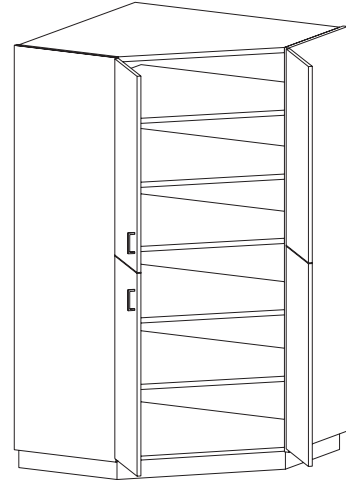
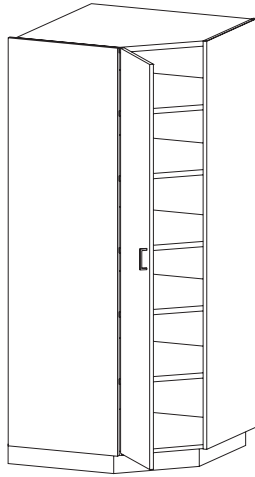
- Four adjustable shelves
- One fixed shelf
- Two hinged doors
- 45° angle front
- Please verify that cabinets will fit through doorways

60 | 66 | 72 | 78 | 84

23

48

Corner Tall Cabinets (cont'd)


CAT. NO **X9810** (Hinged L)

X9820 (Hinged R)

X9840

DESCRIPTION **Diagonal Corner Cabinet with Door**

- Four adjustable shelves
- One fixed shelf
- One hinged door
- 45° angle front
- Please verify that cabinets will fit through doorways
- Compartment sizes vary with cabinet height. Please contact your CiF Lab Solutions representative if specific sizes are required.

DESCRIPTION **Diagonal Corner Cabinet with Doors**

- Four adjustable shelves
- One fixed shelf
- Two hinged doors
- 45° angle front
- Please verify that cabinets will fit through doorways
- Compartment sizes vary with cabinet height. Please contact your CiF Lab Solutions representative if specific sizes are required.

HEIGHT 60 | 66 | 72 | 78 | 84

60 | 66 | 72 | 78 | 84

DEPTH 23

23

WIDTH 36

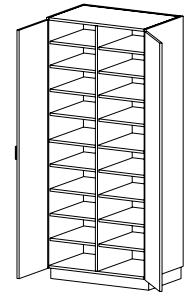
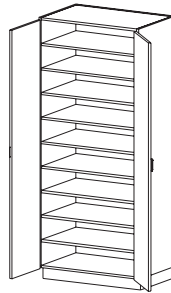
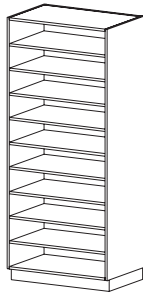
48

Cubicle Storage Tall Cabinets

Shelf Quantity Per Cabinet

Cubicle Storage Cabinets (T0030-T1350)

		Cabinet Height								
		60"	66"	72"	78"	84"	86"	88"	90"	95"
# of Partitions	0	7	7	9	9	9	9	9	9	11
	1	14	14	14	18	18	18	18	18	22
	2	21	21	21	27	27	27	27	27	33
	3	28	28	28	36	36	36	36	36	44



CAT. NO **T0030**

DESCRIPTION **Open Storage**
• Fixed shelves

HEIGHT 60 | 66 | 72 | 78 | 84 | 86 | 88 | 90 | 95

DEPTH 12 | 15 | 22

WIDTH 12 | 15 | 18 | 21 | 24 | 27 | 30 | 33 | 36 | 39 | 42 | 45 | 48

T0090

Storage with Doors
• Fixed shelves
• Two hinged doors

60 | 66 | 72 | 78 | 84 | 86 | 88 | 90 | 95

13 | 16 | 23

24 | 27 | 30 | 33 | 36 | 39 | 42 | 45 | 48

T1100 (Adj.Shlvs.) **T1130** (Fxd.Shlvs.)

Open Cubicle Storage
• One fixed vertical partition
• Two centered fixed shelves

60 | 66 | 72 | 78 | 84 | 86 | 88 | 90 | 95

12 | 15 | 22

24 | 27 | 30 | 33 | 36 | 39 | 42 | 45 | 48

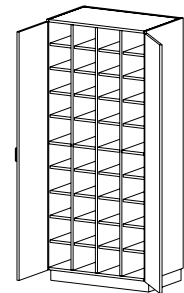
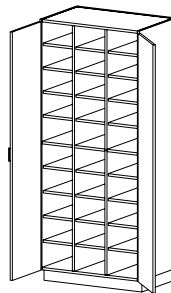
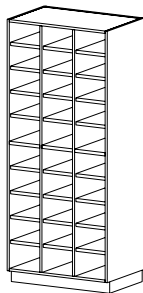
T1140 (Adj.Shlvs.) **T1150** (Fxd.Shlvs.)

Open Cubicle Storage with Doors
• One fixed vertical partition
• Two centered fixed shelves
• Two hinged doors

60 | 66 | 72 | 78 | 84 | 86 | 88 | 90 | 95

13 | 16 | 23

24 | 27 | 30 | 33 | 36 | 39 | 42 | 45 | 48



CAT. NO **T1200** (Adj.Shlvs.) **T1230** (Fxd.Shlvs.)

DESCRIPTION **Open Cubicle Storage**
• Two fixed vertical partitions
• Three centered fixed shelves

HEIGHT 60 | 66 | 72 | 78 | 84 | 86 | 88 | 90 | 95

DEPTH 12 | 15 | 22

WIDTH 30 | 33 | 36 | 39 | 42 | 45 | 48

T1240 (Adj.Shlvs.) **T1250** (Fxd.Shlvs.)

Cubicle Storage with Doors
• Two fixed vertical partitions
• Three centered fixed shelves
• Two hinged doors

60 | 66 | 72 | 78 | 84 | 86 | 88 | 90 | 95

13 | 16 | 23

30 | 33 | 36 | 39 | 42 | 45 | 48

T1300 (Adj.Shlvs.) **T1330** (Fxd.Shlvs.)

Open Cubicle Storage
• Three fixed vertical partitions
• Four centered fixed shelves

60 | 66 | 72 | 78 | 84 | 86 | 88 | 90 | 95

12 | 15 | 22

30 | 33 | 36 | 39 | 42 | 45 | 48

T1340 (Adj.Shlvs.) **T1350** (Fxd.Shlvs.)

Cubicle Storage with Doors
• Three fixed vertical partitions
• Four centered fixed shelves
• Two hinged doors

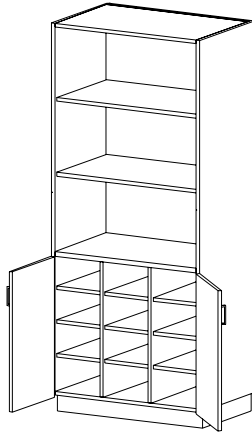
60 | 66 | 72 | 78 | 84 | 86 | 88 | 90 | 95

13 | 16 | 23

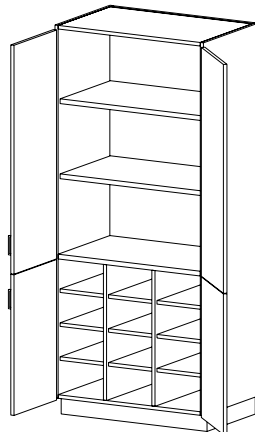
30 | 33 | 36 | 39 | 42 | 45 | 48

*See table above for shelf quantity

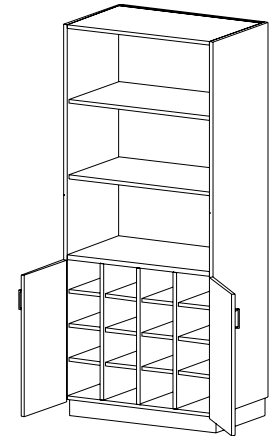
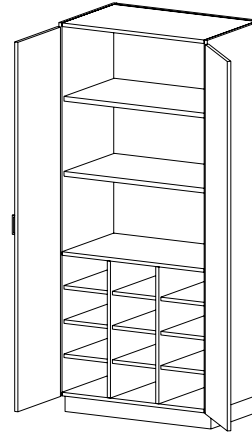
Cubicle Storage Tall Cabinets (cont'd)



Bottom compartment is fixed at 29.32" clear height

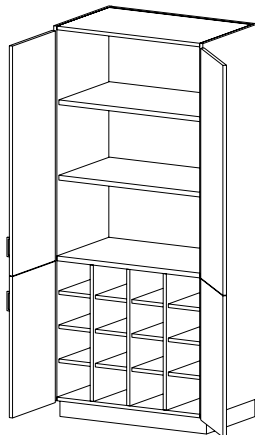


Bottom compartment is fixed at 29.32" clear height

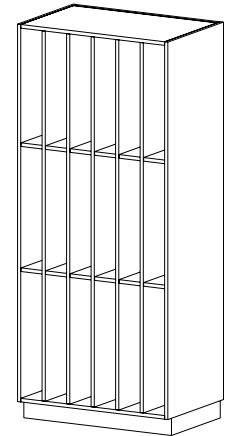
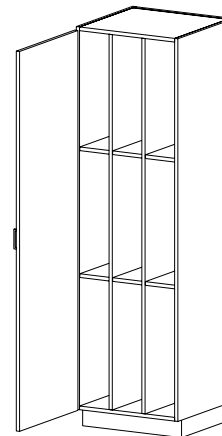
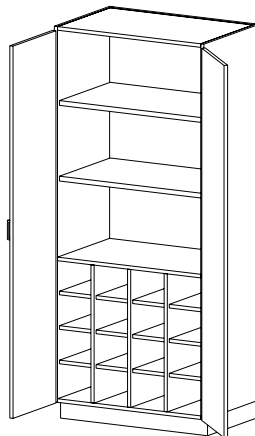


Bottom compartment is fixed at 29.32" clear height

CAT. NO	T1280	T1270	T1260	T1380
DESCRIPTION	Storage with Doors <ul style="list-style-type: none"> Two adjustable shelves in upper compartment and nine in lower compartment Two fixed vertical partitions Two hinged doors 	Storage with Doors <ul style="list-style-type: none"> Two adjustable shelves in upper compartment and nine in lower compartment Two fixed vertical partitions Four hinged doors Doors split at fixed shelf 	Cubicle Storage with Doors <ul style="list-style-type: none"> Two adjustable shelves in upper compartment and nine in lower compartment Two fixed vertical partitions Two hinged doors 	Storage with Doors <ul style="list-style-type: none"> Two adjustable shelves in upper compartment and twelve in lower compartment Three fixed vertical partitions Two hinged doors
HEIGHT	72 78 84 86 88 90 95	72 78 84 86 88 90 95	72 78 84 86 88 90 95	72 78 84 86 88 90 95
DEPTH	13 16 23	13 16 23	13 16 23	13 16 23
WIDTH	30 33 36 39 42 45 48	30 33 36 39 42 45 48	30 33 36 39 42 45 48	30 33 36 39 42 45 48

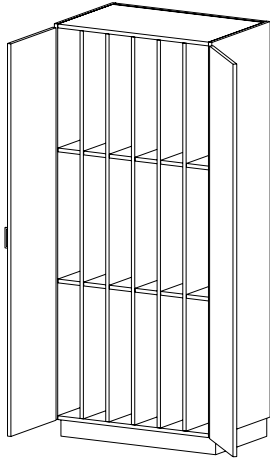


Bottom compartment is fixed at 29.32" clear height



CAT. NO	T1370	T1360	T1610 (Hinged L)	T1620 (Hinged R)	T1600
DESCRIPTION	Storage with Doors <ul style="list-style-type: none"> Two adjustable shelves in upper compartment and twelve in lower compartment Three fixed vertical partitions Four hinged doors Doors split at fixed shelf 	Storage with Doors <ul style="list-style-type: none"> Two adjustable shelves in upper compartment and twelve in lower compartment Three fixed vertical partitions Two hinged doors 	Project Storage with Door <ul style="list-style-type: none"> Six fixed shelves Two fixed vertical partitions One hinged door 		Open Project Storage <ul style="list-style-type: none"> Twelve fixed shelves Five fixed vertical partitions
HEIGHT	72 78 84 86 88 90 95	72 78 84 86 88 90 95	72 78 84 86 88 90 95		72 78 84 86 88 90 95
DEPTH	13 16 23	13 16 23	13 16 23		12 15 22
WIDTH	30 33 36 39 42 45 48	30 33 36 39 42 45 48	15 18 21 24		30 33 36 39 42 45 48

Cubicle Storage Tall Cabinets (cont'd)


CAT. NO **T1640**

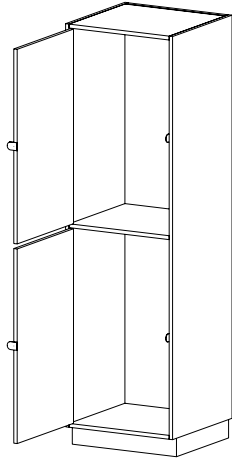
DESCRIPTION **Project Storage with Doors**

- Twelve fixed shelves
- Five fixed vertical partitions
- Two hinged doors

HEIGHT 72 | 78 | 84 | 86 | 88 | 90 | 95

DEPTH 13 | 16 | 23

WIDTH 30 | 33 | 36 | 39 | 42 | 45 | 48


T5210 (Hinged L) **T5220** (Hinged R)

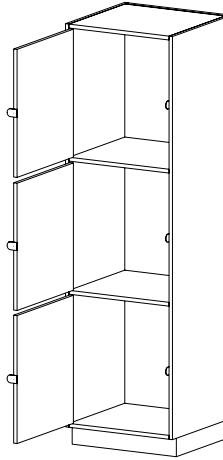
DESCRIPTION **Project Storage with Inset Doors**

- Two compartments
- Inset doors w/five knuckle hinges
- Padlock hasp on each door

84

13 | 16 | 23

12 | 15 | 18 | 21 | 24


T5310 (Hinged L) **T5320** (Hinged R)

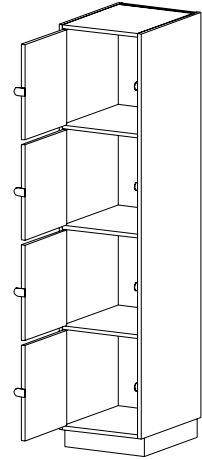
DESCRIPTION **Project Storage with Inset Doors**

- Three compartments
- Inset doors w/five knuckle hinges
- Padlock hasp on each door

84

13 | 16 | 23

12 | 15 | 18 | 21 | 24


T5410 (Hinged L) **T5420** (Hinged R)

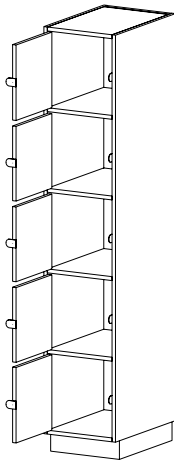
DESCRIPTION **Project Storage with Inset Doors**

- Four compartments
- Inset doors w/five knuckle hinges
- Padlock hasp on each door

84

13 | 16 | 23

12 | 15 | 18 | 21


CAT. NO **T5510** (Hinged L) **T5520** (Hinged R)

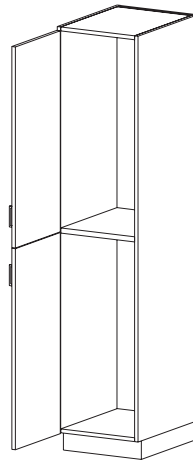
DESCRIPTION **Project Storage with Inset Doors**

- Five compartments
- Inset doors w/five knuckle hinges
- Padlock hasp on each door

HEIGHT 84

DEPTH 13 | 16 | 23

WIDTH 12 | 15 | 18


T6210 (Hinged L) **T6220** (Hinged R)

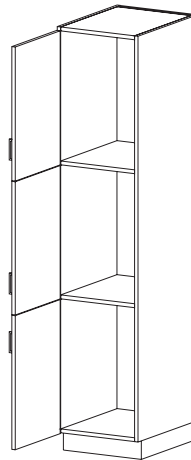
DESCRIPTION **Project Storage w/ Overlay Doors**

- Two compartments
- Overlay doors

84

13 | 16 | 23

12 | 15 | 18 | 21 | 24


T6310 (Hinged L) **T6320** (Hinged R)

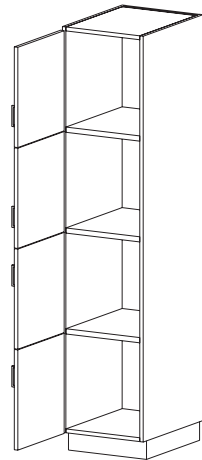
DESCRIPTION **Project Storage w/ Overlay Doors**

- Three compartments
- Overlay doors

84

13 | 16 | 23

12 | 15 | 18 | 21 | 24


T6410 (Hinged L) **T6420** (Hinged R)

DESCRIPTION **Project Storage w/ Overlay Doors**

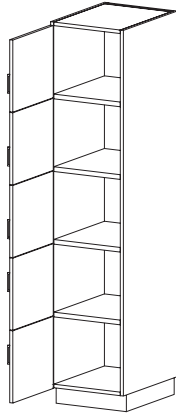
- Four compartments
- Overlay doors

84

13 | 16 | 23

12 | 15 | 18 | 21

Cubicle Storage Tall Cabinets (cont'd)



CAT. NO	T6510	T6520
	(Hinged L)	(Hinged R)

DESCRIPTION **Project Storage w/ Overlay Doors**

- Five compartments
- Overlay doors

HEIGHT 84

DEPTH 13 | 16 | 23

WIDTH 12 | 15 | 18

Folio Storage Tall Cabinets

Shelf Quantity Per Cabinet

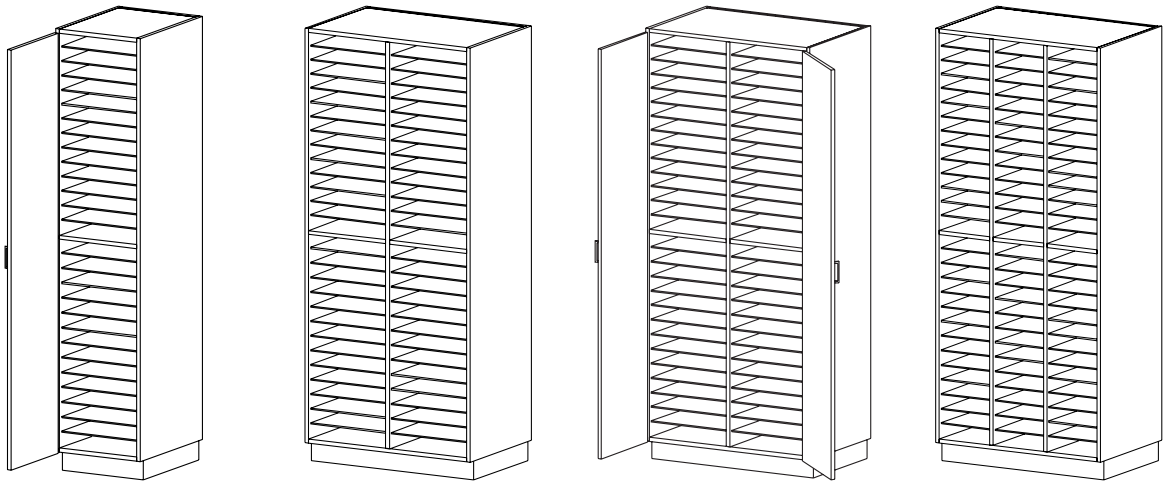
Horizontal Folio Storage Cabinets (T1800-T1860)

		Cabinet Height								
		60"	66"	72"	78"	84"	86"	88"	90"	95"
# of Partitions	0	19	21	23	25	27	28	29	29	31
	1	38	42	46	50	54	56	58	58	62
	2	57	63	69	75	81	84	87	87	93

Quantity of Dividers for Vertical Folio Storage (T1900-T1960)

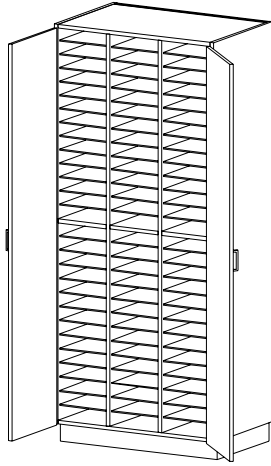
	Cabinet Width													
	12"	15"	18"	21"	24"	27"	30"	33"	36"	39"	42"	45"	48"	
T1900/1940	16	24	28	36	40	48	56	60	68	72	80	84	92	
T1950/1960	20	30	35	45	50	60	70	75	85	90	100	105	115	

All folio storage tall cabinets feature adjustable 1/4" hardboard shelves and dividers (not edged)



CAT. NO	T1810 (Hinged L)	T1820 (Hinged R)	T1800	T1840	T1850
DESCRIPTION	Storage with Door <ul style="list-style-type: none"> Adjustable 1/4" shelves One fixed centered shelf One hinged door 	Storage with Door <ul style="list-style-type: none"> Adjustable 1/4" shelves One fixed centered shelf One hinged door 	Open Folio Storage <ul style="list-style-type: none"> Adjustable 1/4" shelves Two fixed centered shelves One fixed vertical partition 	Folio Storage with Doors <ul style="list-style-type: none"> Adjustable 1/4" shelves Two fixed centered shelves One fixed vertical partition Two hinged doors 	Open Folio Storage <ul style="list-style-type: none"> Adjustable 1/4" shelves Three fixed centered shelves Two fixed vertical partitions
HEIGHT	60 66 72 78 84 86 88 90 95	60 66 72 78 84 86 88 90 95	60 66 72 78 84 86 88 90 95	60 66 72 78 84 86 88 90 95	60 66 72 78 84 86 88 90 95
DEPTH	13 16 23	13 16 23	12 15 22	13 16 23	12 15 22
WIDTH	12 15 18 21 24	12 15 18 21 24	30 33 36 39 42 45 48	30 33 36 39 42 45 48	36 39 42 45 48

Folio Storage Tall Cabinets (cont'd)


CAT. NO T1860

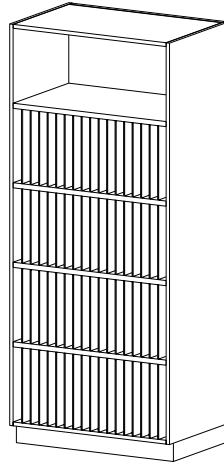
DESCRIPTION Folio Storage with Doors

- Adjustable 1/4" shelves
- Three fixed centered shelves
- Two fixed vertical partitions
- Two hinged doors

HEIGHT 60 | 66 | 72 | 78 | 84 | 86 | 88 | 90 | 95

DEPTH 13 | 16 | 23

WIDTH 36 | 39 | 42 | 45 | 48


T1900

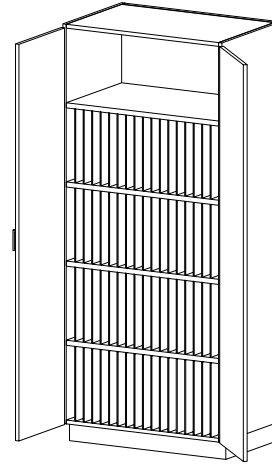
Vertical Folio Storage

- Removable 1/4" dividers
- Open storage above
- Four fixed shelves

HEIGHT 84

DEPTH 12 | 15 | 22

WIDTH 12 | 15 | 18 | 21 | 24 | 27 | 30 | 33 | 36 | 39 | 42 | 45 | 48


T1940

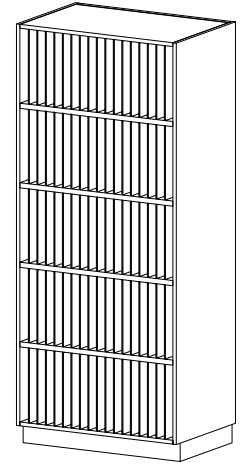
Vertical Folio Storage with Doors

- Removable 1/4" dividers
- Open storage above
- Four fixed shelves
- Two hinged doors

HEIGHT 84

DEPTH 13 | 16 | 23

WIDTH 27 | 30 | 33 | 36 | 39 | 42 | 45 | 48


T1950

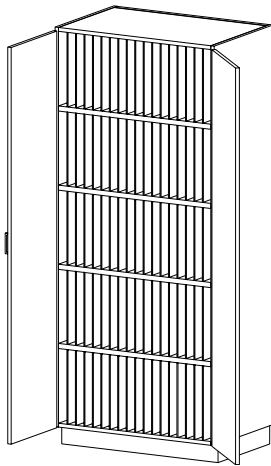
Vertical Folio Storage

- Removable 1/4" dividers
- Four fixed shelves

HEIGHT 84

DEPTH 12 | 15 | 22

WIDTH 12 | 15 | 18 | 21 | 24 | 27 | 30 | 33 | 36 | 39 | 42 | 45 | 48


CAT. NO T1960

DESCRIPTION Vertical Folio Storage with Doors

- Removable 1/4" dividers
- Four fixed shelves
- Two hinged doors

HEIGHT 84

DEPTH 13 | 16 | 23

WIDTH 27 | 30 | 33 | 36 | 39 | 42 | 45 | 48

* See page 101 for all shelf quantities

Tote Tray Storage Tall Cabinets

All tote tray cabinets include high impact resistant polystyrene trays. Tote trays are supported by ribbed polystyrene panels mounted to the cabinet ends and partitions. All trays include an aluminum label holder.

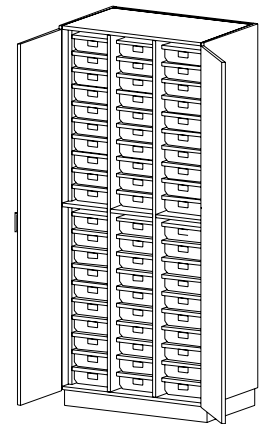
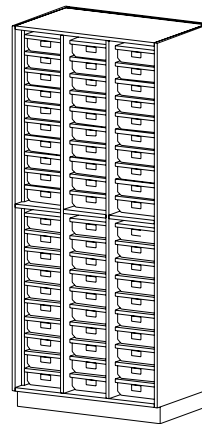
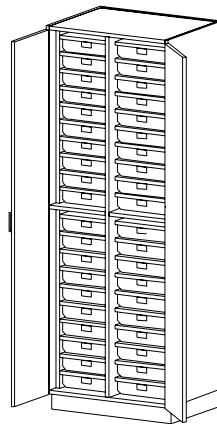
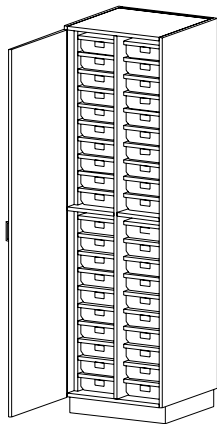
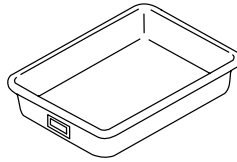
Tote tray quantity varies by cabinet height. Consult the table at right for exact counts.

Tote Tray Quantity Per Cabinet

		Cabinet Height		
		72	78	84
Cabinet Model No.	T1400	36	42	42
	T1410	24	28	28
	T1420	24	28	28
	T1430	24	28	28
	T1440	36	42	42
	T1450	48	54	60
	T1460	48	54	60
	T1470	15	15	15
	T1480	21	21	21
	T1500	48	56	56
	T1510	32	36	40
	T1520	32	36	40
	T1530	32	36	40
	T1540	48	56	56
	T1550	64	72	80
T1560	64	72	80	
T1570	20	20	20	
T1580	28	28	28	

Tote Tray Sizes

- TT100** 12½" w x 19" d x 4⅜" h
- TT110** 12½" w x 19" d x 3½" h
- TT120** 10" w x 19" d x 4" h
- TT130** 10" w x 19" d x 3½" h
- TT140** 14" w x 18" d x 3½" h
- TT150** 14" w x 18" d x 4" h


CAT. NO
T1510
(Hinged L)

T1520
(Hinged R)

DESCRIPTION

- Tote Tray Storage with Door**
- One fixed vertical partition
 - Two fixed shelves
 - Tote tray size: TT130
 - One hinged door

T1530

- Tote Tray Storage with Doors**
- One fixed vertical partition
 - Two fixed shelves
 - Tote tray size: TT110
 - Two hinged doors

T1450

- Open Tote Tray Storage**
- Two fixed vertical partitions
 - Three fixed shelves
 - Tote tray size: 36" w – TT130, 48" w – TT140

T1460

- Tote Tray Storage with Doors**
- Two fixed vertical partitions
 - Three fixed shelves
 - Tote tray size: 36" w – TT130, 48" w – TT140
 - Two hinged doors

HEIGHT 72 | 78 | 84

72 | 78 | 84

72 | 78 | 84

72 | 78 | 84

DEPTH 23

23

23

23

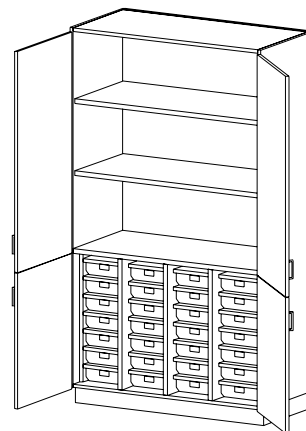
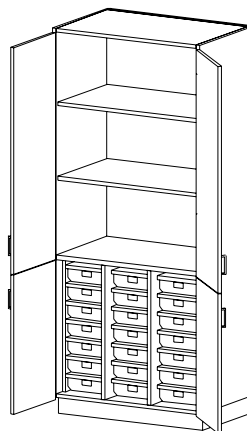
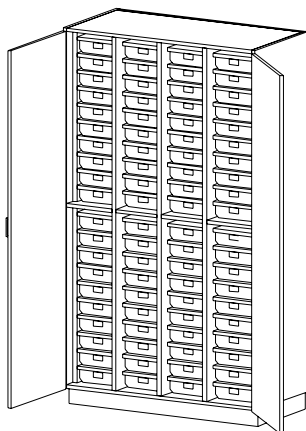
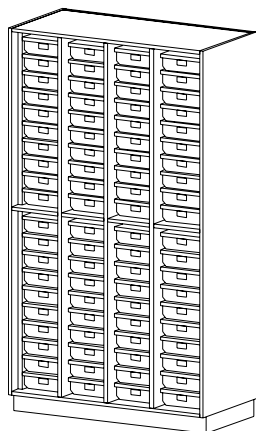
WIDTH 24

30

36 | 48

36 | 48

Tote Tray Storage Tall Cabinets (cont'd)


CAT. NO **T1550**
DESCRIPTION

- Open Tote Tray Storage**
- Three fixed vertical partitions
 - Tote tray size: TT130

HEIGHT 72 | 78 | 84

DEPTH 23

WIDTH 48

CAT. NO **T1560**
Tote Tray Storage with Doors

- Three fixed vertical partitions
- Tote tray size: TT130
- Two hinged doors

HEIGHT 72 | 78 | 84

DEPTH 23

WIDTH 48

CAT. NO **T1480**
Tote Tray Storage with Doors

- Two adjustable shelves
- Two fixed vertical partitions
- Tote tray size: 36" w – TT130, 48" w – TT140
- Doors split at fixed shelf

HEIGHT 72 | 78 | 84

DEPTH 23

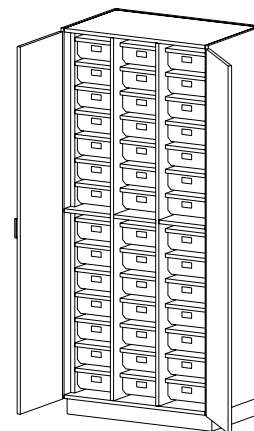
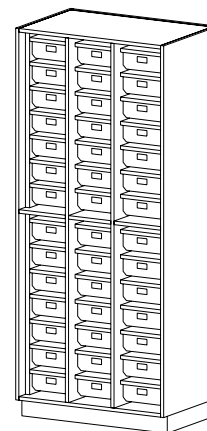
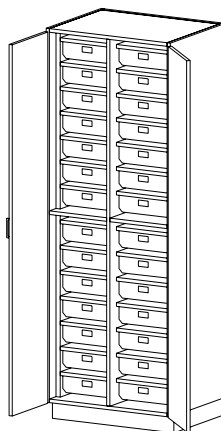
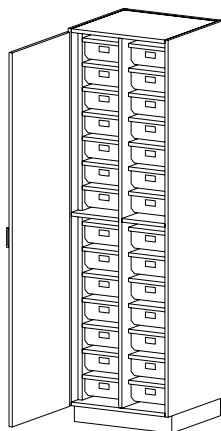
WIDTH 36 | 48

CAT. NO **T1580**
Tote Tray Storage with Doors

- Two adjustable shelves
- Three fixed vertical partitions
- Tote tray size: TT130
- Four hinged doors
- Doors split at fixed shelf

HEIGHT 72 | 78 | 84

DEPTH 23

WIDTH 48

CAT. NO
T1410
(Hinged L)

T1420
(Hinged R)

DESCRIPTION
Tote Tray Storage with Door

- One fixed vertical partition
- Tote tray size: TT120
- One hinged door

HEIGHT 72 | 78 | 84

DEPTH 23

WIDTH 24

CAT. NO **T1430**
Tote Tray Storage with Doors

- One fixed vertical partition
- Tote tray size: TT100
- Two hinged doors

HEIGHT 72 | 78 | 84

DEPTH 23

WIDTH 30

CAT. NO **T1400**
Open Tote Tray Storage

- Two fixed vertical partitions
- Tote tray size: 36" w – TT120, 48" w – TT150

HEIGHT 72 | 78 | 84

DEPTH 23

WIDTH 36 | 48

CAT. NO **T1440**
Tote Tray Storage with Doors

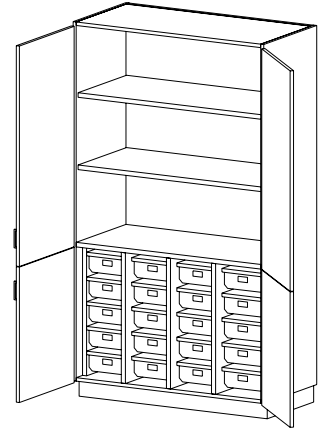
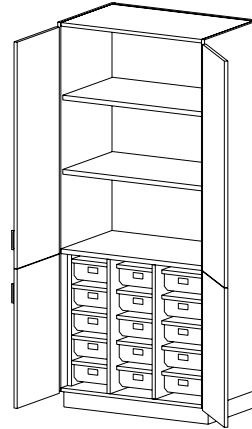
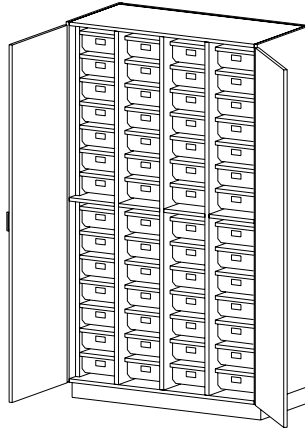
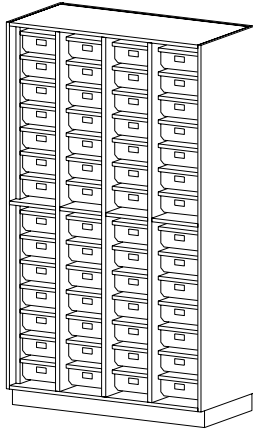
- Two fixed vertical partitions
- Tote tray size: 36" w – TT120, 48" w – TT150
- Two hinged doors

HEIGHT 72 | 78 | 84

DEPTH 23

WIDTH 36 | 48

Tote Tray Storage Tall Cabinets (cont'd)


CAT. NO T1500
DESCRIPTION
Open Tote Tray Storage

- Three fixed vertical partitions
- Tote tray size: TT120

HEIGHT 72 | 78 | 84

DEPTH 23

WIDTH 48

T1540
Tote Tray Storage with Doors

- Three fixed vertical partitions
- Tote tray size: TT120
- Two hinged doors

HEIGHT 72 | 78 | 84

DEPTH 23

WIDTH 48

T1470
Tote Tray Storage with Doors

- Two adjustable shelves
- Two fixed vertical partitions
- Tote tray size: 36" w – TT120, 48" w – TT150

HEIGHT 72 | 78 | 84

DEPTH 23

WIDTH 36 | 48

T1570
Tote Tray Storage with Doors

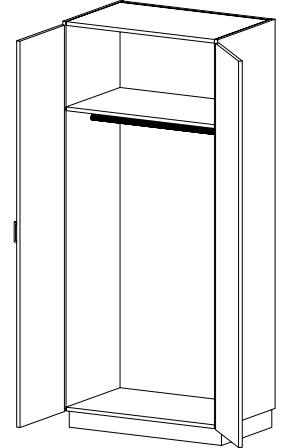
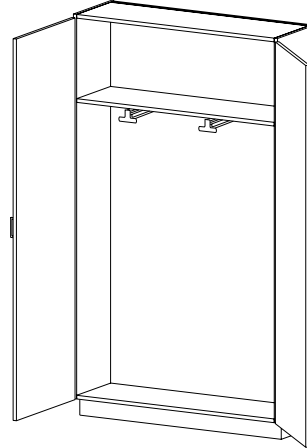
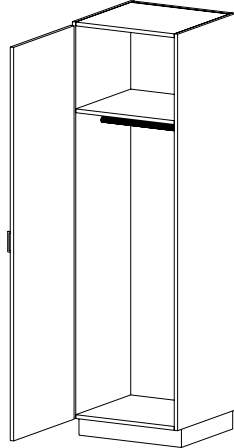
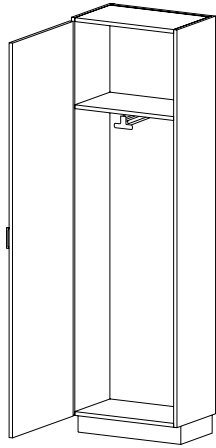
- Two adjustable shelves
- Three fixed vertical partitions
- Tote tray size: TT120
- Four hinged doors

HEIGHT 72 | 78 | 84

DEPTH 23

WIDTH 48

Wardrobe Storage Tall Cabinets



CAT. NO **T2310** **T2320**
(Hinged L) (Hinged R)

DESCRIPTION **Wardrobe Storage with Clothing Carrier**

- One fixed shelf
- One hinged door
- One pull-out clothing carrier

CAT. NO **T2310** **T2320**
(Hinged L) (Hinged R)

DESCRIPTION **Wardrobe Storage with Rod**

- One fixed shelf
- One hinged door
- One hanger rod

CAT. NO **T2300**

DESCRIPTION **Wardrobe Storage with Clothing Carrier**

- One fixed shelf
- Two hinged doors
- Two pull-out clothing carriers

CAT. NO **T2300**

DESCRIPTION **Wardrobe Storage with Rod**

- One fixed shelf
- Two hinged doors
- One hanger rod
- Any hanger rod placed in a cabinet greater than 40-inches wide, will have a load rating of 140 lbs. (evenly distributed).

HEIGHT 72 | 78 | 84

72 | 78 | 84

72 | 78 | 84

72 | 78 | 84

DEPTH 13 | 16 | 23

23

13 | 16

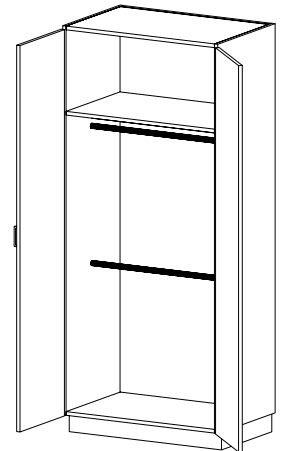
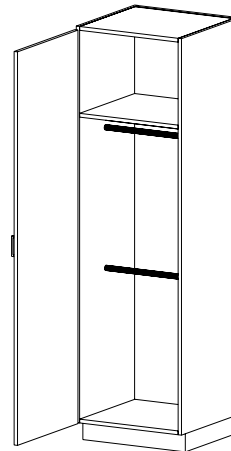
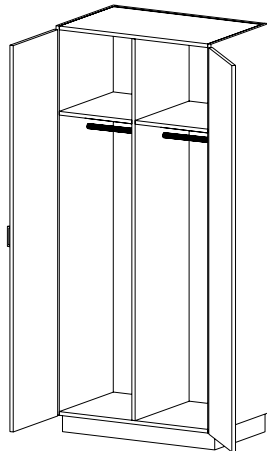
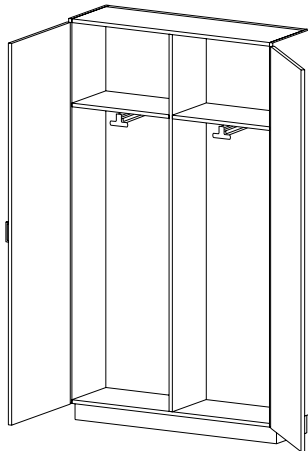
23

WIDTH 24

12 | 15 | 18 | 21 | 24

48

27 | 30 | 33 | 36 | 39 | 42
45 | 48



CAT. NO **T2340**

DESCRIPTION **Wardrobe Storage with Clothing Carrier**

- Two fixed shelves
- Two hinged doors
- Two pull-out clothing carriers
- One fixed center partition

CAT. NO **T2340**

DESCRIPTION **Wardrobe Storage with Rod**

- Two fixed shelves
- Two hinged doors
- Two hanger rods
- One fixed center partition

CAT. NO **T2410** **T2420**
(Hinged L) (Hinged R)

DESCRIPTION **Wardrobe Storage with Rod**

- One fixed shelf
- One hinged door
- Two hanger rods

CAT. NO **T2400**

DESCRIPTION **Wardrobe Storage with Rod**

- One fixed shelf
- Two hinged doors
- Two hanger rods
- Any hanger rod placed in a cabinet greater than 40-inches wide, will have a load rating of 140 lbs. (evenly distributed).

HEIGHT 72 | 78 | 84

72 | 78 | 84

84

84

DEPTH 13 | 16 | 23

23

23

23

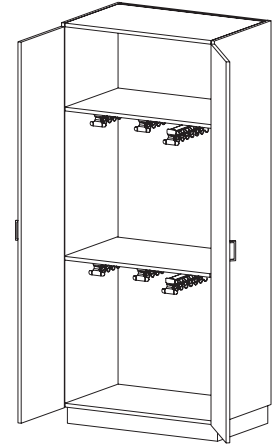
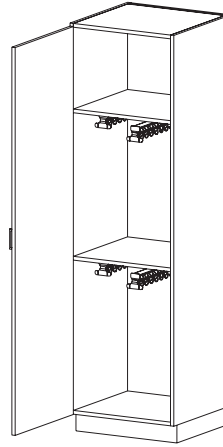
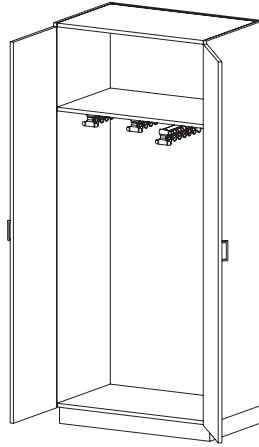
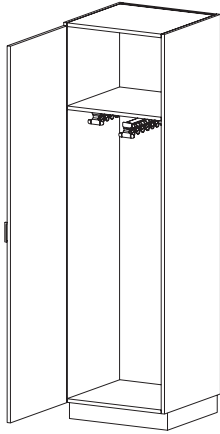
WIDTH 48

27 | 30 | 33 | 36 | 39 | 42
45 | 48

12 | 15 | 18 | 21 | 24

27 | 30 | 33 | 36 | 39 | 42
45 | 48

Wardrobe Storage Tall Cabinets (cont'd)



CAT. NO **T2510** (Hinged L) **T2520** (Hinged R)

DESCRIPTION **Smock Storage with Door**

- One fixed shelf
- One hinged door
- Two pull-out racks mounted under shelf – each rack features 14 hooks

HEIGHT 84

DEPTH 23

WIDTH 24

T2500

Smock Storage with Doors

- One fixed shelf
- Two hinged doors
- Three pull-out racks mounted under shelf (48" width has four racks) – each rack features 14 hooks

HEIGHT 84

DEPTH 23

WIDTH 36 | 39 | 42 | 45 | 48

T2610 (Hinged L) **T2620** (Hinged R)

Apron Storage with Door

- Two fixed shelves
- One hinged door
- Two pull-out racks mounted under each shelf – each rack features 14 hooks

HEIGHT 84

DEPTH 23

WIDTH 24

T2600

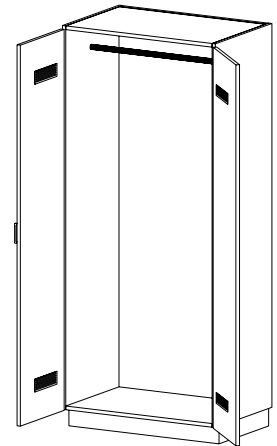
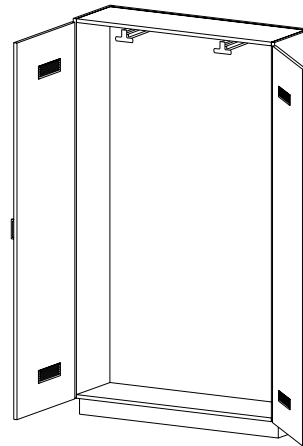
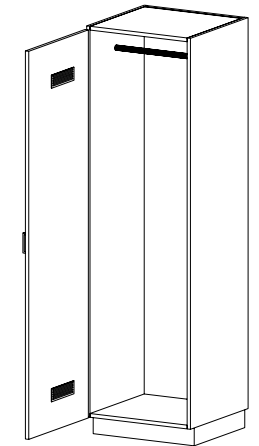
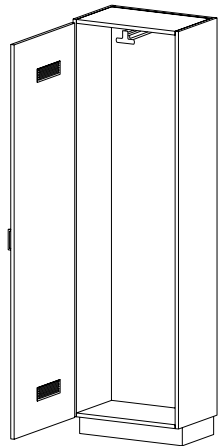
Apron Storage with Doors

- Two fixed shelves
- Two hinged doors
- Three pull-out racks mounted under each shelf (48" width has four racks per shelf) – each rack features 14 hooks

HEIGHT 84

DEPTH 23

WIDTH 36 | 39 | 42 | 45 | 48



CAT. NO **T2010** (Hinged L) **T2020** (Hinged R)

DESCRIPTION **Robe Storage with Clothing Carrier**

- One hinged door with louvered vents
- One pull-out clothing carrier

HEIGHT 72 | 78 | 84

DEPTH 13 | 16 | 23

WIDTH 24

T2010 (Hinged L) **T2020** (Hinged R)

Robe Storage with Rod

- One hinged door with louvered vents
- One hanger rod

HEIGHT 72 | 78 | 84

DEPTH 23

WIDTH 12 | 15 | 18 | 21 | 24

T2000

Robe Storage with Clothing Carriers

- Two hinged doors with louvered vents
- Two pull-out clothing carriers

HEIGHT 72 | 78 | 84

DEPTH 13 | 16 | 23

WIDTH 48

T2000

Robe Storage with Rod

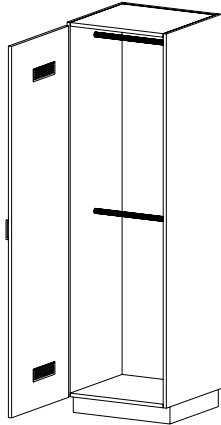
- Two hinged doors w/louvered vents
- One hanger rod
- Any hanger rod placed in a cabinet greater than 40-inches wide, will have a load rating of 140 lbs. (evenly distributed).

HEIGHT 72 | 78 | 84

DEPTH 23

WIDTH 27 | 30 | 33 | 36 | 39 | 42 | 45 | 48

Wardrobe Storage Tall Cabinets (cont'd)



CAT. NO **T2110** **T2120**
(Hinged L) (Hinged R)

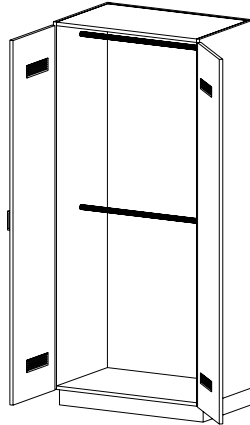
DESCRIPTION **Uniform Storage with Door**

- One hinged door with louvered vents
- Two hanger rods

HEIGHT 84

DEPTH 23

WIDTH 12 | 15 | 18 | 21 | 24



CAT. NO **T2100**

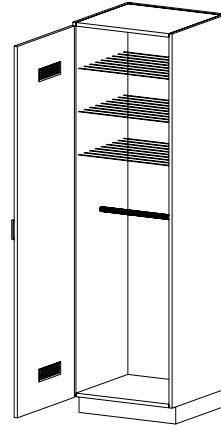
DESCRIPTION **Uniform Storage with Doors**

- Two hinged doors w/louvered vents
- Two hanger rods
- Any hanger rod placed in a cabinet greater than 40-inches wide, will have a load rating of 140 lbs. (evenly distributed).

HEIGHT 84

DEPTH 23

WIDTH 27 | 30 | 33 | 36 | 39 | 42 | 45 | 48



CAT. NO **T2210** **T2220**
(Hinged L) (Hinged R)

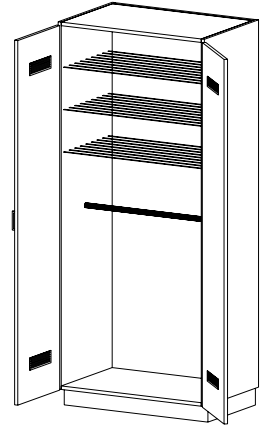
DESCRIPTION **Uniform/Hat Storage with Door**

- Three vinyl-coated wire shelves
- One hinged door with louvered vents
- One hanger rod

HEIGHT 84

DEPTH 23

WIDTH 18 | 21 | 24



CAT. NO **T2200**

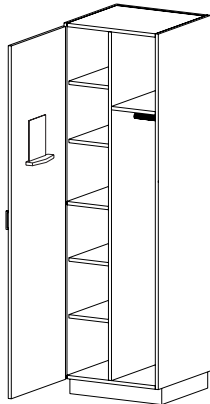
DESCRIPTION **Uniform/Hat Storage with Doors**

- Three vinyl-coated wire shelves
- Two hinged doors w/louvered vents
- One hanger rod
- Any hanger rod placed in a cabinet greater than 40-inches wide, will have a load rating of 140 lbs. (evenly distributed).

HEIGHT 84

DEPTH 23

WIDTH 27 | 30 | 33 | 36 | 39 | 42 | 45 | 48



Wardrobe compartment fixed at 11.12" clear width

CAT. NO **T2710** **T2720**
(Hinged L) (Hinged R)

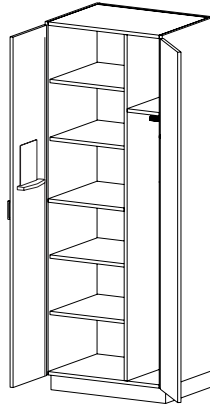
DESCRIPTION **Wardrobe Storage with Rod and Shelves**

- Four adjustable shelves
- Two fixed shelves
- One hanger rod
- One pin tray
- Mirror mounted on door
- One hinged door

HEIGHT 72 | 78 | 84 | 86 | 88 | 90 | 95

DEPTH 23

WIDTH 24



Wardrobe compartment fixed at 8.19" clear width

CAT. NO **T2690**

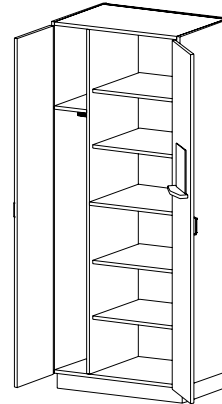
DESCRIPTION **Wardrobe Storage with Rod and Shelves**

- Four adjustable shelves
- Two fixed shelves
- One hanger rod
- One pin tray
- Mirror mounted on left door
- Two hinged doors

HEIGHT 72 | 78 | 84 | 86 | 88 | 90 | 95

DEPTH 23

WIDTH 30 | 33



Wardrobe compartment fixed at 8.19" clear width

CAT. NO **T2670**

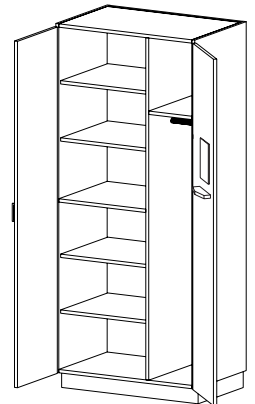
DESCRIPTION **Wardrobe Storage with Rod and Shelves**

- Four adjustable shelves
- Two fixed shelves
- One hanger rod
- One pin tray
- Mirror mounted on right door
- Two hinged doors

HEIGHT 72 | 78 | 84 | 86 | 88 | 90 | 95

DEPTH 23

WIDTH 30 | 33



Wardrobe compartment fixed at 11.12" clear width

CAT. NO **T2700**

DESCRIPTION **Wardrobe Storage with Rod and Shelves**

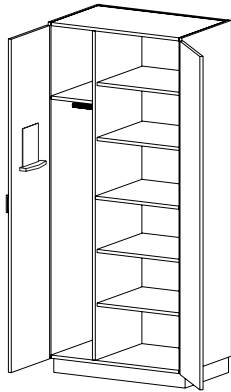
- Four adjustable shelves
- Two fixed shelves
- One hanger rod
- One pin tray
- Mirror mounted on right door
- Two hinged doors

HEIGHT 72 | 78 | 84 | 86 | 88 | 90 | 95

DEPTH 23

WIDTH 36 | 39 | 42 | 45 | 48

Wardrobe Storage Tall Cabinets (cont'd)



Wardrobe compartment fixed at 11.12" clear width

CAT. NO T2680

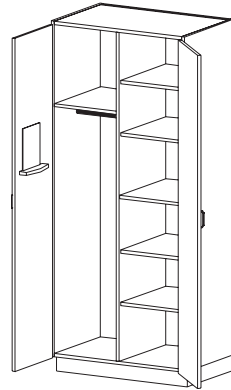
DESCRIPTION **Wardrobe Storage with Rod and Shelves**

- Four adjustable shelves
- Two fixed shelves
- One hanger rod
- One pin tray
- Mirror mounted on left door
- Two hinged doors

HEIGHT 72 | 78 | 84 | 86 | 88 | 90 | 95

DEPTH 23

WIDTH 36 | 39 | 42 | 45 | 48



T2640

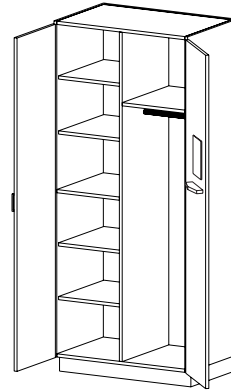
Wardrobe Storage with Rod and Shelves

- Four adjustable shelves
- Two fixed shelves
- One hanger rod
- One pin tray
- Mirror mounted on left door
- Two hinged doors
- One centered partition

72 | 78 | 84 | 86 | 88 | 90 | 95

23

27 | 30 | 33 | 36 | 39 | 42 | 45 | 48



T2740

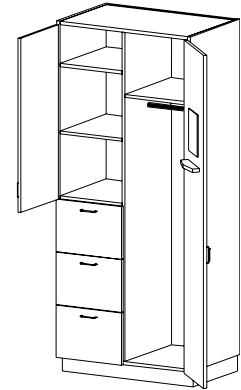
Wardrobe Storage with Rod and Shelves

- Four adjustable shelves
- Two fixed shelves
- One hanger rod
- One pin tray
- Mirror mounted on right door
- Two hinged doors
- One centered partition

72 | 78 | 84 | 86 | 88 | 90 | 95

23

27 | 30 | 33 | 36 | 39 | 42 | 45 | 48



T2580

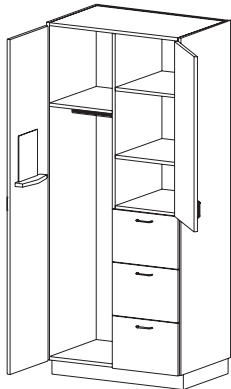
Wardrobe Storage with Adjustable Shelf and Drawers

- Two adjustable shelves
- Two fixed shelves
- One hanger rod & one pin tray
- Three lateral file drawers
- One hinged full door
- One hinged half door
- Mirror mounted on right door
- One centered partition

72 | 78 | 84 | 86 | 88 | 90 | 95

23

27 | 30 | 33 | 36 | 39 | 42 | 45 | 48



CAT. NO T2590

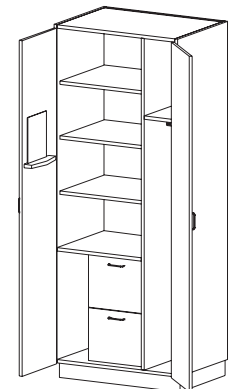
DESCRIPTION **Wardrobe Storage with Adjustable Shelf and Drawers**

- Two adjustable shelves
- Two fixed shelves
- One hanger rod
- One pin tray
- Mirror mounted on left door
- Three lateral file drawers
- One hinged full door
- One hinged half door
- One centered partition

HEIGHT 72 | 78 | 84 | 86 | 88 | 90 | 95

DEPTH 23

WIDTH 27 | 30 | 33 | 36 | 39 | 42 | 45 | 48



Wardrobe compartment fixed at 8.19" clear width

T2790

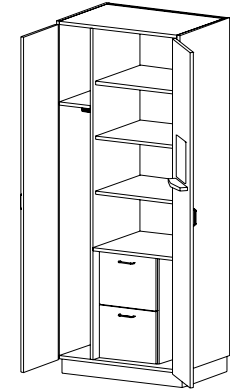
Teacher Wardrobe with Rod and Shelves

- Three adjustable shelves
- Two fixed shelves
- One hanger rod
- One pin tray
- Mirror mounted on left door
- Two letter-size file drawers
- Two hinged doors

72 | 78 | 84 | 86 | 88 | 90 | 95

23

30 | 33



Wardrobe compartment fixed at 8.19" clear width

T2770

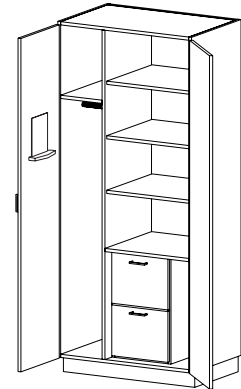
Teacher Wardrobe with Rod and Shelves

- Three adjustable shelves
- Two fixed shelves
- One hanger rod
- One pin tray
- Mirror mounted on right door
- Two letter-size file drawers
- Two hinged doors

72 | 78 | 84 | 86 | 88 | 90 | 95

23

30 | 33



Wardrobe compartment fixed at 11.12" clear width

T2780

Teacher Wardrobe with Rod and Shelves

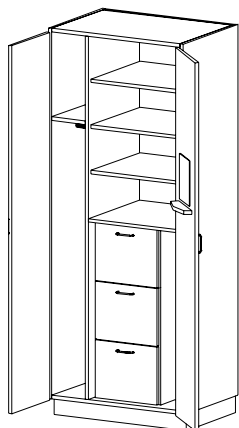
- Three adjustable shelves
- Two fixed shelves
- One hanger rod
- One pin tray
- Mirror mounted on left door
- Two letter-size file drawers
- Two hinged doors

72 | 78 | 84 | 86 | 88 | 90 | 95

23

36 | 39 | 42 | 45 | 48

Wardrobe Storage Tall Cabinets (cont'd)



Wardrobe compartment fixed at 8.19" clear width

CAT. NO **T2870**

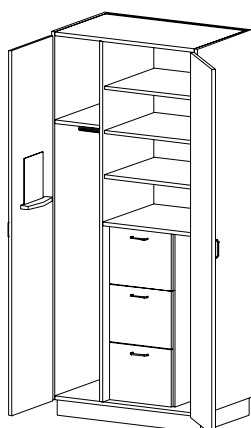
DESCRIPTION **Teacher Wardrobe with Rod and Shelves**

- Three adjustable shelves
- Two fixed shelves
- One hanger rod w/ fixed shelf
- One pin tray
- Mirror mounted on right door
- Three letter-size file drawers
- Two hinged doors

HEIGHT 72 | 78 | 84 | 86 | 88 | 90 | 95

DEPTH 23

WIDTH 30 | 33



Wardrobe compartment fixed at 11.12" clear width

T2880

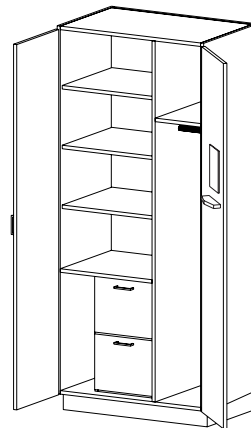
Teacher Wardrobe with Rod and Shelves

- Three adjustable shelves
- Two fixed shelves
- One hanger rod w/ fixed shelf
- One pin tray
- Mirror mounted on left door
- Three letter-size file drawers
- Two hinged doors

72 | 78 | 84 | 86 | 88 | 90 | 95

23

36 | 39 | 42 | 45 | 48



Wardrobe compartment fixed at 11.12" clear width

T2800

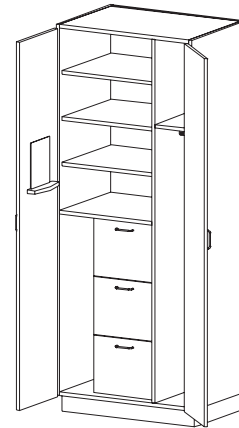
Teacher Wardrobe with Rod and Shelves

- Three adjustable shelves
- One fixed shelf
- One hanger rod w/ fixed shelf
- One pin tray
- Mirror mounted on right door
- Two letter-size file drawers
- Two hinged doors

72 | 78 | 84 | 86 | 88 | 90 | 95

23

36 | 39 | 42 | 45 | 48



Wardrobe compartment fixed at 8.19" clear width

T2890

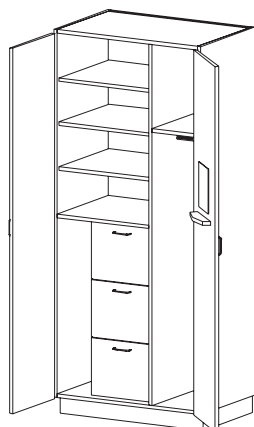
Teacher Wardrobe with Rod and Shelves

- Three adjustable shelves
- One fixed shelf
- One hanger rod w/ fixed shelf
- One pin tray
- Mirror mounted on left door
- Three letter-size file drawers
- Two hinged doors

72 | 78 | 84 | 86 | 88 | 90 | 95

23

30 | 33



Wardrobe compartment fixed at 11.12" clear width

CAT. NO **T2900**

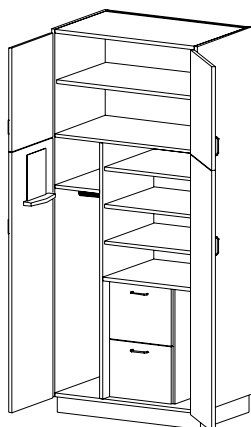
DESCRIPTION **Teacher Wardrobe with Rod and Shelves**

- Three adjustable shelves
- One fixed shelf
- One hanger rod w/ fixed shelf
- One pin tray
- Mirror mounted on right door
- Three letter-size file drawers
- Two hinged doors

HEIGHT 72 | 78 | 84 | 86 | 88 | 90 | 95

DEPTH 23

WIDTH 36 | 39 | 42 | 45 | 48



Wardrobe compartment fixed at 11.12" clear width

T2850

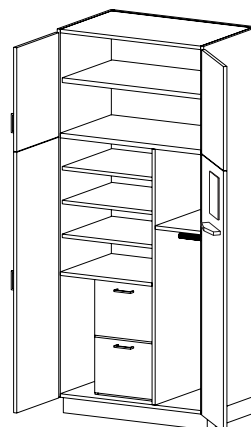
Teacher Wardrobe with Rod and Shelves

- Four adjustable shelves
- One fixed shelf
- One hanger rod w/ fixed shelf
- One pin tray
- Mirror mounted on left door
- Two letter-size file drawers
- Four hinged doors

84 | 86 | 88 | 90 | 95

23

36 | 39 | 42 | 45 | 48



Wardrobe compartment fixed at 11.12" clear width

T2830

Teacher Wardrobe with Rod and Shelves

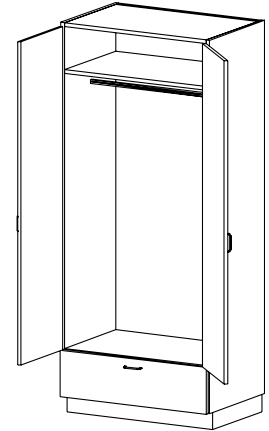
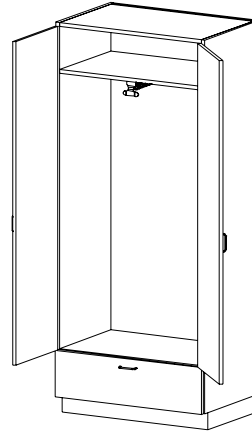
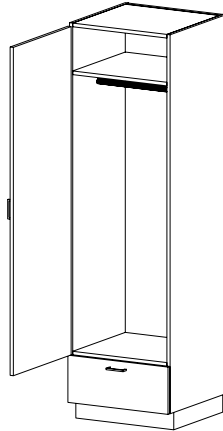
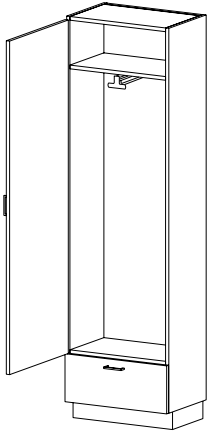
- Four adjustable shelves
- One fixed shelf
- One hanger rod w/ fixed shelf
- One pin tray
- Mirror mounted on right door
- Two letter-size file drawers
- Four hinged doors

84 | 86 | 88 | 90 | 95

23

36 | 39 | 42 | 45 | 48

Wardrobe Storage Tall Cabinets (cont'd)



CAT. NO **T2810** **T2820**
(Hinged L) (Hinged R)

DESCRIPTION **Wardrobe Storage with Clothing Carrier**

- One drawer
- Two fixed shelves
- One pull-out clothing carrier

CAT. NO **T2810** **T2820**
(Hinged L) (Hinged R)

DESCRIPTION **Wardrobe Storage with Rod**

- One drawer
- Two fixed shelves
- One hanger rod
- One hinged door

CAT. NO **T2860**

DESCRIPTION **Wardrobe Storage with Clothing Carrier**

- One drawer
- Two fixed shelves
- Two hinged doors

CAT. NO **T2860**

DESCRIPTION **Wardrobe Storage with Rod**

- One hanger rod
- One drawer
- Two fixed shelves
- Two hinged doors
- Any hanger rod placed in a cabinet greater than 40-inches wide, will have a load rating of 140 lbs. (evenly distributed).

HEIGHT 72 | 78 | 84

DEPTH 16 | 23

WIDTH 24

72 | 78 | 84

23

12 | 15 | 18 | 21 | 24

72 | 78 | 84

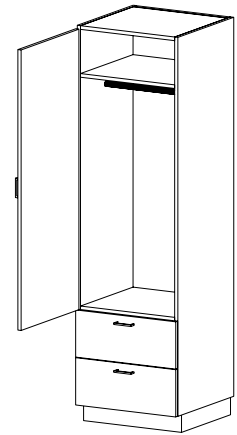
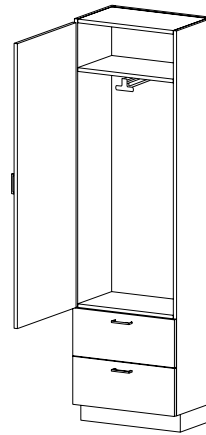
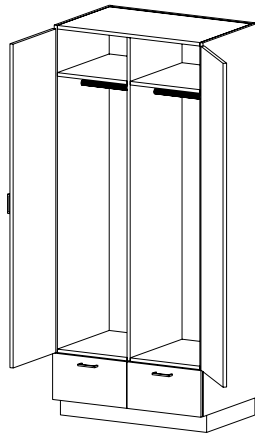
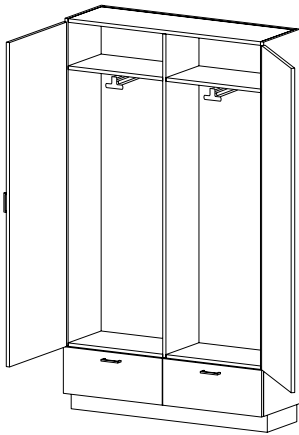
16 | 23

24 | 27 | 30 | 33 | 36 | 39 | 42 | 45 | 48

72 | 78 | 84

23

24 | 27 | 30 | 33 | 36 | 39 | 42 | 45 | 48



CAT. NO **T2840**

DESCRIPTION **Wardrobe Storage with Clothing Carriers**

- Two drawers
- Four fixed shelves
- Two pull-out clothing carriers
- One fixed vertical partition
- Two hinged doors

HEIGHT 72 | 78 | 84

DEPTH 16 | 23

WIDTH 48

CAT. NO **T2840**

DESCRIPTION **Wardrobe Storage with Rods**

- Two drawers
- Four fixed shelves
- Two hanger rods
- One fixed vertical partition
- Two hinged doors

72 | 78 | 84

23

27 | 30 | 33 | 36 | 39 | 42 | 45 | 48

CAT. NO **T2910** **T2920**
(Hinged L) (Hinged R)

DESCRIPTION **Wardrobe Storage with Clothing Carrier**

- Two drawers
- Two fixed shelves
- One pull-out clothing carrier
- One hinged door

72 | 78 | 84

16 | 23

24

CAT. NO **T2910** **T2920**
(Hinged L) (Hinged R)

DESCRIPTION **Wardrobe Storage with Rod**

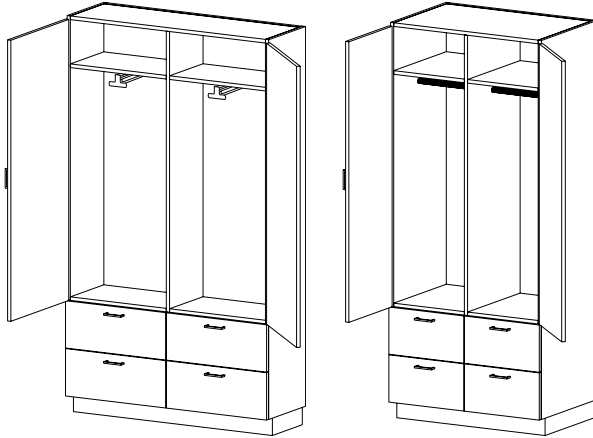
- Two drawers
- Two fixed shelves
- One hanger rod
- One hinged door

72 | 78 | 84

23

12 | 15 | 18 | 21 | 24

Wardrobe Storage Tall Cabinets (cont'd)


CAT. NO **T2940**

DESCRIPTION **Wardrobe Storage with Clothing Carriers**

- Four drawers
- Four fixed shelves
- Two pull-out clothing carriers
- One fixed vertical partition
- Two hinged doors

HEIGHT 72 | 78 | 84

DEPTH 16 | 23

WIDTH 48

T2940

Wardrobe Storage with Rods

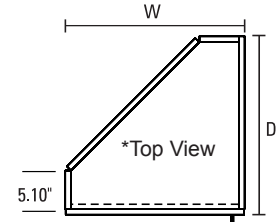
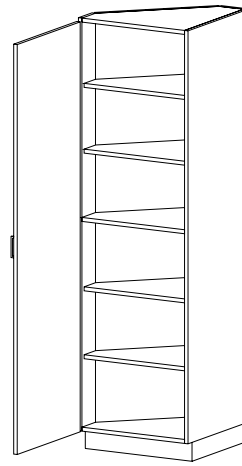
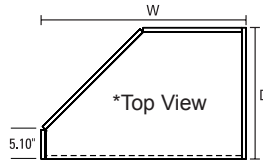
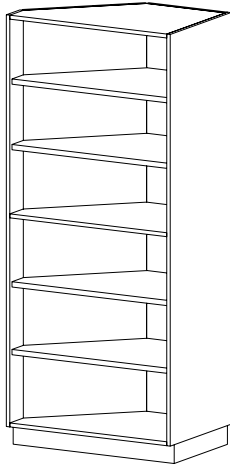
- Four drawers
- Four fixed shelves
- Two hanger rods
- One fixed vertical partition
- Two hinged doors

HEIGHT 72 | 78 | 84

DEPTH 23

WIDTH 27 | 30 | 33 | 36 | 39 | 42
45 | 48

Angled Back Tall Cabinets


CAT. NO T9200

DESCRIPTION **Open Angled Back Storage**

- Four adjustable shelves
- One centered fixed shelf
- Left rear corner at 45° angle

HEIGHT 72 | 78 | 84 | 86 | 88 | 90 | 95

DEPTH 12 | 15 | 22

WIDTH 24 | 27 | 30 | 33 | 36 | 39 | 42 | 45 | 48

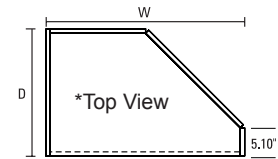
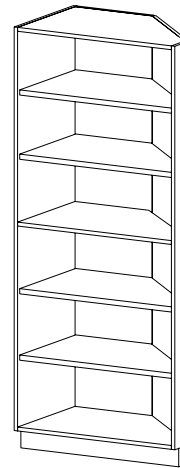
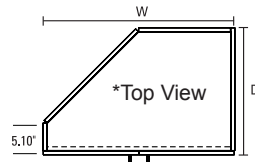
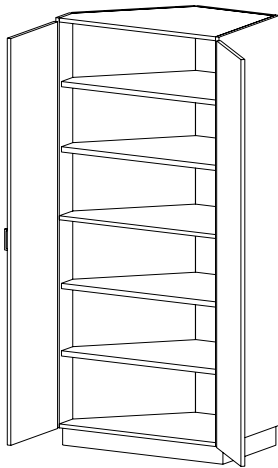
T9210 (Hinged L)
T9220 (Hinged R)

Angled Back Storage with Door

- Four adjustable shelves
- One centered fixed shelf
- One hinged door
- Left rear corner at 45° angle

HEIGHT 72 | 78 | 84 | 86 | 88 | 90 | 95

DEPTH 13 | 16 | 23

WIDTH 24

CAT. NO T9240

DESCRIPTION **Angled Back Storage with Doors**

- Four adjustable shelves
- One centered fixed shelf
- Two hinged doors
- Left rear corner at 45° angle

HEIGHT 72 | 78 | 84 | 86 | 88 | 90 | 95

DEPTH 13 | 16 | 23

WIDTH 24 | 27 | 30 | 33 | 36 | 39 | 42 | 45 | 48

T9300

Open Angled Back Storage

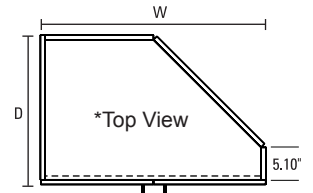
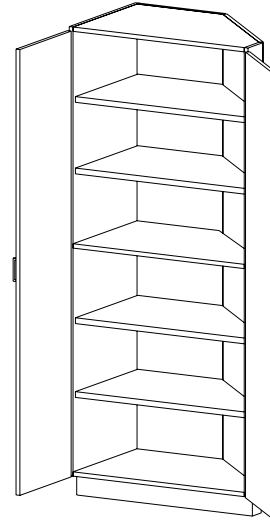
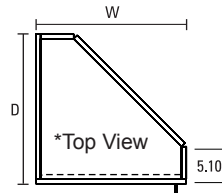
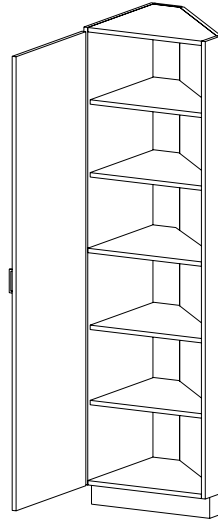
- Four adjustable shelves
- One centered fixed shelf
- Right rear corner at 45° angle

HEIGHT 72 | 78 | 84 | 86 | 88 | 90 | 95

DEPTH 12 | 15 | 22

WIDTH 24 | 27 | 30 | 33 | 36 | 39 | 42 | 45 | 48

Angled Back Tall Cabinets (cont'd)


CAT. NO **T9310** (Hinged L)

T9320 (Hinged R)

DESCRIPTION **Angled Back Storage with Door**

- Four adjustable shelves
- One centered fixed shelf
- One hinged door
- Right rear corner at 45° angle

HEIGHT 72 | 78 | 84 | 86 | 88 | 90 | 95

DEPTH 13 | 16 | 23

WIDTH 24

T9340

Angled Back Storage with Doors

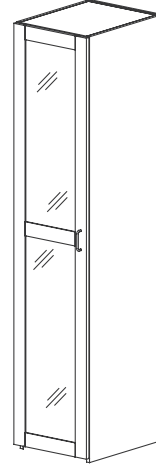
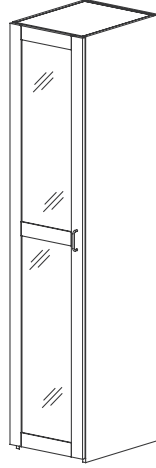
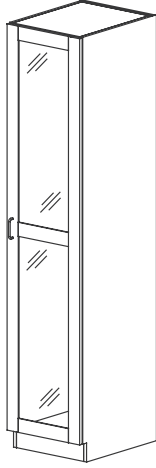
- Four adjustable shelves
- One centered fixed shelf
- Two hinged doors
- Right rear corner at 45° angle

72 | 78 | 84 | 86 | 88 | 90 | 95

13 | 16 | 23

24 | 27 | 30 | 33 | 36 | 39 | 42 | 45 | 48

Special Purpose Tall Cabinets



CAT. NO **T0780** (Hinged L) **T0790** (Hinged R)

CAT. NO **T0870** (Hinged L) **T0880** (Hinged R)

CAT. NO **T4710** (Hinged L) **T4720** (Hinged R)

DESCRIPTION **Skeleton Closet**
• w/hinged glass door and pull-out hanger

DESCRIPTION **Skeleton Closet**
• w/hinged glass door, open floor

DESCRIPTION **Torso Closet**
• w/hinged glass door and pull-out hanger

HEIGHT 84

84

84

DEPTH 16

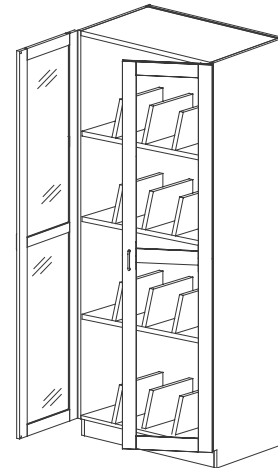
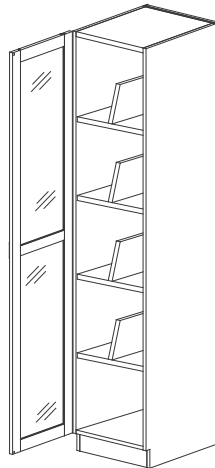
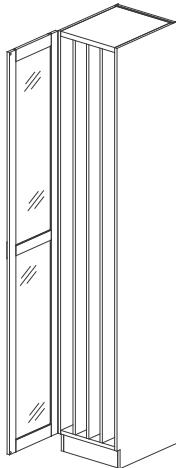
16

16

WIDTH 24

24

24



CAT. NO **T4670** (Hinged L) **T4680** (Hinged R)

CAT. NO **T0950** (Hinged L) **T0960** (Hinged R)

T0330

DESCRIPTION **Tubing Storage Cabinet**
• w/ glass door

DESCRIPTION **Microscope Cabinet**
• w/ glass door

DESCRIPTION **Microscope/Apparatus Cabinet**
• w/ glass doors

HEIGHT 84

84

84

DEPTH 16

16

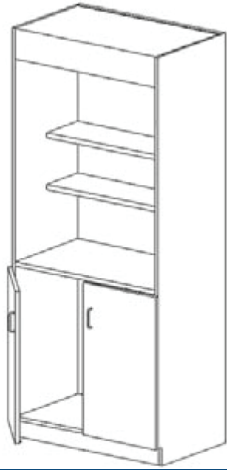
16 | 23

WIDTH 24

24

36 | 48

Special Purpose Tall Cabinets (cont'd)

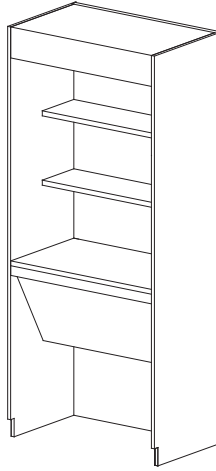

CAT. NO X1061

DESCRIPTION **Safety Closet**
 • w/ plastic laminate top. Shower and eyewash are not included

HEIGHT 84

DEPTH 23

WIDTH 36 | 48

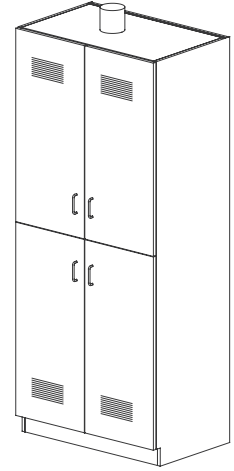

CAT. NO X1041

DESCRIPTION **Barrier Free (ADA) Safety Station**
 • w/ plastic laminate top. Shower and eyewash are not included

HEIGHT 84

DEPTH 22

WIDTH 36 | 48


CAT. NO SC290

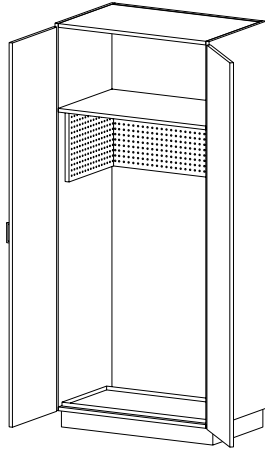
DESCRIPTION **Vented Lined Acid Storage**
 • w/ stainless steel duct stub

HEIGHT 84

DEPTH 23

WIDTH 36 | 48

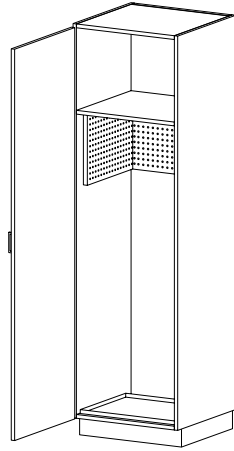
Special Purpose Tall Cabinets (cont'd)


CAT. NO **T4100**
DESCRIPTION

- Utility Storage with Doors**
- One fixed shelf
 - 12" h pegboard on sides and back
 - Metal drip pan
 - Two hinged doors

HEIGHT 72 | 78 | 84

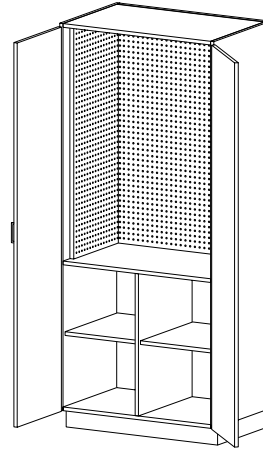
DEPTH 23

WIDTH 24 | 27 | 30 | 33 | 36 | 39 | 42 | 45 | 48

T4110 **T4120**
(Hinged L) (Hinged R)

- Utility Storage with Door**
- One fixed shelf
 - 12" h pegboard on sides and back
 - Metal drip pan
 - One hinged door

HEIGHT 72 | 78 | 84

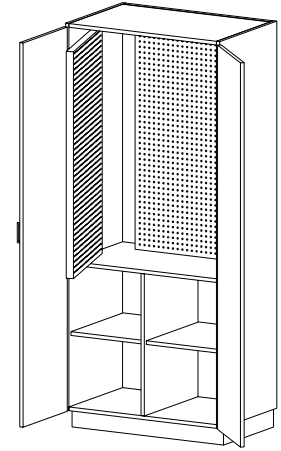
DEPTH 23

WIDTH 18 | 21 | 24

T4140
Tool Storage with Doors

- Upper compartment lined with pegboard
- Two adjustable shelves in lower compartment
- Two hinged doors
- Fixed vertical partition

HEIGHT 72 | 78 | 84

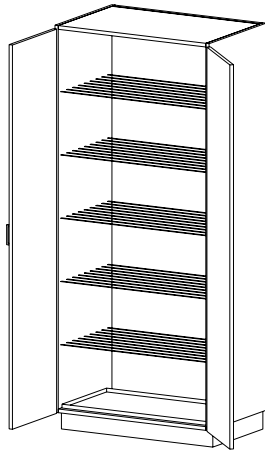
DEPTH 23

WIDTH 30 | 33 | 36 | 39 | 42 | 45 | 48

T4160
Tool Storage with Doors

- Upper compartment has two pivoting pegboard panels
- Two adjustable shelves in lower compartment
- Two hinged doors
- Fixed vertical partition

HEIGHT 72 | 78 | 84

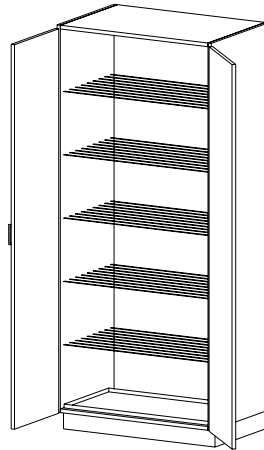
DEPTH 23

WIDTH 30 | 33 | 36 | 39 | 42 | 45 | 48

CAT. NO **T0540**
DESCRIPTION

- Damp Storage with Doors**
- Five adjustable vinyl-coated wire shelves
 - Metal drip pan
 - Two hinged doors with seal

HEIGHT 72 | 78 | 84 | 86 | 88 | 90 | 95

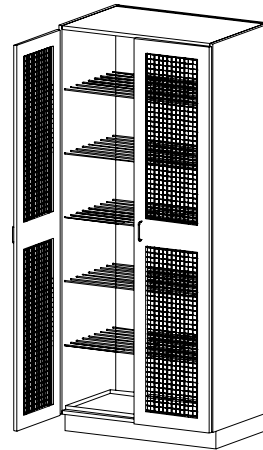
DEPTH 23

WIDTH 27 | 30 | 33 | 36 | 39 | 42 | 45 | 48

T0550

- Damp Storage with Doors**
- Five adjustable vinyl-coated wire shelves
 - Metal drip pan
 - Interior lined with galvanized metal
 - Two hinged doors with seal
 - Widths 39-48 require an additional bracket per shelf and an additional standard per cabinet.

HEIGHT 72 | 78 | 84 | 86 | 88 | 90 | 95

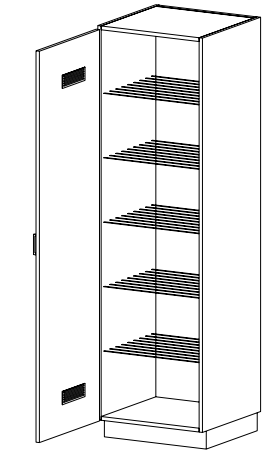
DEPTH 23

WIDTH 27 | 30 | 33 | 36 | 39 | 42 | 45 | 48

T0560
Drying Cabinets with Doors

- Five adjustable vinyl-coated wire shelves
- Metal drip pan
- Two ventilated hinged doors with expanded metal inserts

HEIGHT 72 | 78 | 84 | 86 | 88 | 90 | 95

DEPTH 23

WIDTH 27 | 30 | 33 | 36 | 39 | 42 | 45 | 48

T0610 **T0620**
(Hinged L) (Hinged R)

Vented Storage with Door

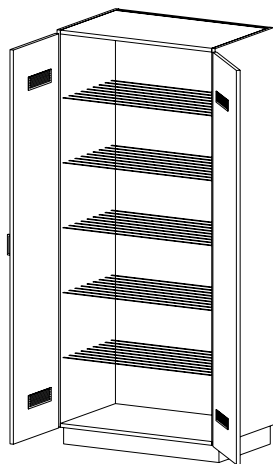
- Five adjustable vinyl-coated wire shelves
- One hinged door with louvered vents

HEIGHT 72 | 78 | 84 | 86 | 88 | 90 | 95

DEPTH 23

WIDTH 12 | 15 | 18 | 21 | 24

Special Purpose Tall Cabinets (cont'd)


CAT. NO **T0600**

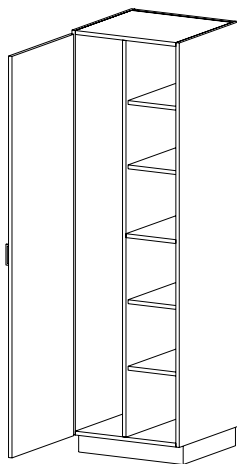
DESCRIPTION **Vented Storage with Doors**

- Adjustable vinyl-coated wire shelves
- Two hinged doors with louvered vents

HEIGHT 72 | 78 | 84 | 86 | 88 | 90 | 95

DEPTH 23

WIDTH 27 | 30 | 33 | 36 | 39 | 42
45 | 48


T4010
(Hinged L)

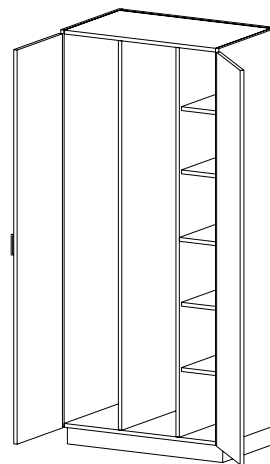
DESCRIPTION **Ironing Board Storage with Door**

- Heat-resistant shelves store six irons
- Space for ironing boards
- One hinged door
- One fixed vertical partition

72 | 78 | 84 | 86 | 88 | 90 | 95

23

21 | 24


T4030

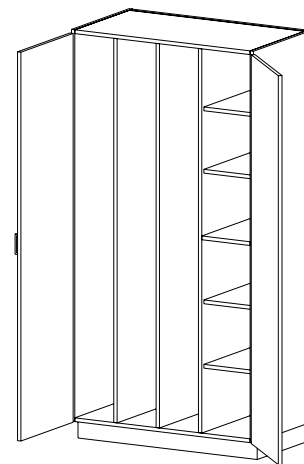
DESCRIPTION **Ironing Board Storage with Doors**

- Heat-resistant shelves store six irons
- Space for ironing boards
- Two hinged doors
- Two fixed vertical partitions

72 | 78 | 84 | 86 | 88 | 90 | 95

23

27 | 30 | 33 | 36


T4040

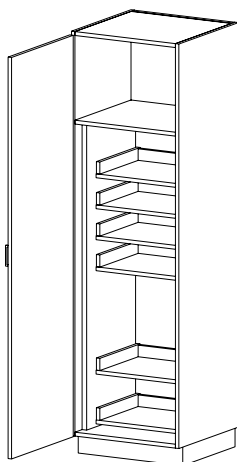
DESCRIPTION **Ironing Board Storage with Doors**

- Heat-resistant shelves store six irons
- Space for ironing boards
- Two hinged doors
- Three fixed vertical partitions

72 | 78 | 84 | 86 | 88 | 90 | 95

23

39 | 42 | 45 | 48


CAT. NO **T4510**
(Hinged L)

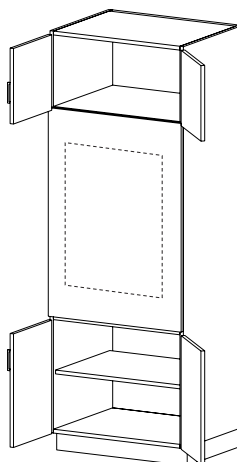
DESCRIPTION **Pantry Storage with Door**

- Six roll-out shelves
- One hinged door

HEIGHT 84

DEPTH 23

WIDTH 18 | 21 | 24


T4440

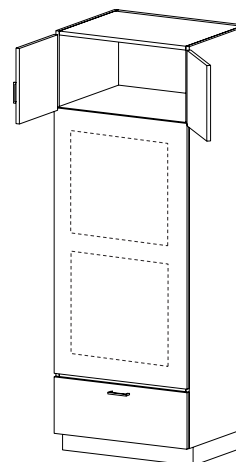
DESCRIPTION **Single Oven Cabinet with Doors**

- Two hinged doors above and below oven compartment
- One adjustable shelf below

84

23

30 | 33 | 36


T4460

DESCRIPTION **Double Oven Cabinet with Doors**

- Two hinged doors above oven compartment and one drawer below

84

23

30 | 33 | 36

Tall Index

General Information TC-2
General Storage Tall Cabinets TC-3

T0000	Open Storage.....	TC-3
T0110	Storage with Door.....	TC-3
T0120	Storage with Door.....	TC-3
T0100	Storage with Doors.....	TC-3
T0840	Storage with Sliding Doors.....	TC-3
T0310	Storage with Framed Glazed Door.....	TC-3
T0320	Storage with Framed Glazed Door.....	TC-3
T0300	Storage with Framed Glazed Doors.....	TC-3
T0860	Storage with Framed Glazed Sliding Doors.....	TC-3
T0680	Storage with Doors.....	TC-3
T0690	Storage with Doors.....	TC-4
T0160	Storage with Doors.....	TC-4
T0510	Storage with Doors.....	TC-4
T0520	Storage with Doors.....	TC-4
T0130	Storage with Doors.....	TC-4
T0460	Storage with Framed Glazed & Solid Door.....	TC-4
T0480	Storage with Sliding Glazed & Solid Doors.....	TC-4
T0440	Sloped-Shelf Display.....	TC-4
T0400	Storage with Doors.....	TC-4
T0410	Storage with Doors.....	TC-5
T0420	Storage with Doors.....	TC-5
T0430	Storage with Doors.....	TC-5
T1000	Open Cubicle Storage.....	TC-5
T1110	Cubicle Storage with Doors.....	TC-5
T1120	Cubicle Storage with Doors.....	TC-5
T1040	Cubicle Storage with Doors.....	TC-5
T3110	Storage with Door.....	TC-5
T3120	Storage with Door.....	TC-5
T3100	Storage with Doors.....	TC-5
T3430	Storage.....	TC-5
T3030	Door/Drawer Storage.....	TC-6
T3440	Storage.....	TC-6
T3040	Door/Drawer Storage.....	TC-6
T3140	Door/Drawer Storage with Framed Glazed Doors.....	TC-6
T3160	Door/Drawer Storage with Sliding Glazed Doors.....	TC-6
T3060	Sloped-Shelf Display.....	TC-6
T3230	Door/Drawer Storage.....	TC-6
T3240	Door/Drawer Storage.....	TC-6
T3500	File Drawer Storage.....	TC-7
T3510	File Drawer Storage with Door.....	TC-7
T3520	File Drawer Storage with Door.....	TC-7
T3550	File Drawer Storage with Door.....	TC-7
T3560	File Drawer Storage with Door.....	TC-7
T0810	Door w/o Bottom w/Door.....	TC-7
T0820	Door w/o Bottom w/Door.....	TC-7
T0800	Door/Drawer Storage with Sliding.....	TC-7
T0830	Storage without Bottom with Doors.....	TC-7

Corner Tall Cabinets TC-8

T0210	Blind Corner Storage.....	TC-8
T0220	Blind Corner Storage.....	TC-8
X9770	Open Diagonal Corner Cabinet.....	TC-8
X9790	Diagonal Corner Cabinet with Doors.....	TC-8
X9810	Diagonal Corner Cabinet with Door.....	TC-9
X9820	Diagonal Corner Cabinet with Door.....	TC-9
X9840	Diagonal Corner Cabinet with Doors.....	TC-9

Cubicle Storage Tall Cabinets TC-10

T0030	Open Storage.....	TC-10
T0090	Storage with Doors.....	TC-10
T1100	Open Cubicle Storage.....	TC-10
T1130	Open Cubicle Storage.....	TC-10
T1140	Open Cubicle Storage with Doors.....	TC-10
T1150	Open Cubicle Storage with Doors.....	TC-10
T1200	Open Cubicle Storage.....	TC-10
T1230	Open Cubicle Storage.....	TC-10
T1240	Cubicle Storage with Doors.....	TC-10
T1250	Cubicle Storage with Doors.....	TC-10
T1300	Open Cubicle Storage.....	TC-10
T1330	Open Cubicle Storage.....	TC-10
T1340	Cubicle Storage with Doors.....	TC-10
T1350	Cubicle Storage with Doors.....	TC-10
T1280	Storage with Doors.....	TC-11
T1270	Storage with Doors.....	TC-11

T1260	Cubicle Storage with Doors.....	TC-11
T1380	Storage with Doors.....	TC-11
T1370	Storage with Doors.....	TC-11
T1360	Storage with Doors.....	TC-11
T1610	Project Storage with Door.....	TC-11
T1620	Project Storage with Door.....	TC-11
T1600	Open Project Storage.....	TC-11
T1640	Project Storage with Doors.....	TC-12
T5210	Project Storage with Inset Doors.....	TC-12
T5220	Project Storage with Inset Doors.....	TC-12
T5310	Project Storage with Inset Doors.....	TC-12
T5320	Project Storage with Inset Doors.....	TC-12
T5410	Project Storage with Inset Doors.....	TC-12
T5420	Project Storage with Inset Doors.....	TC-12
T5510	Project Storage with Inset Doors.....	TC-12
T5520	Project Storage with Inset Doors.....	TC-12
T6210	Project Storage w/ Overlay Doors.....	TC-12
T6220	Project Storage w/ Overlay Doors.....	TC-12
T6310	Project Storage w/ Overlay Doors.....	TC-12
T6320	Project Storage w/ Overlay Doors.....	TC-12
T6410	Project Storage w/ Overlay Doors.....	TC-12
T6420	Project Storage w/ Overlay Doors.....	TC-12
T6510	Project Storage w/ Overlay Doors.....	TC-13
T6520	Project Storage w/ Overlay Doors.....	TC-13

Folio Storage Tall Cabinets TC-14

T1810	Storage with Door.....	TC-14
T1820	Storage with Door.....	TC-14
T1800	Open Folio Storage.....	TC-14
T1840	Folio Storage with Doors.....	TC-14
T1850	Open Folio Storage.....	TC-14
T1860	Folio Storage with Doors.....	TC-15
T1900	Vertical Folio Storage.....	TC-15
T1940	Vertical Folio Storage with Doors.....	TC-15
T1950	Vertical Folio Storage.....	TC-15
T1960	Vertical Folio Storage with Doors.....	TC-15

Tote Tray Storage Tall Cabinets TC-16

T1510	Tote Tray Storage with Door.....	TC-16
T1520	Tote Tray Storage with Door.....	TC-16
T1530	Tote Tray Storage with Doors.....	TC-16
T1450	Open Tote Tray Storage.....	TC-16
T1460	Tote Tray Storage with Doors.....	TC-16
T1550	Open Tote Tray Storage.....	TC-17
T1560	Tote Tray Storage with Doors.....	TC-17
T1480	Tote Tray Storage with Doors.....	TC-17
T1580	Tote Tray Storage with Doors.....	TC-17
T1410	Tote Tray Storage with Door.....	TC-17
T1420	Tote Tray Storage with Door.....	TC-17
T1430	Tote Tray Storage with Doors.....	TC-17
T1400	Open Tote Tray Storage.....	TC-17
T1440	Tote Tray Storage with Doors.....	TC-17
T1500	Open Tote Tray Storage.....	TC-18
T1540	Tote Tray Storage with Doors.....	TC-18
T1470	Tote Tray Storage with Doors.....	TC-18
T1570	Tote Tray Storage with Doors.....	TC-18

Wardrobe Storage Tall Cabinets TC-19

T2310	Wardrobe Storage with Clothing Carrier.....	TC-19
T2320	Wardrobe Storage with Clothing Carrier.....	TC-19
T2310	Wardrobe Storage with Rod.....	TC-19
T2320	Wardrobe Storage with Rod.....	TC-19
T2300	Wardrobe Storage with Clothing Carrier.....	TC-19
T2300	Wardrobe Storage with Rod.....	TC-19
T2340	Wardrobe Storage with Clothing Carrier.....	TC-19
T2340	Wardrobe Storage with Rod.....	TC-19
T2410	Wardrobe Storage with Rod.....	TC-19
T2420	Wardrobe Storage with Rod.....	TC-19
T2400	Wardrobe Storage with Rod.....	TC-19
T2510	Smock Storage with Door.....	TC-20
T2520	Smock Storage with Door.....	TC-20
T2500	Smock Storage with Doors.....	TC-20
T2610	Apron Storage with Door.....	TC-20
T2620	Apron Storage with Door.....	TC-20
T2600	Apron Storage with Doors.....	TC-20
T2010	Robe Storage with Clothing Carrier.....	TC-20
T2020	Robe Storage with Clothing Carrier.....	TC-20

Tall Index (cont'd)

T2010	Robe Storage with Rod.....	TC-20
T2020	Robe Storage with Rod.....	TC-20
T2000	Robe Storage with Clothing.....	TC-20
T2000	Robe Storage with Rod.....	TC-20
T2110	Uniform Storage with Door.....	TC-21
T2120	Uniform Storage with Door.....	TC-21
T2100	Uniform Storage with Doors.....	TC-21
T2210	Uniform/Hat Storage with Door.....	TC-21
T2220	Uniform/Hat Storage with Door.....	TC-21
T2200	Uniform/Hat Storage with Doors.....	TC-21
T2710	Wardrobe Storage with Rod and Shelves.....	TC-21
T2720	Wardrobe Storage with Rod and Shelves.....	TC-21
T2690	Wardrobe Storage with Rod and Shelves.....	TC-21
T2670	Wardrobe Storage with Rod and Shelves.....	TC-21
T2700	Wardrobe Storage with Rod and Shelves.....	TC-21
T2680	Wardrobe Storage with Rod and Shelves.....	TC-22
T2640	Wardrobe Storage with Rod and Shelves.....	TC-22
T2740	Wardrobe Storage with Rod and Shelves.....	TC-22
T2580	Wardrobe Storage with Adjustable Shelf and Drawers.....	TC-22
T2590	Wardrobe Storage with Adjustable Shelf and Drawers.....	TC-22
T2790	Teacher Wardrobe with Rod and Shelves.....	TC-22
T2770	Teacher Wardrobe with Rod and Shelves.....	TC-22
T2780	Teacher Wardrobe with Rod and Shelves.....	TC-22
T2870	Teacher Wardrobe with Rod and Shelves.....	TC-23
T2880	Teacher Wardrobe with Rod and Shelves.....	TC-23
T2800	Teacher Wardrobe with Rod and Shelves.....	TC-23
T2890	Teacher Wardrobe with Rod and Shelves.....	TC-23
T2900	Teacher Wardrobe with Rod and Shelves.....	TC-23
T2850	Teacher Wardrobe with Rod and Shelves.....	TC-23
T2830	Teacher Wardrobe with Rod and Shelves.....	TC-23
T2810	Wardrobe Storage with Clothing Carrier.....	TC-24
T2820	Wardrobe Storage with Clothing Carrier.....	TC-24
T2810	Wardrobe Storage with Rod.....	TC-24
T2820	Wardrobe Storage with Rod.....	TC-24
T2860	Wardrobe Storage with Clothing Carrier.....	TC-24
T2860	Wardrobe Storage with Rod.....	TC-24
T2840	Wardrobe Storage with Clothing Carriers.....	TC-24
T2840	Wardrobe Storage with Rods.....	TC-24
T2910	Wardrobe Storage with Clothing Carrier.....	TC-24
T2920	Wardrobe Storage with Clothing Carrier.....	TC-24
T2910	Wardrobe Storage with Rod.....	TC-24
T2920	Wardrobe Storage with Rod.....	TC-24
T2940	Wardrobe Storage with Clothing Carriers.....	TC-25
T2940	Wardrobe Storage with Rods.....	TC-25

Angled Back Tall Cabinets.....	TC-26	
T9200	Open Angled Back Storage.....	TC-26
T9210	Angled Back Storage with Door.....	TC-26
T9220	Angled Back Storage with Door.....	TC-26
T9240	Angled Back Storage with Doors.....	TC-26
T9300	Open Angled Back Storage.....	TC-26
T9310	Angled Back Storage with Door.....	TC-27

T9320	Angled Back Storage with Door.....	TC-27
T9340	Angled Back Storage with Doors.....	TC-27

Special Purpose Tall Cabinets.....	TC-28	
T0780	Skeleton Closet.....	TC-28
T0790	Skeleton Closet.....	TC-28
T0870	Skeleton Closet.....	TC-28
T0880	Skeleton Closet.....	TC-28
T4710	Torso Closet.....	TC-28
T4720	Torso Closet.....	TC-28
T4670	Tubing Storage Cabinet.....	TC-28
T4680	Tubing Storage Cabinet.....	TC-28
T0950	Microscope Cabinet.....	TC-28
T0960	Microscope Cabinet.....	TC-28
T0330	Microscope/Apparatus Cabinet.....	TC-28
X1061	Safety Closet.....	TC-29
X1041	Barrier Free (ADA) Safety Station.....	TC-29
SC290	Vented Lined Acid Storage.....	TC-29
T4100	Utility Storage with Doors.....	TC-30
T4110	Utility Storage with Door.....	TC-30
T4120	Utility Storage with Door.....	TC-30
T4140	Tool Storage with Doors.....	TC-30
T4160	Tool Storage with Doors.....	TC-30
T0540	Damp Storage with Doors.....	TC-30
T0550	Damp Storage with Doors.....	TC-30
T0560	Drying Cabinets with Doors.....	TC-30
T0610	Vented Storage with Door.....	TC-30
T0620	Vented Storage with Door.....	TC-30
T0600	Vented Storage with Doors.....	TC-31
T4010	Ironing Board Storage with Door.....	TC-31
T4020	Ironing Board Storage with Door.....	TC-31
T4030	Ironing Board Storage with Doors.....	TC-31
T4040	Ironing Board Storage with Doors.....	TC-31
T4510	Pantry Storage with Door.....	TC-31
T4520	Single Oven Cabinet with Doors.....	TC-31
T4440	Pantry Storage with Door.....	TC-31
T4460	Double Oven Cabinet with Doors.....	TC-31

Tall Index.....	TC-32
------------------------	--------------