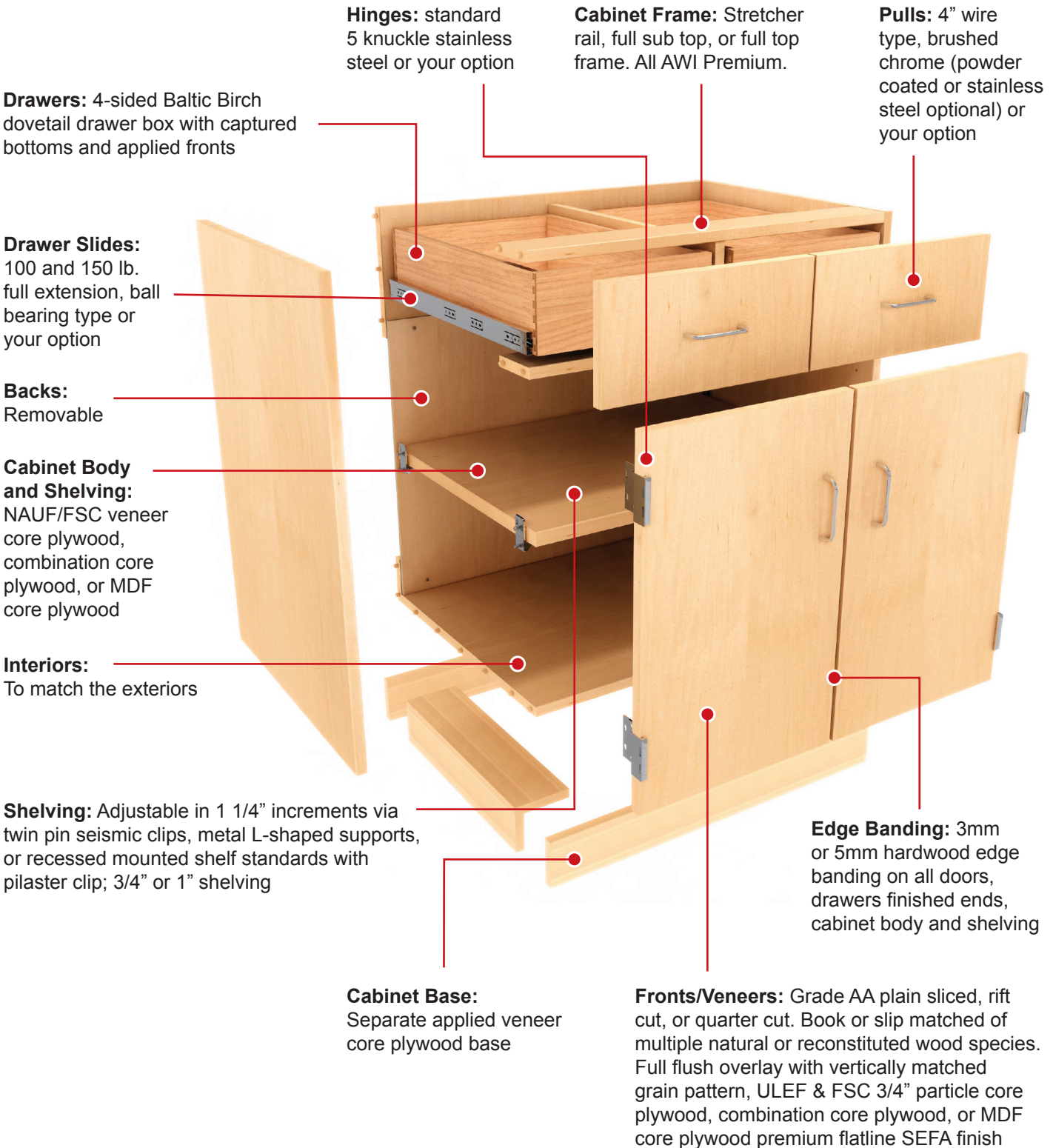


Contents

E-Line Series	WP-2
ColorSplash Series	WP-4
Fusion Series	WP-6
Educator Series	WP-8
Traditional Wood Series 1 and 2	WP-10
Traditional Wood Series 3	WP-12
M-Line (Painted MDF Casework)	WP-14
Q-Line Series	WP-16

E-Line Series

Premium Wood Casework with options to meet any specification



E-Line Wood Casework Options Menu

(Options in Bold are standard)

Base Cabinet Construction

- Full Stretcher Frame
- Full Sub Top
- Full Top Frame

Intermediate Rails

(Intermediate rails always provided when locks are specified.)

- None
- Between drawers and between drawers over doors

Cabinet Veneer Species and Cut

- Red Oak – Plain Sliced
- Red Oak – Rift Cut
- White Oak – Plain Sliced
- White Oak – Rift Cut
- White Maple – Plain Sliced
- White Maple – Quarter Cut
- White Birch – Rotary Cut
- Natural Bamboo (Edge Grain)
- Caramelized Bamboo (Edge Grain)
- Other species and cuts are available upon request

Green Options

(Options listed can help to contribute to specific LEED points, however the total project requirements must be met in order to achieve the desired LEED points. 100% Recycled and recovered content only applies to PC and MDF.)

- None
- NAUF
- FSC
- NAUF/FSC
- 100% Recycled and Recovered Content
- 100% Recycled and Recovered Content, NAUF
- 100% Recycled and Recovered Content, FSC
- 100% Recycled and Recovered Content, NAUF/FSC

Cabinet Body Substrate

- Particleboard Core
- MDF Core
- Veneer Core
- Combination Core
- Other Cores are available upon request

Door and Drawer Substrate

(CiF does not recommend using Veneer Core as a substrate for doors and drawer fronts.)

- Particleboard Core
- MDF Core
- Combination Core
- Particleboard Core with hardwood stile on hinged edge

Unexposed and Concealed Ends

- Hardwood veneer with sealer
- Same species and finish as exposed

Cabinet Base

- Separate applied veneer-core base
- Separate applied waterproof plywood base (additional cost)
- Cabinet end to floor (additional cost)

Base Cabinet Backs

(Exposed backs will match the veneer species and cut of the exposed cabinet ends.)

- Semi-exposed: White Hardboard
- Semi-exposed: finished plywood with matching interior grade veneer
- Unexposed (drawer units): no backs
- Unexposed (drawer units): White Hardboard

Wall and Tall Cabinet Backs

(Exposed backs will match the veneer species and cut of the exposed cabinet ends.)

- Semi-exposed: White Hardboard
- Semi-exposed: finished plywood with matching interior grade veneer

Door and Drawer Front Overlay

(Reveals between doors and drawer fronts on the face of the same cabinet will always be 1/8". Two adjacent cabinets will have double the reveal when install side by side.)

- Reveal Overlay (3/8" reveal on cabinet end)
- Full Flush Overlay (1/16" reveal on cabinet end)

Grain Direction on Doors and Drawer Fronts

- Vertically matched grain per cabinet
- Vertically matched grain and center balanced by cabinet
- Vertically matched grain and sequence matched per Elevation

Cabinet Edge banding

- 1/8" (3mm) rolled type banding
- 5mm solid stick banding

Base Cabinet Shelves

(Wall and tall cabinet shelves default will be full depth.)

- 3/4 depth shelves (open base cabinet shelves will default to full depth)
- Full depth shelves
- Split depth shelves

Drawer Box Construction

- Fully dovetailed, 9 ply Baltic Birch, with 1/4" white TFM on MDF core bottoms
- Fully dovetailed, 9 ply Baltic Birch, with 1/2" – 9 ply Baltic Birch plywood bottoms

Drawer Slides for Standard Drawers

- Full extension, ball bearing, zinc, 100 lb. (DS100)
- Full extension, ball bearing, zinc, 150 lb. (DS150)
- Soft closing, full extension, ball bearing, zinc, 100 lb. (DS300).
 - Not recommended for drawers over 24" wide
- Soft closing, full extension, ball bearing, zinc, 150 lb. (DS170)
 - Can be used on any drawer but recommended for drawers over 24" wide
- Other, specify

Drawer Slides for File Drawers

- Full extension, ball bearing, zinc, 100 lb. (DS100)
- Full extension, ball bearing, zinc, 150 lb. (DS150)
- Soft closing, full extension, ball bearing, zinc, 150 lb. (DS170)
- Other, specify

Hinges

(Five knuckle hinges will require a door catch. Both three knuckle and concealed hinges have a self-closing mechanism.)

- Heavy duty, five knuckle – painted (HH020)
- Heavy duty, five knuckle – brushed chrome (HH040)
- Heavy duty, five knuckle – stainless steel (HH010)
- Medium duty, concealed, 170 open – nickel plated (HH050)
- Medium duty, concealed, 110 open – nickel plated (HH060)
- Medium duty, three knuckle, 270 open – nickel plated (HH080)
- Other, specify

Door Catches

- Metal roller catch (RC010)
- Magnetic catch (MC010)

Pulls

- 96mm wire pull – brushed chrome (DP050)
- 96mm wire pull – bright chrome (DP060)
- 96mm wire pull – stainless steel (DP190)
- 96mm wire pull – painted (DP170)
- 4" cast pull – aluminum with flared ends (DP070)
- Metal flush pull, black (DP120)
- 4" D pull, aluminum (DP040)
- Semi-recessed pull, nickel (DP100)
- Oversized semi-recessed pull (DP110)
- Other, specify

Shelf Supports

- Angled Steel Pin (SC220)
- Plastic, seismic type (SC240)

Lock Locations

- None
- Where indicated or specified
- File drawers only
- All drawers
- All doors
- All doors and drawers

Lock Type

- 5 disc cam lock (LK010)
- 5 pin cam lock (LK030)
- 5 pin dead bolt lock (LK040)
- Other, specify

Keying for Locks

- Keyed alike
- Keyed alike per room
- Keyed differently (Security panels will be provided between drawers)

Tall Door Locks

(Where indicated or specified)

- Same as other locks
- 3-point locking handle (LK050)
- Other, specify

Padlock Hasps

(Where indicated or specified)

- Cam-type padlock-able hasp, Olympus DCN (PH010)
- Padlock loop and guard plate (PH020)

Glass for Glazed Doors

- Tempered
- Laminated Safety

Label Holders

- None
- File drawer only
- All drawers (including file drawers)
- All drawers and doors (double doors will receive one)

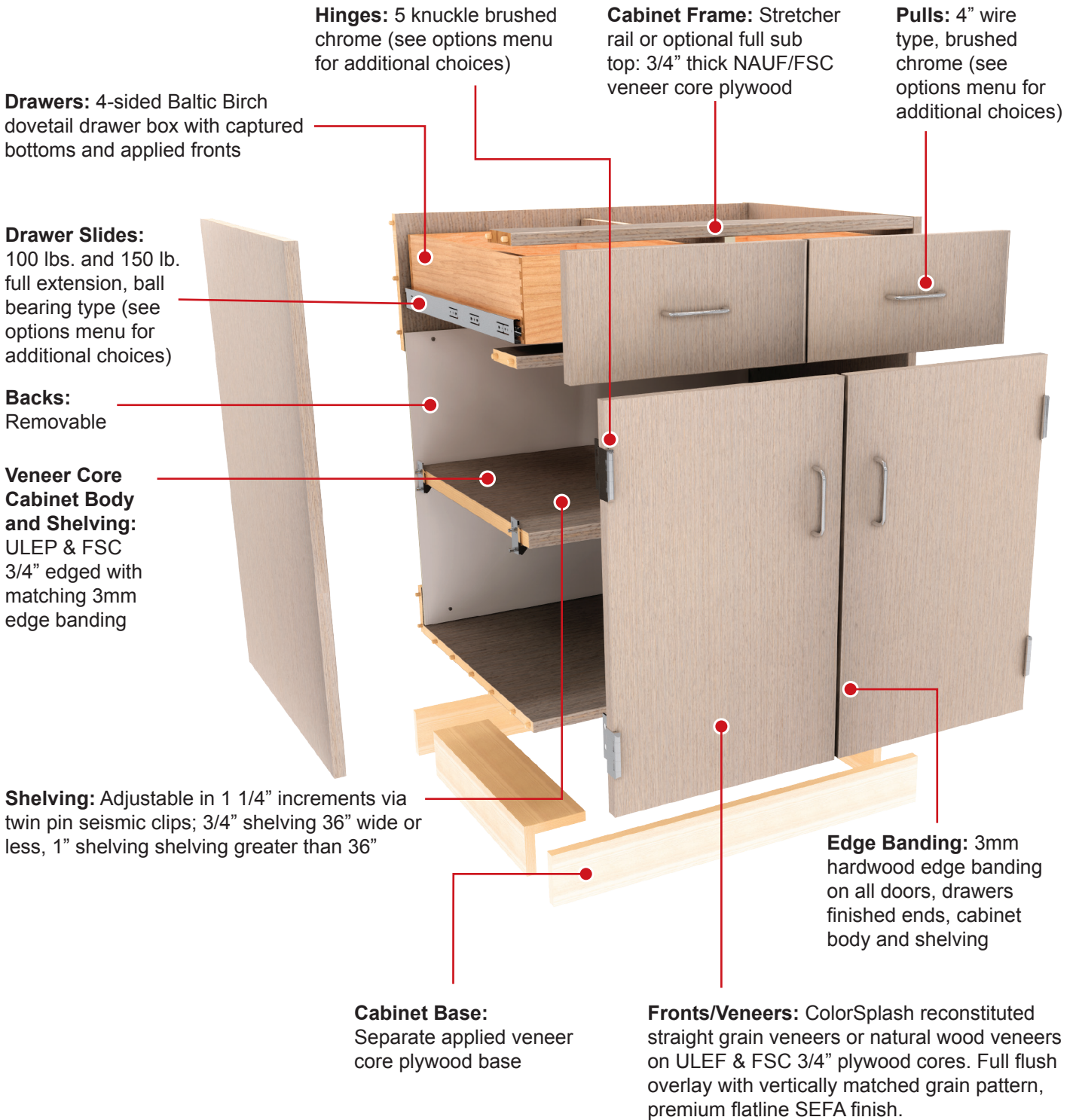
Number Plate Locations

(Shipped loose for field installation)

- None
- Where indicated or specified
- File drawers only
- All drawers
- All doors (double doors will receive one)
- All doors and drawers (double doors will receive one)
- Where there are Padlock hasps

ColorSplash Series

Premium Reconstituted Wood Casework with ColorSplash Stains



ColorSplash Wood Casework Options Menu

(Options in Bold are standard)

ColorSplash Guidelines

- ColorSplash stains can only be applied to straight grain, light colored Reconstituted Veneers
- Door and Drawer fronts for each cabinet must be the same color (except split height tall cabinets)
- BIM required for CS3 and CS4 projects
- One cabinet can have up to 3 colors (face, body, and back) up to 13 colors can be used on a single project
- A set up charge will be applied for each additional color used on a project
- Please refer to the ColorSplash Color Chart and Possibilities Guide for additional details.

Base Cabinet Construction

- Full Stretcher Frame
- Full Sub Top

Intermediate Rails

Intermediate rails always provided when locks are specified.

- None
- Between drawers and between drawers over doors

Cabinet Veneer (except components selected for natural veneer for CS 4 only):

- Straight-grain, light colored reconstituted veneer**

Natural Veneer (for CS 4 only, cabinet components or fronts that are selected for natural veneer):

- Red Oak – Plain Sliced
- Red Oak – Rift cut
- White Maple – Plain Sliced
- White Maple – Quarter-cut
- Other

Green Standard Features

Can help to contribute to specific LEED points, however the total project requirements must be met in order to achieve the desired LEED points. 100% Recycled and recovered content only applies to particle-core plywood.

- NAUF/FSC
- Recycled Content to extent possible (particle-core plywood only)**

Cabinet Body Substrate

- Veneer Core

Door and Drawer Substrate

- Particleboard Core

Unexposed and Concealed Ends

- Hardwood veneer with sealer**
- Same species and finish as exposed ends

Cabinet Base

- Separate applied veneer-core base**
- Separate applied waterproof plywood base (additional cost)
- Cabinet end to floor (additional cost)

Base Cabinet Backs

All Lines: Except for CS 4, exposed backs will match the veneer species and cut of the exposed cabinet ends. CS 4 also available with natural veneer backs.

- Semi-exposed: White Hardboard**
- Semi-exposed: straight-grain plywood to match cabinet interior

- Unexposed (drawer units): no backs**

- Unexposed (drawer units): White Hardboard

Also Available for CS 4

Selected components only:

- Semi-exposed: plywood with natural veneer
- Exposed: plywood with natural veneer

Wall Cabinet Backs

All Lines: Except for CS 4, exposed backs will match the veneer species and cut of the exposed cabinet ends. CS 4 also available with natural veneer backs.

- Semi-exposed: White Hardboard**
- Semi-exposed: straight-grain plywood to match cabinet interior

Also Available for CS 4

Selected components only:

- Semi-exposed: plywood with natural veneer
- Exposed: plywood with natural veneer

Tall Cabinet Backs

All Lines: Except for CS 4, exposed backs will match the veneer species and cut of the exposed cabinet ends. CS 4 also available with natural veneer backs.

- Semi-exposed: White low-pressure laminate**
- Semi-exposed: straight-grain plywood to match cabinet interior

Also Available for CS 4

Selected components only:

- Semi-exposed: plywood with natural veneer
- Exposed: plywood with natural veneer

Door and Drawer Front Overlay

Reveals between doors and drawer fronts on the face of the same cabinet will always be 1/8". Two adjacent cabinets will have double the reveal when install side by side.

- Full Flush Overlay (1/16" reveal on cabinet end)**

Grain Direction on Doors and Drawer Fronts

- Vertically matched grain per cabinet**

Cabinet Edge banding

- 1/8" (3mm) rolled type banding

Base Cabinet Shelves

- 3/4-depth shelves (open cabinet shelves will be full depth)

Wall and Tall Cabinet Shelves

- Full-depth shelves

Drawer Box Construction

- Fully dovetailed, 9 ply Baltic Birch, with 1/4" white TFM on MDF core bottoms**
- Fully dovetailed, 9 ply Baltic Birch, with 1/2" - 9 ply Baltic Birch plywood bottoms

Drawer Slides for Standard Drawers

- Full extension, ball bearing, zinc, 100 lb.** (DS100)
- Full extension, ball bearing, zinc, 150 lb. (DS150)
- Soft closing, full extension, ball bearing, zinc, 100 lb. (DS300).
 - Not recommended for drawers over 24" wide
- Soft closing, full extension, ball bearing, zinc, 150 lb. (DS170)
 - Can be used on any drawer but recommended for drawers over 24" wide
- Other, specify

Drawer Slides for File Drawers

- Full extension, ball bearing, zinc, 100 lb. (DS100)
- Full extension, ball bearing, zinc, 150 lb.** (DS150)
- Soft closing, full extension, ball bearing, zinc, 150 lb. (DS170)
- Other, specify

Hinges

Five knuckle hinges will require a door catch. Both three knuckle and concealed hinges have a self-closing mechanism.

- Heavy duty, five knuckle –painted (HH020)
- Heavy duty, five knuckle - brushed chrome (HH040)**
- Heavy duty, five knuckle - stainless steel (HH010)
- Medium duty, concealed, 170° opening - nickel plated (HH050)
- Medium duty, concealed, 110° opening - nickel plated (HH060)
- Medium duty, three knuckle, 270° opening - nickel plated (HH080)
- Other, specify

Door Catches

- Metal roller catch (RC010)**
- Magnetic catch (MC010)

Pulls

- 96 mm wire pull - brushed chrome (DP050)**
- 96mm wire pull - bright chrome (DP060)
- 96mm wire pull - stainless steel (DP190)
- 96mm wire pull – painted (DP170)

- 4" cast pull – aluminum with flared ends (DP070)
- Metal flush pull, black (DP120)
- 4" D pull, aluminum (DP040)
- Semi-recessed pull, nickel (DP100)
- Oversized semi-recessed pull (DP110)
- Other, specify

Shelf Supports

- Angled Steel Pin (SC220)
- Plastic, seismic type (SC240)**

Lock Locations

- None
- Where indicated or specified
- File drawers only
- All drawers
- All doors
- All doors and drawers

Lock Type

- 5 disc cam lock (LK010)**
- 5 pin cam lock (LK030)
- 5 pin dead bolt lock (LK040)
- Other, specify

Keying for Locks

- Keyed alike
- Keyed alike per room
- Keyed differently (Security panels will be provided between drawers)

Tall Door Locks

(Where indicated or specified)

- Same as other locks**
- 3-point locking handle (LK050)
- Other, specify

Padlock Hasps

(Where indicated or specified)

- Cam-type padlock-able hasp, Olympus DCN (PH010)**
- Padlock loop and guard plate (PH020)

Glass for Glazed Doors

- Tempered**
- Laminated Safety

Label Holders

- None
- File drawer only
- All drawers (including file drawers)
- All drawers and doors (double doors will receive one)

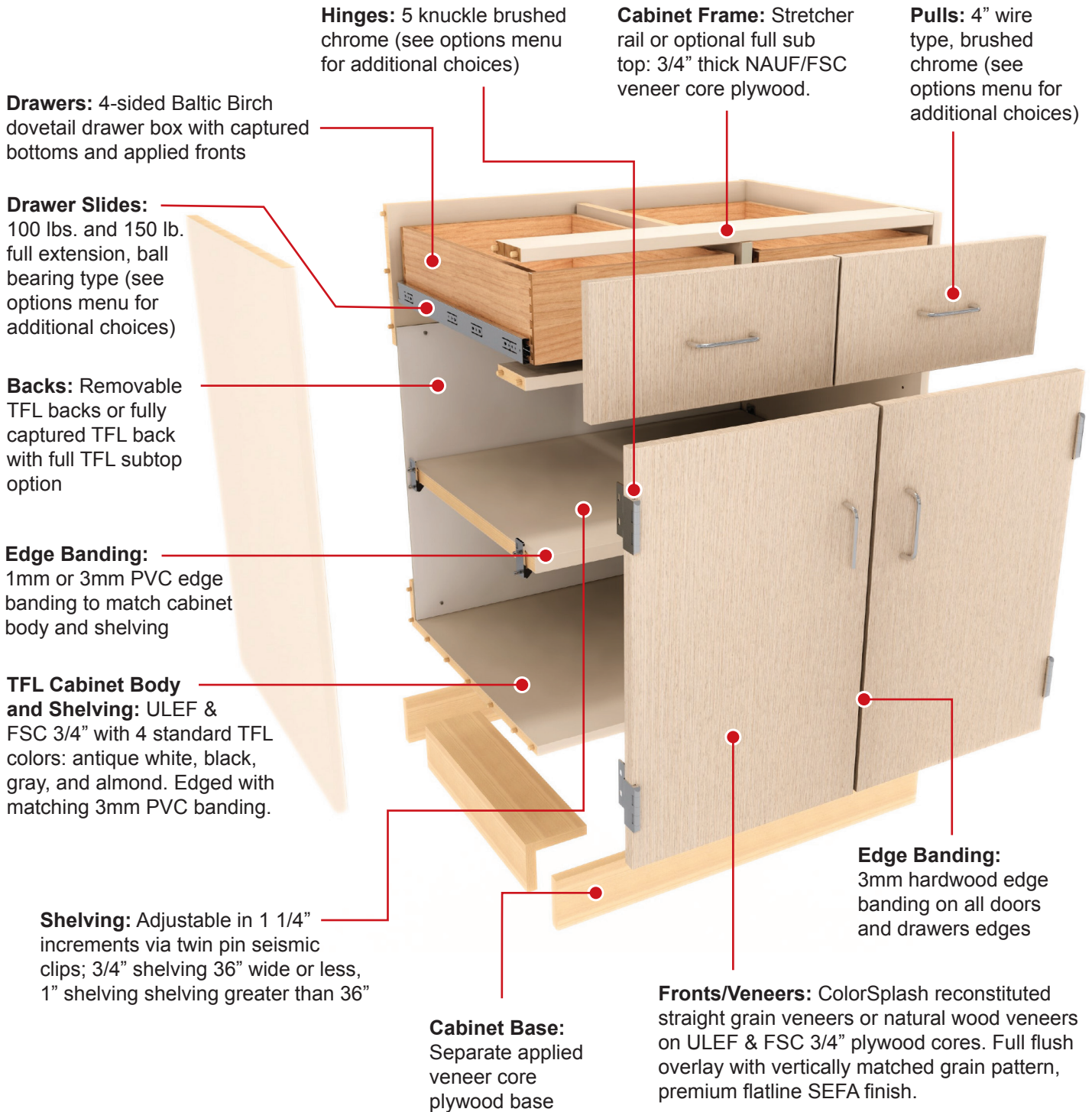
Number Plate Locations

Shipped loose for field installation

- None
- Where indicated or specified
- File drawers only
- All drawers
- All doors (double doors will receive one)
- All doors and drawers (double doors will receive one)
- Where there are Padlock hasps

Fusion Series

Thermally Fused Laminate Casework with Premium Wood Faces



Fusion Casework Options Menu

(Options in Bold are standard)

Base Cabinet Construction

- Full Stretcher Frame
- Full Sub Top

Intermediate Rails

(Intermediate rails always provided when locks are specified)

- None
- Between drawers and between drawers over doors

Standard Green Features

- NAUF/FSC
- Post-industrial recycled content as possible

Cabinet Body Color (Low-pressure laminate (TFL))

- Antique White
- Gray
- Almond
- Black

Exposed Ends

- Low-pressure laminate (TFL)
- High-pressure plastic laminate (choose color)

Cabinet Body Substrate

- Particleboard Core

Door and Drawer Front Veneer

- Straight grain light reconstituted veneer
- Red oak, plain sliced
- White maple, plain sliced

Door and Drawer Substrate

- Particleboard Core

Cabinet Base

- Separate applied veneer-core base
- Separate applied waterproof plywood base (additional cost)

Semi-exposed Base Cabinet and Tall Cabinet Backs

- White Hardboard
- Low-pressure laminate (TFL) to match case body, 1/2"

Unexposed Base Cabinet Backs (drawer units)

- No backs
- White Hardboard

Semi-exposed Tall Cabinet Backs

- Low-pressure laminate (TFL) to match case body, 1/2"

Exposed, Base, Wall and Tall Cabinet Backs

- Low-pressure laminate (TFL) to match case body, 1/2"

Cabinet Edge banding

- 3mm PVC to match case body

Door and Drawer Front Overlay

(Reveals between doors and drawer fronts on the face of the same cabinet will always be 1/8". Two adjacent cabinets will have double the reveal when install side by side.)

- Full Flush Overlay (1/16" reveal on cabinet end)

Grain Direction on Doors and Drawer Fronts

- Vertically matched grain per cabinet

Door and drawer front Edge banding

- 1/8" (3mm) rolled-type hardwood

Base Cabinet Shelves

(Wall and tall cabinet shelves default will be full depth.)

- 3/4 depth shelves (open base cabinet shelves will default to full depth)
- Full depth shelves

Drawer Box Construction

- Fully dovetailed, 9 ply Baltic Birch, with 1/4" white TFL on MDF core bottoms
- Fully dovetailed, 9 ply Baltic Birch, with 1/2" – 9 ply Baltic Birch plywood bottoms

Drawer Slides for Standard Drawers

- Full extension, ball bearing, zinc, 100 lb. (DS100)
- Full extension, ball bearing, zinc, 150 lb. (DS150)
- Soft closing, full extension, ball bearing, zinc, 100 lb. (DS300).
 - Not recommended for drawers over 24" wide
- Soft closing, full extension, ball bearing, zinc, 150 lb. (DS170)
 - Can be used on any drawer but recommended for drawers over 24" wide
- Other, specify

Drawer Slides for File Drawers

- Full extension, ball bearing, zinc, 100 lb. (DS100)
- Full extension, ball bearing, zinc, 150 lb. (DS150)
- Soft closing, full extension, ball bearing, zinc, 150 lb. (DS170)
- Other, specify

Hinges

(Five knuckle hinges will require a door catch. Both three knuckle and concealed hinges have a self-closing mechanism.)

- Heavy duty, five knuckle – painted (HH020)
- Heavy duty, five knuckle – brushed chrome (HH040)
- Heavy duty, five knuckle – stainless steel (HH010)
- Medium duty, concealed, 170 open – nickel plated (HH050)
- Medium duty, concealed, 110 open – nickel plated (HH060)
- Medium duty, three knuckle, 270 open – nickel plated (HH080)
- Other, specify

Door Catches

- Metal roller catch (RC010)
- Magnetic catch (MC010)

Pulls

- 96mm wire pull – brushed chrome (DP050)
- 96mm wire pull – bright chrome (DP060)
- 96mm wire pull – stainless steel (DP190)
- 96mm wire pull – painted (DP170)
- 4" cast pull – aluminum with flared ends (DP070)
- Metal flush pull, black (DP120)
- 4" D pull, aluminum (DP040)
- Semi-recessed pull, nickel (DP100)
- Oversized semi-recessed pull (DP110)
- Other, specify

Shelf Supports

- Angled Steel Pin (SC220)
- Plastic, seismic type (SC240)

Lock Locations

- None
- Where indicated or specified
- File drawers only
- All drawers
- All doors
- All doors and drawers

Lock Type

- 5 disc cam lock (LK010)
- 5 pin cam lock (LK030)
- 5 pin dead bolt lock (LK040)
- Other, specify

Keying for Locks

- Keyed alike
- Keyed alike per room
- Keyed differently (Security panels will be provided between drawers)

Tall Door Locks

(Where indicated or specified)

- Same as other locks
- 3-point locking handle (LK050)
- Other, specify

Padlock Hasps

(Where indicated or specified)

- Cam-type padlock-able hasp, Olympus DCN (PH010)
- Padlock loop and guard plate (PH020)

Glass for Glazed Doors

- Tempered
- Laminated Safety

Label Holders (optional)

- File drawer only
- All drawers (including file drawers)
- All drawers and doors (double doors will receive one)

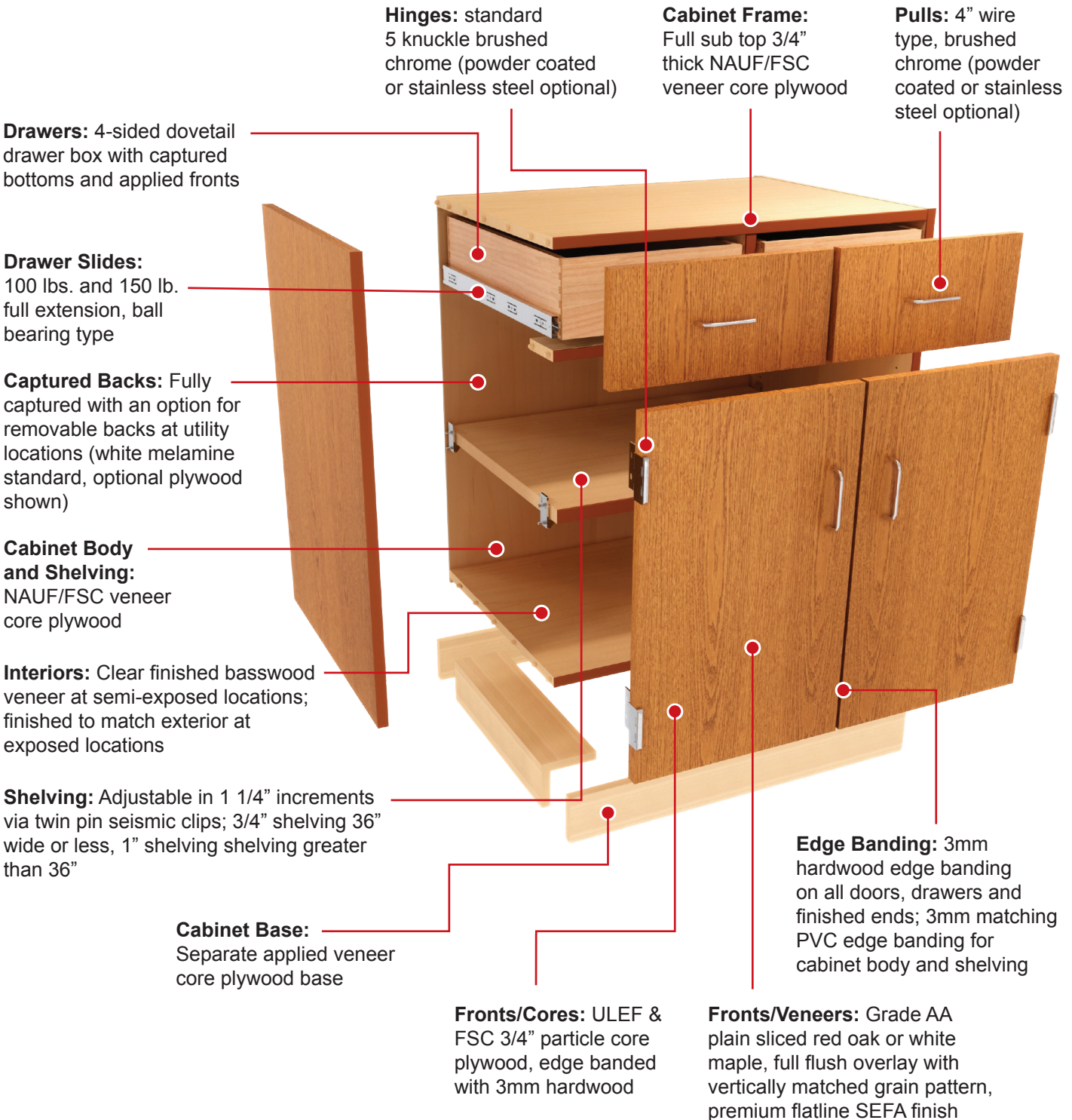
Number Plate Locations

(Shipped loose for field installation)

- None
- Where indicated or specified
- File drawers only
- All drawers
- All doors (double doors will receive one)
- All doors and drawers (double doors will receive one)
- Where there are Padlock hasps

Educator Series

Wood Casework designed to meet your budget



Educator Series Casework Options Menu

(Options in Bold are standard)

Cabinet Series

- Educator 1 – with integral finished ends
- Educator 2 – with site-applied finished ends (front edges of applied ends are flush with cabinet fronts)

Base Cabinet Construction

- Full Sub Top

Intermediate Rails

(Intermediate rails always provided when locks are specified)

- None
- Between drawers and between drawers over doors

Cabinet Veneer Species and Cut

- Red Oak – Plain Sliced
- White Maple – Plain Sliced

Green Options

(Options listed can help to contribute to specific LEED points, however the total project requirements must be met in order to achieve the desired LEED points. 100% Recycled and recovered content only applies to PC and MDF.)

- ULEF/NAUF/FSC
- 100% Recycled and Recovered Content, ULEF/ FSC

Cabinet Body Substrate

- Veneer Core

Door and Drawer Substrate

(CiF does not recommend using Veneer Core as a substrate for doors and drawer fronts.)

- Particleboard Core

Semi-exposed veneer (cabinet interiors)

- Basswood veneer with clear finish

Unexposed and Concealed Ends

- Basswood veneer with clear finish

Cabinet Base

- Separate applied veneer-core base
- Separate applied waterproof plywood base (additional cost)
- Cabinet end to floor (additional cost)

Base Cabinet Backs

(Exposed backs will match the veneer species and cut of the exposed cabinet ends.)

- Semi-exposed: White Hardboard**
- Semi-exposed: finished plywood with matching interior grade veneer
- Unexposed (drawer units): White Hardboard

Wall and Tall Cabinet Backs

(Exposed backs will match the veneer species and cut of the exposed cabinet ends.)

- Semi-exposed: White Hardboard**
- Semi-exposed: finished plywood with matching interior grade veneer

Door and Drawer Front Overlay

(Reveals between doors and drawer fronts on the face of the same cabinet will always be 1/8". Two adjacent cabinets will have double the reveal when install side by side.)

- Full Flush Overlay (1/16" reveal on cabinet end)**

Grain Direction on Doors and Drawer Fronts

- Vertically matched grain per cabinet

Exposed Cabinet Edge banding

- 1/8" (3mm) rolled type hardwood banding

Semi-exposed Cabinet Edge banding

- 1/8" (3mm) Wood-grain PVC edge banding

Base Cabinet Shelves

(Wall and tall cabinet shelves default will be full depth)

- 3/4 depth shelves (open base cabinet shelves will default to full depth)

Drawer Box Construction

- Fully dovetailed, 9 ply Baltic Birch, with 1/4" white TFM on MDF core bottoms
- Fully dovetailed, 9 ply Baltic Birch, with 1/2" – 9 ply Baltic Birch plywood bottoms

Drawer Slides for Standard Drawers

- Full extension, ball bearing, zinc, 100 lb. (DS100)

Drawer Slides for File Drawers

- Full extension, ball bearing, zinc, 150 lb. (DS150)

Hinges

- Heavy duty, five knuckle – brushed chrome (HH040)
- Heavy duty, five knuckle – stainless steel (HH010)

Door Catches

- Metal roller catch (RC010)

Pulls

- 96mm wire pull – brushed chrome (DP050)
- 96mm wire pull – stainless steel (DP190)

Shelf Supports

- Plastic, seismic type (SC240)

Lock Locations

- None
- Where indicated or specified
- File drawers only
- All drawers
- All doors
- All doors and drawers

Lock Type

- 5 disc cam lock (LK010)

Keying for Locks

- Keyed alike
- Keyed alike per room
- Keyed differently (Security panels will be provided between drawers)

Tall Door Locks

(Where indicated or specified)

- Same as other locks
- 3-point locking handle (LK050)

Padlock Hasps

(Where indicated or specified)

- Cam-type padlock-able hasp, Olympus DCN (PH010)

Glass for Glazed Doors

- Tempered
- Laminated Safety

Label Holders (optional)

- File drawer only
- All drawers (including file drawers)
- All drawers and doors (double doors will receive one)

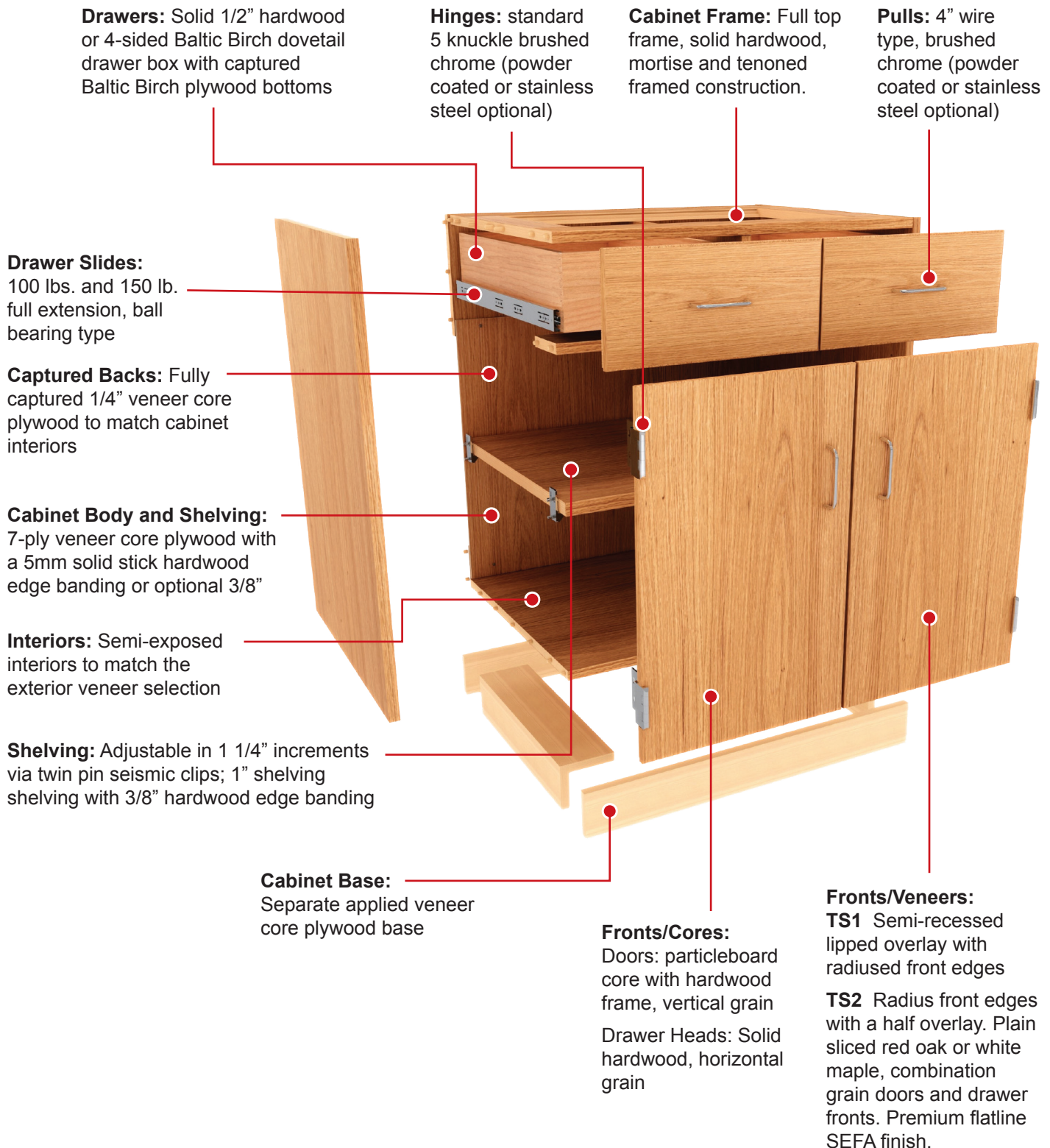
Number Plate Locations

(Shipped loose for field installation)

- None
- Where indicated or specified
- File drawers only
- All drawers
- All doors (double doors will receive one)
- All doors and drawers (double doors will receive one)
- Where there are Padlock hasps

Traditional Wood Series 1 and 2

Traditional Design and Construction....casework built to last



Traditional Wood Series 1 and 2 Casework Options Menu

(Options in Bold are standard)

Base Cabinet Construction

- Full Stretcher Frame
- Full Top Frame

Intermediate Rails

(Intermediate rails always provided when locks are specified)

- Between drawers and between drawers over doors

Cabinet Veneer Species and Cut

- Red Oak – Plain Sliced
- White Maple – Plain Sliced

Green Options

(Options listed can help to contribute to specific LEED points, however the total project requirements must be met in order to achieve the desired LEED points. 100% Recycled and recovered content only applies to PC and MDF.)

- None
- NAUF
- FSC
- NAUF/FSC
- 100% Recycled and Recovered Content
- 100% Recycled and Recovered Content, NAUF
- 100% Recycled and Recovered Content, FSC
- 100% Recycled and Recovered Content, NAUF/FSC

Cabinet Body Substrate

- Veneer Core

Door Substrate

- Particleboard core with hardwood frame

Drawer Heads

- Solid hardwood

Unexposed and Concealed Ends

- Hardwood veneer with sealer
- Same species and finish as exposed

Cabinet Base

- Separate applied veneer-core base
- Separate applied waterproof plywood base (additional cost)
- Cabinet end to floor (additional cost)

Base Cabinet Backs

(Exposed backs will match the veneer species and cut of the exposed cabinet ends.)

- Semi-exposed: White Hardboard
- Semi-exposed: finished plywood with matching interior grade veneer
- Unexposed (drawer units): White Hardboard

Wall and Tall Cabinet Backs

(Exposed backs will match the veneer species and cut of the exposed cabinet ends.)

- Semi-exposed: White Hardboard
- Semi-exposed: finished plywood with matching interior grade veneer

Door and Drawer Front Edge Treatment

(Fronts are always reveal overlay.)

- Style 1 – Lipped overlay with radiused front edges and rabbeted rear edges. The fronts are semi-recessed into face of cabinet
- Style 2 – Radiused front edges only. The fronts half-overlay the face of the cabinet

Grain Direction on Doors and Drawer Fronts

- Combination grain (vertical on doors, horizontal on drawer fronts)

Cabinet Edge banding

- 1/8" (3mm) rolled type banding
- 5mm solid stick banding
- 3/8" solid stick banding

Shelf Thickness

- All shelves 1" thick regardless of cabinet width

Base Cabinet Shelf Depth

(Wall and tall cabinet shelves default will be full depth.)

- Full depth shelves

Drawer Box Construction

- Fully dovetailed, 9 ply Baltic Birch, with 1/4" white TFM on MDF core bottoms
- Fully dovetailed, 9 ply Baltic Birch, with 1/2" – 9 ply Baltic Birch plywood bottoms
- Fully dovetailed, solid 1/2" hardwood, 9-ply Baltic Birch plywood bottoms

Drawer Slides for Standard Drawers

- Full extension, ball bearing, zinc, 100 lb. (DS100)
- Full extension, ball bearing, zinc, 150 lb. (DS150)

Drawer Slides for File Drawers

- Full extension, ball bearing, zinc, 150 lb. (DS150)

Hinges (for lipped-overlay)

- Heavy duty, five knuckle – brushed chrome (HH140)
- Heavy duty, five knuckle – stainless steel (HH110)

Door Catches

- Metal roller catch (RC010)

Pulls

- 96mm wire pull – brushed chrome (DP050)
- 96mm wire pull – stainless steel (DP190)

Shelf Supports

- Plastic, seismic type (SC240)

Lock Locations

- None
- Where indicated or specified
- File drawers only
- All drawers
- All doors
- All doors and drawers

Lock Type

- 5 disc cam lock (LK010)

Keying for Locks

- Keyed alike
- Keyed alike per room
- Keyed differently (Security panels will be provided between drawers)

Tall Door Locks

(Where indicated or specified)

- Same as other locks
- 3-point locking handle (LK050)

Padlock Hasps

(Where indicated or specified)

- Cam-type padlock-able hasp, Olympus DCN (PH010)
- Padlock loop and guard plate (PH020)

Glass for Glazed Doors

- Tempered
- Laminated Safety

Label Holders

- None
- File drawer only
- All drawers (including file drawers)
- All drawers and doors (double doors will receive one)

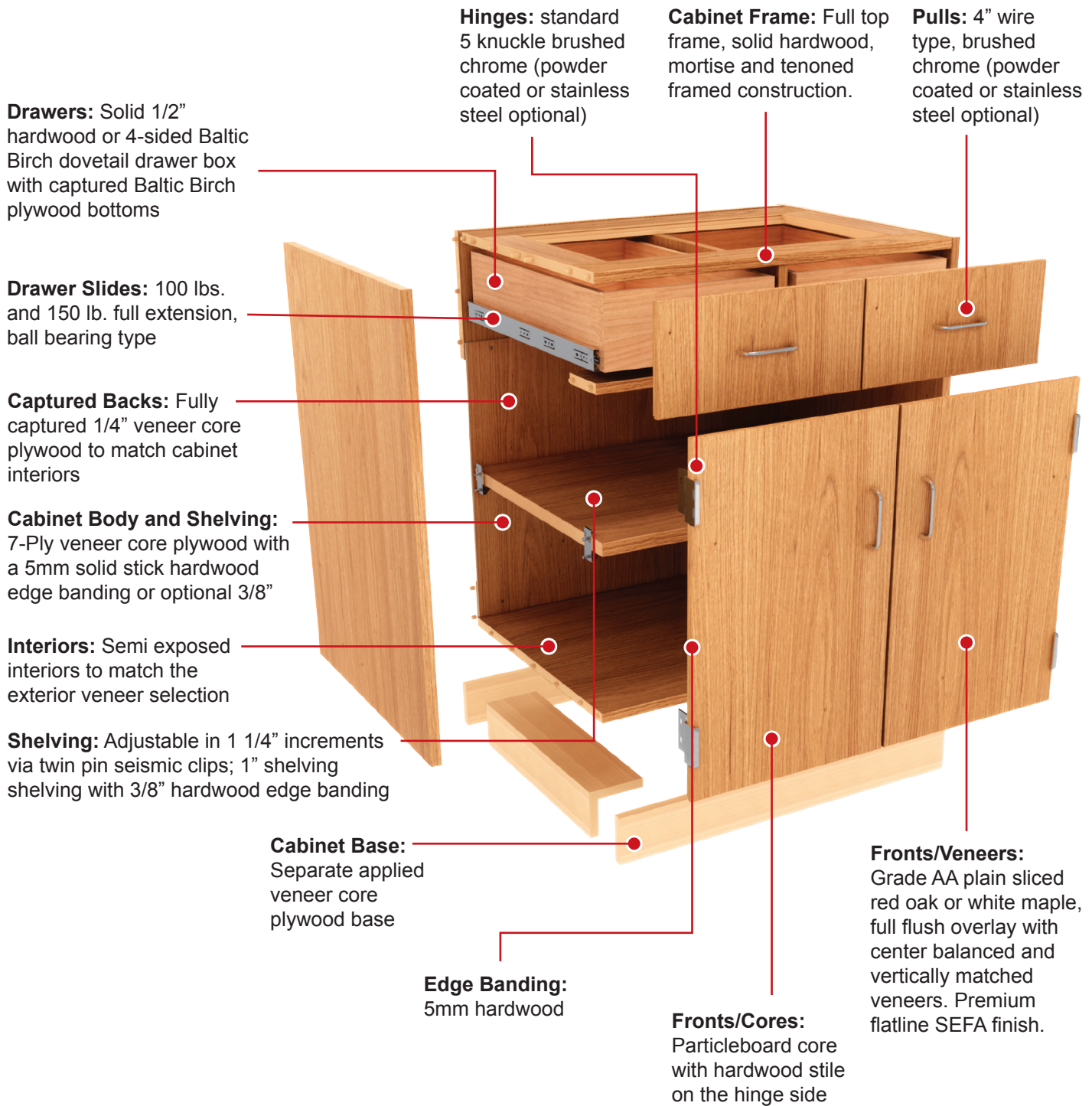
Number Plate Locations

(Shipped loose for field installation)

- None
- Where indicated or specified
- File drawers only
- All drawers
- All doors (double doors will receive one)
- All doors and drawers (double doors will receive one)
- Where there are Padlock hasps

Traditional Wood Series 3

Traditional Design and Construction....casework built to last



Traditional Wood Series 3 Casework

Options Menu

(Options in Bold are standard)

Base Cabinet Construction

- Full Stretcher Frame
- Full Top Frame**

Intermediate Rails

(Intermediate rails always provided when locks are specified)

- Between drawers and between drawers over doors

Cabinet Veneer Species and Cut

(not including fronts)

- Red Oak – Plain Sliced
- White Maple – Plain Sliced

Veneer Species and Cut for Fronts

- Red Oak – Plain Sliced, slip matched
- White Oak – Plain Sliced, slip matched

Green Options

(Options listed can help to contribute to specific LEED points, however the total project requirements must be met in order to achieve the desired LEED points. 100% Recycled and recovered content only applies to PC and MDF).

- None**
- NAUF
- FSC
- NAUF/FSC
- 100% Recycled and Recovered Content
- 100% Recycled and Recovered Content, NAUF
- 100% Recycled and Recovered Content, FSC
- 100% Recycled and Recovered Content, NAUF/FSC

Cabinet Body Substrate

- Veneer Core**

Door Substrate

- Particleboard core with hardwood stile on hinged edge**

Drawer Heads

- Particle-core plywood**

Unexposed and Concealed Ends

- Hardwood veneer with sealer**
- Same species and finish as exposed

Cabinet Base

- Separate applied veneer-core base**
- Separate applied waterproof plywood base (additional cost)
- Cabinet end to floor (additional cost)

Base Cabinet Backs

(Exposed backs will match the veneer species and cut of the exposed cabinet ends.)

- Semi-exposed: White Hardboard**
- Semi-exposed: Finished plywood with matching interior grade veneer
- Unexposed (drawer units): White Hardboard

Wall and Tall Cabinet Backs

(Exposed backs will match the veneer species and cut of the exposed cabinet ends.)

- Semi-exposed: White Hardboard**
- Semi-exposed: Finished plywood with matching interior grade veneer

Door and Drawer Front Edges

(Fronts are always flush overlay.)

- 1/8" (3mm) rolled type banding
- 5mm solid stick banding**

Grain Direction on Doors and Drawer Fronts

- Vertically-matched and center-balance matched per cabinet face**

Cabinet Edge Banding

- 1/8" (3mm) rolled type banding
- 5mm solid stick banding**
- 3/8" solid stick banding

Shelf Thickness

- All shelves 1" thick regardless of cabinet width**

Base Cabinet Shelf Depth

(Wall and tall cabinet shelves default will be full depth.)

- Full depth shelves**

Drawer Box Construction

- Fully dovetailed, 9 ply Baltic Birch, with ¼" white TFM on MDF core bottoms**
- Fully dovetailed, 9 ply Baltic Birch, with ½" – 9-ply Baltic Birch plywood bottoms
- Fully dovetailed, solid ½" hardwood, 9-ply Baltic Birch plywood bottoms

Drawer Slides for Standard Drawers

- Full extension, ball bearing, zinc, 100 lb. (DS100)**
- Full extension, ball bearing, zinc, 150 lb. (DS150)

Drawer Slides for File Drawers

- Full extension, ball bearing, zinc, 150 lb. (DS150)**

Hinges

- Heavy duty, five knuckle – brushed chrome (HH040)**
- Heavy duty, five knuckle – stainless steel (HH010)

Door Catches

- Metal roller catch (RC010)**

Pulls

- 96mm wire pull – brushed chrome (DP050)**
- 96mm wire pull – stainless steel (DP190)

Shelf Supports

- Plastic, seismic type (SC240)**

Lock Locations

- None**
- Where indicated or specified
- File drawers only
- All drawers
- All doors
- All doors and drawers

Lock Type

- 5 disc cam lock (LK010)**

Keying for Locks

- Keyed alike
- Keyed alike per room
- Keyed differently (Security panels will be provided between drawers)

Tall Door Locks

(Where indicated or specified)

- Same as other locks**
- 3-point locking handle (LK050)

Padlock Hasps

(Where indicated or specified)

- Cam-type padlock-able hasp, Olympus DCN (PH010)**
- Padlock loop and guard plate (PH020)

Glass for Glazed Doors

- Tempered**
- Laminated Safety

Label Holders

- None**
- File drawer only
- All drawers (including file drawers)
- All drawers and doors (double doors will receive one)

Number Plate Locations

(Shipped loose for field installation)

- None**
- Where indicated or specified
- File drawers only
- All drawers
- All doors (double doors will receive one)
- All doors and drawers (double doors will receive one)
- Where there are Padlock hasps

M-Line (Painted MDF Casework)

Contemporary Style Casework with Optional Premium Wood Faces

Drawers: 4-sided Baltic Birch dovetail drawer box with captured bottoms and applied fronts

Hinges: 5 knuckle brushed chrome (see options menu for additional choices)

Cabinet Frame: Stretcher frame or optional full sub top: 3/4" thick MDF

Pulls: 4" wire type, brushed chrome (see options menu for additional choices)

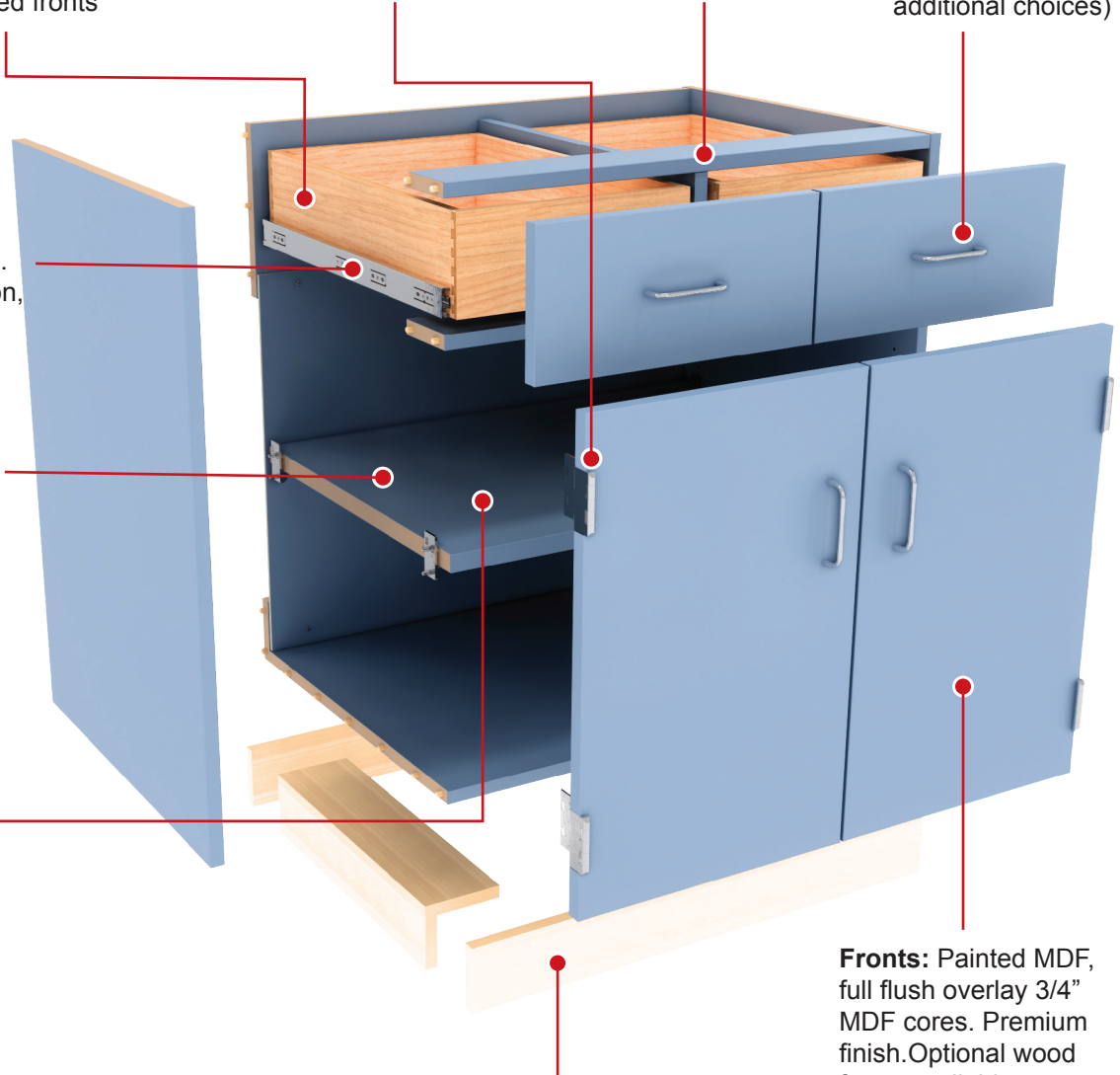
Drawer Slides: 100 lbs. and 150 lb. full extension, ball bearing type (see options menu for additional choices)

Shelving: Adjustable in 1 1/4" increments via twin pin seismic clips; 3/4" shelving 36" wide or less, 1" shelving greater than 36"

Cabinet Body and Shelving: 3/4" MDF

Cabinet Base: Separate applied veneer core plywood base

Fronts: Painted MDF, full flush overlay 3/4" MDF cores. Premium finish. Optional wood faces available.



M-Line Series Casework Options Menu

(Options in Bold are standard)

Cabinet Construction

- Full Stretcher Frame
- Full Sub Top

Intermediate Rails

(Intermediate rails will be provided when locks are specified)

- None**
- Between drawers and between drawers over doors

Doors and Drawer Fronts

The standard is MDF panel doors and drawer fronts, optional wood doors and drawer fronts are listed.

- MDF (plain, no veneer) with applied finish**
- Red Oak - Plain Sliced
- Red Oak - Rift Cut
- White Oak - Plain Sliced
- White Oak - Rift Cut
- White Maple - Plain Sliced
- White Maple - Quarter Cut
- White Birch - Rotary Cut
- European Steamed Beech - Plain Sliced
- Natural Bamboo (Edge Grain)
- Caramelized Bamboo (Edge Grain)
- Straight-grain (rift-like) reconstituted veneer
- Other species and cuts are available upon request

Green Options

(Options listed can help to contribute to specific LEED points, however the total project requirements must be met in order to achieve the desired LEED points. 100% Recycled and recovered content only applies to PC and MDF)

- None**
- NAUF
- FSC
- NAUF/FSC
- 100% Recycled and Recovered Content
- 100% Recycled and Recovered Content, NAUF
- 100% Recycled and Recovered Content, FSC

Cabinet Body Substrate

- MDF Core
- Water-resistant MDF (MR-50)

Door and Drawer Substrate

(CiF does not recommend using Veneer Core as a substrate for doors and drawer fronts.)

- MDF Core**
- Particleboard Core

Treatment of Unexposed and Concealed Ends

- MDF with sealer**
- MDF with finish

Cabinet Base

- Separate applied veneer-core base**
- Separate applied waterproof plywood base (additional cost)

Base Cabinet Backs

(Exposed backs will match the finish of the exposed cabinet ends.)

- Semi-exposed: White Hardboard**
- Unexposed (drawer units): no backs**
- Unexposed (drawer units): White Hardboard

Wall and Tall Cabinet Backs

(Exposed backs will match the finish of the exposed cabinet ends.)

- Semi-exposed: White Hardboard**

Door and Drawer Front Overlay

(Reveals between doors and drawer fronts on the face of the same cabinet will always be 1/8". Two adjacent cabinets will have double the reveal when installed side by side.)

- Reveal Overlay (3/8" reveal on cabinet end)
- Full Flush Overlay (1/16" reveal on cabinet end)**

Grain Direction on Doors and Drawer Fronts

(If applicable)

- Combination grain (horizontal on drawer fronts and vertical on doors)
- Vertically matched grain (vertical on drawer fronts and doors, available with reveal overlay and flush overlay).**

Edgebanding for Wood Fronts Only

- 1/8" rolled type banding
- 5mm solid stick banding**

Base Cabinet Shelves

(Wall and tall cabinet shelves default will be full depth.)

- 3/4 depth shelves (open base cabinet shelves will default to full depth)
- Full depth shelves**

Drawer Box Construction

- Fully dovetailed, 9 ply Baltic Birch, with 1/4" white TFM on MDF core bottoms**
- Fully dovetailed, 9 ply Baltic Birch, with 1/2" – 9 ply Baltic Birch plywood bottoms

Drawer Slides for Standard Drawers

- Full extension, ball bearing, zinc, 100 lb. (DS100)**
- Full extension, ball bearing, zinc, 150 lb. (DS150)
- Soft closing, full extension, ball bearing, zinc, 100 lb. (DS300).
 - Not recommended for drawers over 24" wide
- Soft closing, full extension, ball bearing, zinc, 150 lb. (DS170)
 - Can be used on any drawer but recommended for drawers over 24" wide
- Other, specify

Drawer Slides for File Drawers

- Full extension, ball bearing, zinc, 100 lb. (DS100)
- Full extension, ball bearing, zinc, 150 lb. (DS150)**
- Soft closing, full extension, ball bearing, zinc, 150 lb. (DS170)
- Other, specify

Hinges

(Five knuckle hinges will require a door catch. Both three knuckle and concealed hinges have a self-closing mechanism.)

- Heavy duty, five knuckle – painted (HH020)
- Heavy duty, five knuckle – brushed chrome (HH040)**
- Heavy duty, five knuckle – stainless steel (HH010)
- Medium duty, concealed, 170 open – nickel plated (HH050)
- Medium duty, concealed, 110 open – nickel plated (HH060)
- Medium duty, three knuckle, 270 open – nickel plated (HH080)
- Other, specify

Door Catches

- Metal roller catch (RC010)**
- Magnetic catch (MC010)

Pulls

- 96mm wire pull – brushed chrome (DP050)**
- 96mm wire pull – bright chrome (DP060)
- 96mm wire pull – stainless steel (DP190)
- 96mm wire pull – painted (DP170)
- 4" cast pull – aluminum with flared ends (DP070)
- Metal flush pull, black (DP120)
- 4" D pull, aluminum (DP040)
- Semi-recessed pull, nickel (DP100)
- Oversized semi-recessed pull (DP110)
- Other, specify

Shelf Supports

- Angled Steel Pin (SC220)
- Plastic, seismic type (SC240)**

Lock Locations

- None**
- Where indicated or specified
- File drawers only
- All drawers
- All doors
- All doors and drawers

Lock Type

- 5 disc cam lock (LK010)**
- 5 pin cam lock (LK030)
- 5 pin dead bolt lock (LK040)
- Other, specify

Keying for Locks

- Keyed alike
- Keyed alike per room
- Keyed differently (Security panels will be provided between drawers)

Tall Door Locks

(Where indicated or specified)

- Same as other locks**
- 3-point locking handle (LK050)
- Other, specify

Padlock Hasps

(Where indicated or specified)

- Cam-type padlock-able hasp, Olympus DCN (PH010)**
- Padlock loop and guard plate (PH020)

Glass for Glazed Doors

- Tempered**
- Laminated Safety

Label Holders

- None**
- File drawer only
- All drawers (including file drawers)
- All drawers and doors (double doors will receive one)

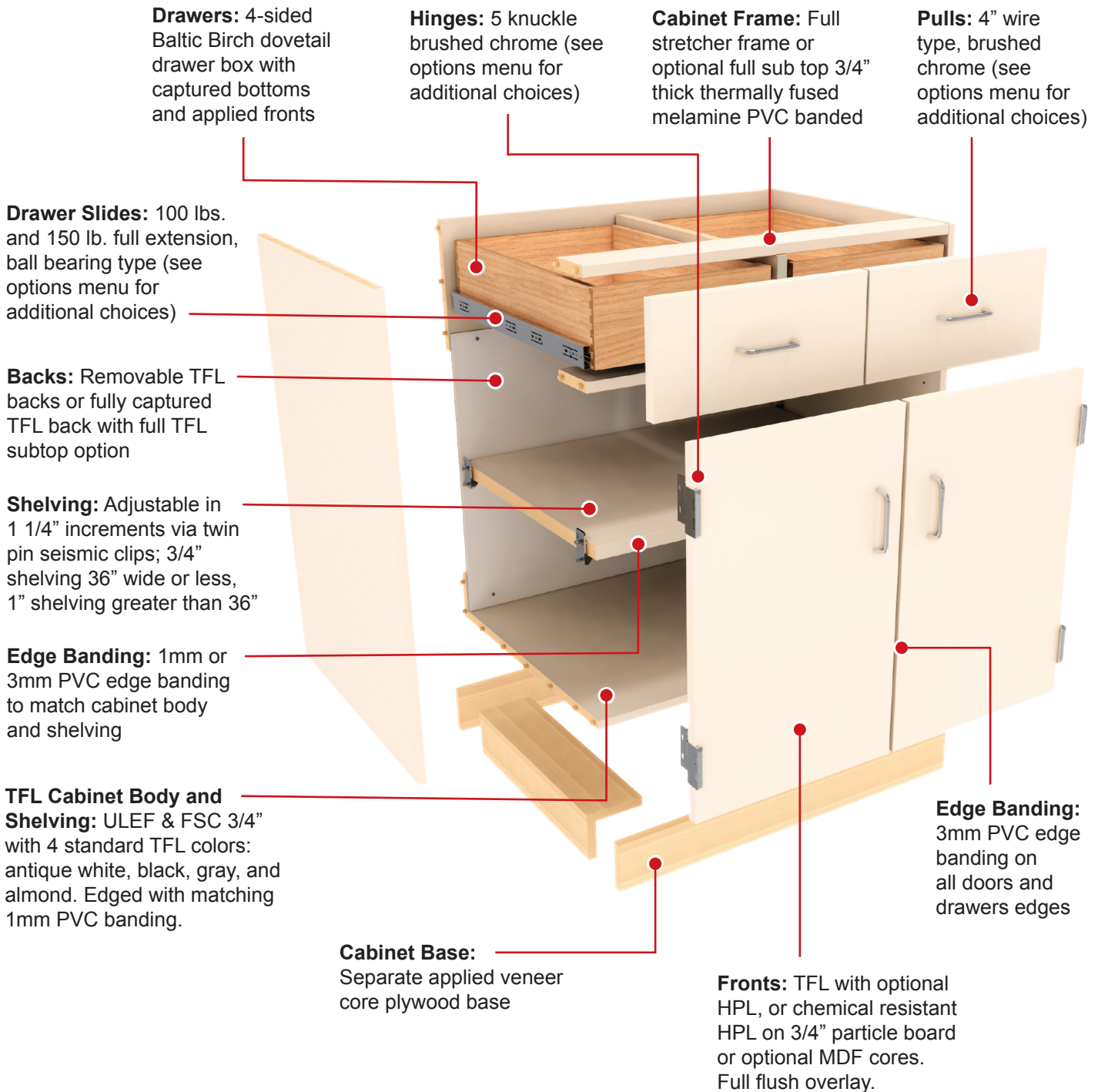
Number Plate Locations

(Shipped loose for field installation)

- None**
- Where indicated or specified
- File drawers only
- All drawers
- All doors (double doors will receive one)
- All doors and drawers (double doors will receive one)
- Where there are Padlock hasps

Q-Line Series

Premium Grade Plastic Laminate Casework



Q-Line Series Casework Options Menu

(Options in Bold are standard)

Base Cabinet Construction

- Full Stretcher Frame
- Full Sub Top

Intermediate Rails

(Intermediate rails always provided when locks are specified)

- None
- Between drawers and between drawers over doors

Green Features

- NAUF/FSC
- Post-industrial recycled content as possible

Cabinet Body Color (Low-pressure laminate (TFL) on particle core)

- Antique White**
- Gray
- Almond
- Black
- Other (choose color/pattern)

Exposed ends

- Low-pressure laminate (TFL), cabinet body color**
- Plastic laminate (choose color/pattern)
- Chemical resistant plastic laminate (choose color)

Cabinet Body Substrate

- Particleboard Core

Front Material

- Low-pressure laminate (TFL), cabinet body color on particle core only**
- Plastic laminate (choose color) (HPL)
- Chemical resistant plastic laminate (choose color)

Door and Drawer Substrate (except TFL)

- Particleboard Core
- MDF core

Cabinet Base

- Separate applied veneer-core base
- Separate applied waterproof plywood base (additional cost)

Semi-exposed Base Cabinet and Wall Cabinet Backs

- White Hardboard**
- Low-pressure laminate (TFL) to match case body, 1/2"

Unexposed Base Cabinet Backs (drawer units)

- No backs**
- White Hardboard

Semi-exposed Tall Cabinet Backs

- Low-pressure laminate (TFL) to match case body, 1/2"**

Exposed, Base, Wall and Tall Cabinet Backs

- Low-pressure laminate (TFL) to match case body, 1/2"**

Cabinet Edge banding

- 1mm PVC to match case body**
- 3mm PVC to match case body

Door and Drawer Front Overlay

(Reveals between doors and drawer fronts on the face of the same cabinet will always be 1/8". Two adjacent cabinets will have double the reveal when install side by side.)

- Full Flush Overlay (1/16" reveal on cabinet end)**

Grain Direction on Doors and Drawer Fronts (if woodgrain)

- Vertically matched grain per cabinet**

Door and Drawer Front Edge Banding

- 3mm PVC to match case body**
- For Optional veneer doors only: 1/8" (3mm) rolled-type hardwood

Base Cabinet Shelves

(Wall and tall cabinet shelves default will be full depth.)

- 3/4 depth shelves (open base cabinet shelves will default to full depth)
- Full depth shelves**

Drawer Box Construction

- Fully dovetailed, 9 ply Baltic Birch, with 1/4" white TFL on MDF core bottoms**
- Fully dovetailed, 9 ply Baltic Birch, with 1/2" – 9 ply Baltic Birch plywood bottoms

Drawer Slides for Standard Drawers

- Full extension, ball bearing, zinc, 100 lb. (DS100)**
- Full extension, ball bearing, zinc, 150 lb. (DS150)
- Soft closing, full extension, ball bearing, zinc, 100 lb. (DS300).
 - Not recommended for drawers over 24" wide
- Soft closing, full extension, ball bearing, zinc, 150 lb. (DS170)
 - Can be used on any drawer but recommended for drawers over 24" wide
- Other, specify

Drawer Slides for File Drawers

- Full extension, ball bearing, zinc, 100 lb. (DS100)
- Full extension, ball bearing, zinc, 150 lb. (DS150)**
- Soft closing, full extension, ball bearing, zinc, 150 lb. (DS170)
- Other, specify

Hinges

(Five knuckle hinges will require a door catch. Both three knuckle and concealed hinges have a self-closing mechanism.)

- Heavy duty, five knuckle – painted (HH020)
- Heavy duty, five knuckle – brushed chrome (HH040)**
- Heavy duty, five knuckle – stainless steel (HH010)
- Medium duty, concealed, 170 open – nickel plated (HH050)
- Medium duty, concealed, 110 open – nickel plated (HH060)
- Medium duty, three knuckle, 270 open – nickel plated (HH080)
- Other, specify

Door Catches

- Metal roller catch (RC010)**
- Magnetic catch (MC010)

Pulls

- 96mm wire pull – brushed chrome (DP050)**
- 96mm wire pull – bright chrome (DP060)
- 96mm wire pull – stainless steel (DP190)
- 96mm wire pull – painted (DP170)
- 4" cast pull – aluminum with flared ends (DP070)
- Metal flush pull, black (DP120)
- 4" D pull, aluminum (DP040)
- Semi-recessed pull, nickel (DP100)
- Oversized semi-recessed pull (DP110)
- Other, specify

Shelf Supports

- Angled Steel Pin (SC220)
- Plastic, seismic type (SC240)**

Lock Locations

- None**
- Where indicated or specified
- File drawers only
- All drawers
- All doors
- All doors and drawers

Lock Type

- 5 disc cam lock (LK010)**
- 5 pin cam lock (LK030)
- 5 pin dead bolt lock (LK040)
- Other, specify

Keying for Locks

- Keyed alike
- Keyed alike per room
- Keyed differently (Security panels will be provided between drawers)

Tall Door Locks

(Where indicated or specified)

- Same as other locks**
- 3-point locking handle (LK050)
- Other, specify

Padlock Hasps

(Where indicated or specified)

- Cam-type padlock-able hasp, Olympus DCN (PH010)**
- Padlock loop and guard plate (PH020)

Glass for Glazed Doors

- Tempered**
- Laminated Safety

Label Holders (optional)

- File drawer only
- All drawers (including file drawers)
- All drawers and doors (double doors will receive one)

Number Plate Locations

(Shipped loose for field installation)

- None**
- Where indicated or specified
- File drawers only
- All drawers
- All doors (double doors will receive one)
- All doors and drawers (double doors will receive one)
- Where there are Padlock hasps